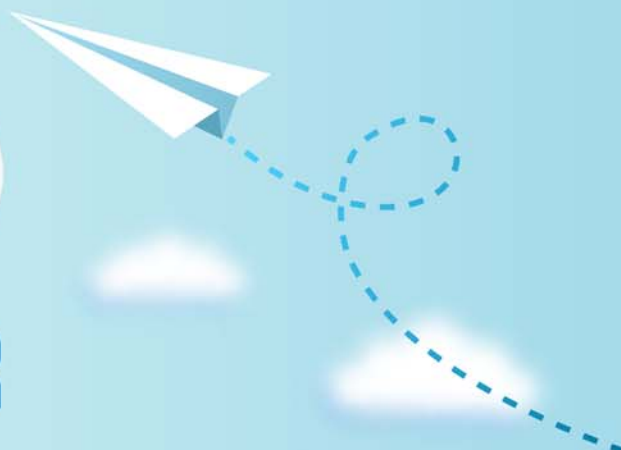


CERTPARK

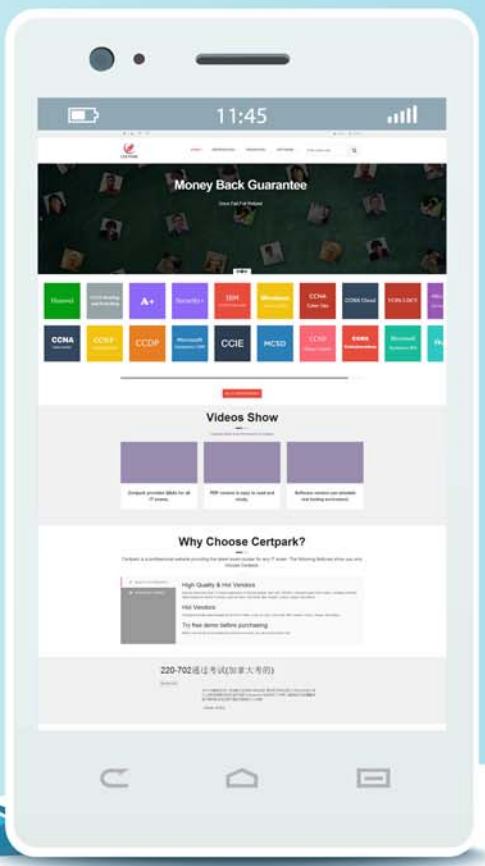


QUESTION & ANSWER



CERTPARK.COM

Accurate Study Guides,
High Passing Rate!
provides update
free of charge
in one year!



Exam : **050-v5x-CAARCHER01**

Title : RSA Archer Certified
Administrator 5.x Exam

Version : DEMO

1. Topic 1, System Integration and Configuration Management

What type of file is created when an administrator downloads an RSA Archer package?

- A. CSV
- B. TXT
- C. XML
- D. ZIP

Answer: D

2.Which of the following is FALSE about calculations?

- A. Users are able to write calculations as part of an advanced search.
- B. Calculations can be added to Text, Values List, Date, and Numeric fields only.
- C. Field data can be calculated by the Data Feed Manager prior to being brought into Archer.
- D. The order of calculated fields can be configured from the Calculations tab within Manage Applications.

Answer: A

3.When an end user rejects a record in the first stage of a workflow process, who will be responsible for reviewing the record?

- A. The application owner
- B. No one; the record will be deleted
- C. The person that created the record
- D. It is not possible to reject a record in the first stage

Answer: D

4.When an administrator selects the "As Needed" option for a Calculated Field, how is the calculation impacted?

- A. The field will be calculated only when the record is initially created.
- B. The field will be calculated only when there is a scheduled calculation.
- C. The field will be calculated every time a user clicks "Save" or when there is a scheduled calculation.
- D. The system will analyze the fields referenced by the calculation and determine when the field should be calculated.

Answer: D

5.What happens when you select the Round Robin option for a workflow stage?

- A. A record is randomly assigned to qualified users.
- B. A record is assigned to the user with the smallest workflow queue.
- C. A record is assigned to the user with the most expertise on that topic.
- D. A record is assigned to the user with the highest level of access for that application.

Answer: A