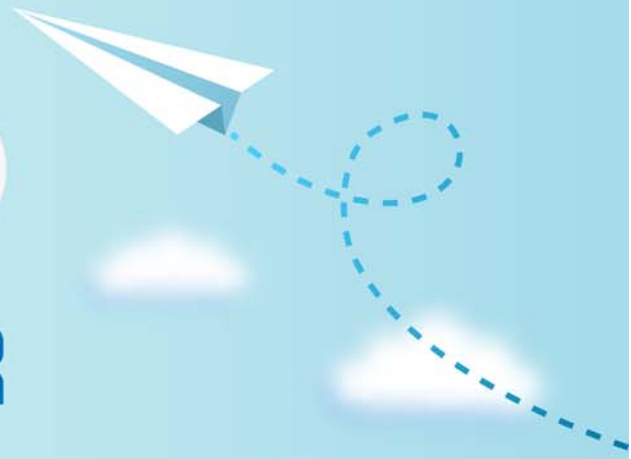


CERTPARK



QUESTION & ANSWER



CERTPARK.COM

Accurate Study Guides,
High Passing Rate!
provides update
free of charge
in one year!



Exam : **070-765**

Title : Provisioning SQL
Databases

Version : DEMO

1. Topic 1, Implementing SQL in Azure

Note: This question is part of a series of questions that present the same scenario. Each question in the series contains a unique solution. Determine whether the solution meets stated goals.

Your company plans to use Microsoft Azure Resource Manager templates for all future deployments of SQL Server on Azure virtual machines.

You need to create the templates.

Solution: You use Visual Studio to create a XAML template that defines the deployment and configuration settings for the SQL Server environment.

Does the solution meet the goal?

A. Yes

B. No

Answer: B

Explanation:

Azure Resource Manager template consists of JSON, not XAML, and expressions that you can use to construct values for your deployment.

A good JSON editor can simplify the task of creating templates.

Note: In its simplest structure, an Azure Resource Manager template contains the following elements:

```
{
"$schema": "http://schema.management.azure.com/schemas/2015-01-01/deploymentTemplate.json#",
"contentVersion": "",
"parameters": {},
"variables": {},
"resources": [],
"outputs": {}
}
```

References: <https://docs.microsoft.com/en-us/azure/azure-resource-manager/resource-group-authoring-templates>

2. Note: This question is part of a series of questions that present the same scenario. Each question in the series contains a unique solution. Determine whether the solution meets stated goals.

Your company plans to use Microsoft Azure Resource Manager templates for all future deployments of SQL Server on Azure virtual machines.

You need to create the templates.

Solution: You create the desired SQL Server configuration in an Azure Resource Group, then export the Resource Group template and save it to the Templates Library.

Does the solution meet the goal?

A. Yes

B. No

Answer: B

Explanation:

Azure Resource Manager template consists of JSON, and expressions that you can use to construct values for your deployment.

A good JSON editor, not a Resource Group template, can simplify the task of creating templates.

Note: In its simplest structure, a Azure Resource Manager template contains the following elements:

```
{
"$schema": "http://schema.management.azure.com/schemas/2015-01-01/deploymentTemplate.json#",
"contentVersion": "",
"parameters": {},
"variables": {},
"resources": [],
"outputs": {}
}
```

References:<https://docs.microsoft.com/en-us/azure/azure-resource-manager/resource-group-authoring-templates>

3.Note: This question is part of a series of questions that present the same scenario. Each question in the series contains a unique solution. Determine whether the solution meets stated goals.

Your company plans to use Microsoft Azure Resource Manager templates for all future deployments of SQL Server on Azure virtual machines.

You need to create the templates.

Solution: You use Visual Studio to create a JSON template that defines the deployment and configuration settings for the SQL Server environment.

Does the solution meet the goal?

A. Yes

B. No

Answer: A

Explanation:

Azure Resource Manager template consists of JSON, not XAML, and expressions that you can use to construct values for your deployment.

A good JSON editor can simplify the task of creating templates.

Note: In its simplest structure, an Azure Resource Manager template contains the following elements:

```
{
"$schema": "http://schema.management.azure.com/schemas/2015-01-01/deploymentTemplate.json#",
"contentVersion": "",
"parameters": {},
"variables": {},
"resources": [],
"outputs": {}
}
```

References:<https://docs.microsoft.com/en-us/azure/azure-resource-manager/resource-group-authoring-templates>

4.You have a Microsoft SQL Server 2014 named SRV2014 that has a single tempdb database file. The tempdb database file is eight gigabytes (GB) in size.

You install a SQL Server 2016 instance named SQL Server 2016 by using default settings. The new instance has eight logical processor cores.

You plan to migrate the databases from SRV2014 to SRV2016.

You need to configure the tempdb database on SRV2016. The solution must minimize the number of future tempdb autogrowth events.

What should you do?

- A. Increase the size of the tempdb datafile to 8 GB. In the tempdb database, set the value of the MAXDOP property to 8.
- B. Increase the size of the tempdb data files to 1 GB.
- C. Add seven additional tempdb data files. In the tempdb database, set the value of the MAXDOP property to 8.
- D. Set the value for the autogrowth setting for the tempdb data file to 128 megabytes (MB). Add seven additional tempdb data files and set the autogrowth value to 128 MB.

Answer: B

Explanation:

In an effort to simplify the tempdb configuration experience, SQL Server 2016 setup has been extended to configure various properties for tempdb for multi-processor environments.

1. A new tab dedicated to tempdb has been added to the Database Engine Configuration step of setup workflow.

2. Configuration options:

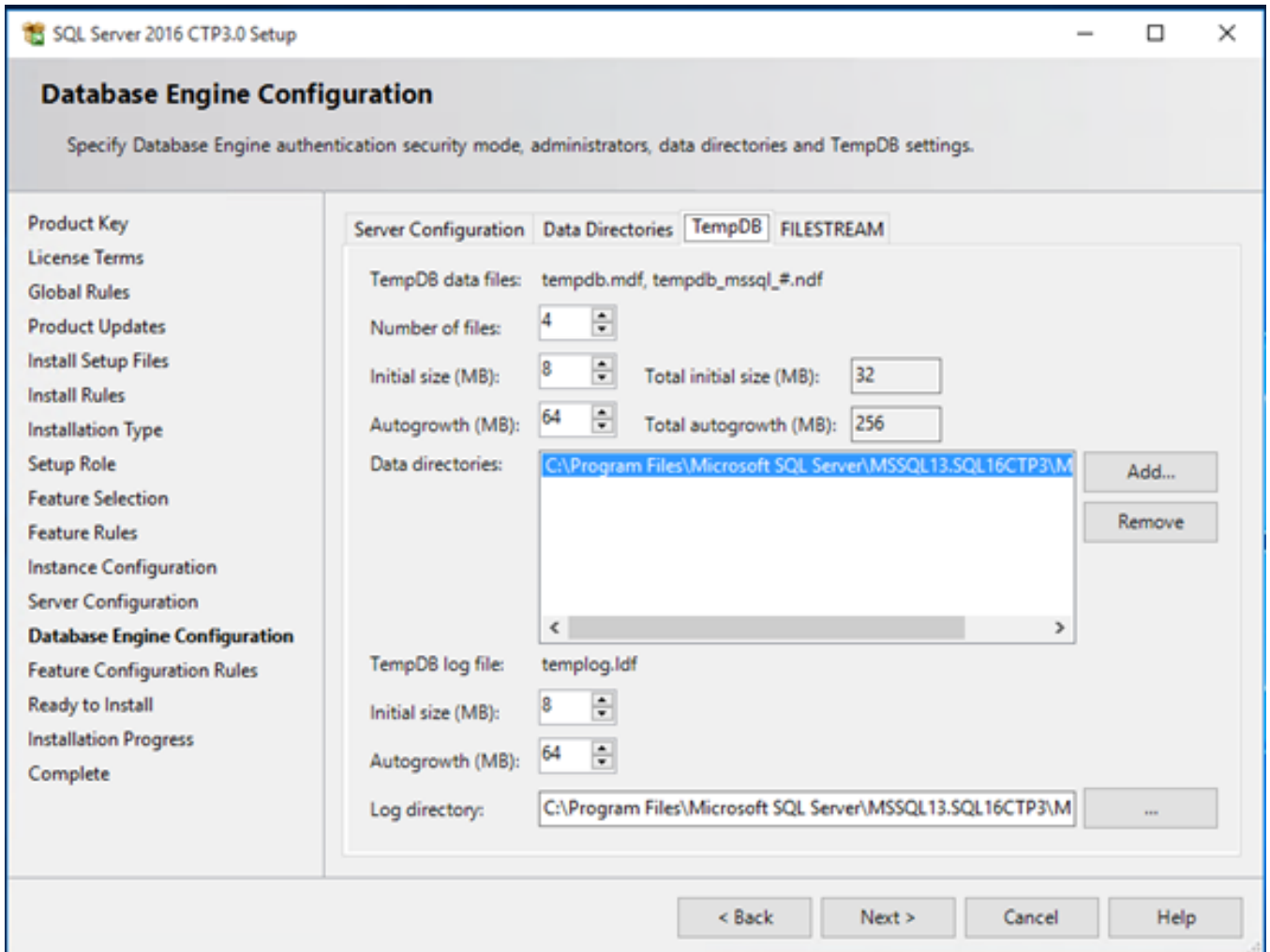
Data Files

* Number of files – this will default to the lower value of 8 or number of logical cores as detected by setup.

* Initial size – is specified in MB and applies to each tempdb data file. This makes it easier to configure all files of same size. Total initial size is the cumulative tempdb data file size (Number of files * Initial Size) that will be created.

* Autogrowth – is specified in MB (fixed growth is preferred as opposed to a non-linear percentage based growth) and applies to each file. The default value of 64MB was chosen to cover one PFS interval.

Figure:



References:<https://blogs.msdn.microsoft.com/psssql/2016/03/17/sql-2016-it-just-runs-faster-automatic-tempdb-configuration/>

5.Note: This question is part of a series of questions that use the same or similar answer choices. An answer choice may be correct for more than one question in the series. Each question is independent of the other questions in this series. Information and details provided in a question apply only to that question.

You have deployed several GS-series virtual machines (VMs) in Microsoft Azure. You plan to deploy Microsoft SQL Server in a development environment. Each VM has a dedicated disk for backups. You need to backup a database to the local disk on a VM. The backup must be replicated to another region.

Which storage option should you use?

- A. Premium P10 disk storage
- B. Premium P20 diskstorage
- C. Premium P30 disk storage
- D. Standard locally redundant disk storage
- E. Standard geo-redundant disk storage
- F. Standard zone redundant blob storage
- G. Standard locally redundant blob storage

H. Standard geo-redundant blob storage

Answer: E

Explanation:

Note: SQL Database automatically creates a database backups and uses Azure read-access geo-redundant storage (RA-GRS) to provide geo-redundancy. These backups are created automatically and at no additional charge. You don't need to do anything to make them happen. Database backups are an essential part of any business continuity and disaster recovery strategy because they protect your data from accidental corruption or deletion.

References:<https://docs.microsoft.com/en-us/azure/sql-database/sql-database-automated-backups>