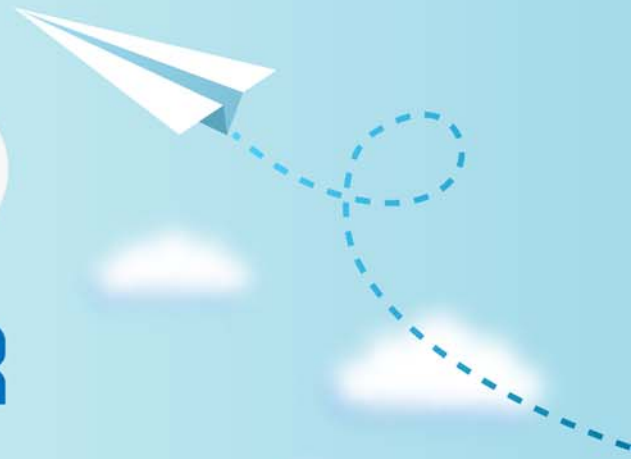


CERTPARK



QUESTION & ANSWER



CERTPARK.COM

Accurate Study Guides,
High Passing Rate!
provides update
free of charge
in one year!



<https://www.certpark.com>

Exam : **1V0-642**

Title : VMware Certified Associate
6 - Network Virtualization
6.2 Exam

Version : DEMO

1.A security policy is a collection of security services of firewall rules, or both. Which security service is applied to virtual machines to ensure data security?

- A. Virtual machine
- B. Guest Introspection
- C. Network Introspection
- D. SpoofGuard

Answer: B

2.Which NSX component enforces security rules between two virtual machines that are on the same Layer 2 segment?

- A. NSX Manager
- B. Distributed Router
- C. NSX distributed Firewall
- D. NSX Controller

Answer: C

3.How do virtual networks that are natively isolated from each other provide support for overlapping IP address in a multi-tenant environment?

- A. By enabling isolation without using access control lists and firewall rules.
- B. By enabling isolation with the help of Active Directory (AD).
- C. By employing the spanning tree protocol.
- D. By implementing load balancing.

Answer: A

4.An administrator has deployed Distributed Firewall to protect their infrastructure from security threats. Due to extreme loads on the network the CPU is saturated and the memory becomes full.

In this scenario, which mode does the Distributed Firewall enter?

- A. Secondary
- B. Fail open
- C. Proxy
- D. Fail close

Answer: B

5.An administrator is working in an IT infrastructure where traditional routing methods are followed for routing network traffic. What are the three challenges for an administrator in this infrastructure? (Choose three.)

- A. The use of East-West traffic is not secure within a data center.
- B. North-South routing methods limit data center scalability.
- C. The complexity of routing increases in a multi-tenant environment.
- D. A suboptimal traffic route is used to reach destination.
- E. Adding new servers to an isolated network became difficult.

Answer: A, B, E