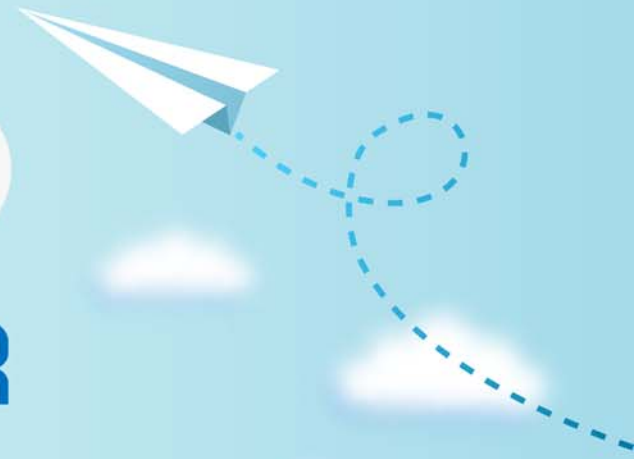


CERTPARK

QUESTION & ANSWER



CERTPARK.COM

Accurate Study Guides,
High Passing Rate!
provides update
free of charge
in one year!



Exam : **1V0-701**

Title : VMware Certified Associate
- Digital Business
Transformation Exam

Version : DEMO

1.Which is the main differentiator for VMware vSAN when compared to a Virtual Storage Appliance (VSA)?

- A. VMware vSAN is integrated into the ESXi Kernel.
- B. VMware vSAN can be implemented with external storage.
- C. VMware vSAN is implemented as virtual Appliance.
- D. A VSA is tightly integrated with VMkernel.

Answer: D

2.Which two statements about VMware Horizon View Administrator are true? (Choose two.)

- A. VM ware Horizon View Administrator can be installed on a vCenter Server that manages virtual machines.
- B. VMware Horizon View Administrator is installed with the Horizon View Connection Server.
- C. VMware Horizon View Administrator is a software service that acts as a broker for client connections.
- D. VMware Horizon View Administrator allows administrators to manage Horizon View Connection Server instances from anywhere without having to install an application on their local computers.

Answer: BD

Explanation:

Reference: <https://docs.vmware.com/en/VMware-Horizon-7/7.0/com.vmware.horizon-view.planning.doc/GUID-925916AD-5891-4DF8-B20C-C22A2B2B0528.html>

3.Which four application services are delivered by VMware Horizon 7? (Choose four.)

- A. Packaged apps with VMware ThinApp
- B. Virtualized apps from Citrix
- C. SaaS apps
- D. Helpdesk ticketing system
- E. RDS hosted apps
- F. Anti-virus services

Answer: ABCE

Explanation:

Reference: <https://www.vmware.com/techpapers/2014/application-delivery-options-in-vmware-horizon-10430.html>

4.Which feature of VMware vSphere will automate the process of migrating virtual machines to fewer hosts during times of low workloads?

- A. FT
- B. EVC
- C. DPM
- D. HA

Answer: C

Explanation:

Reference: <https://www.vmware.com/content/dam/digitalmarketing/vmware/en/pdf/techpaper/Distributed-Power-Management-vSphere.pdf> (p. 3)

5.Which two statements are true for vRealize Business for Cloud? (Choose two.)

- A. It provides costing for non-vSphere workload by directly integrating with them.
- B. It provides public cloud costing, consumption analysis, and pricing.
- C. It collects performance data through the agents that are deployed in the cloud workloads.
- D. It provides costing for native services hosted on AWS and Azure cloud.
- E. It provides Automatic private cloud metering, costing, and pricing.

Answer: BE

Explanation:

Reference: <https://www.vmware.com/products/vrealize-business-for-cloud.html>