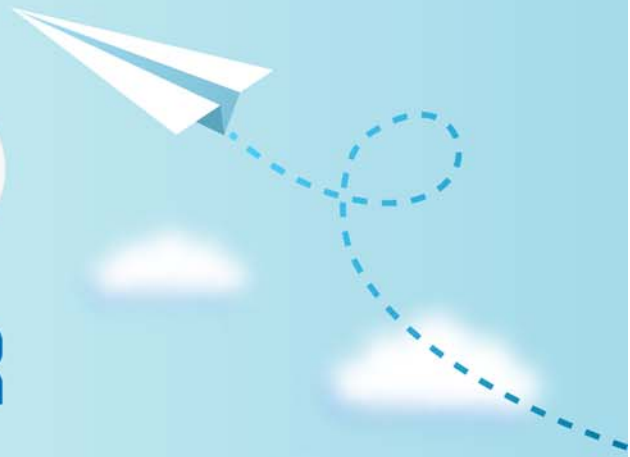


# CERTPARK



## QUESTION & ANSWER



CERTPARK.COM

Accurate Study Guides,  
High Passing Rate!  
provides update  
free of charge  
in one year!



<https://www.certpark.com>

**Exam : 200-601**

**Title : Managing Industrial  
Networking for  
Manufacturing with Cisco  
Technologies**

**Version : DEMO**

1.Which selection is a reason why IGMP snooping should be configured on a switched network?

- A. IGMP snooping populates the snooping table with the results of DHCP requests and can be used by Dynamic ARP Inspection to block IP spoofing attacks at Layer-2.
- B. IGMP snooping verifies the source IP address of every IPv4 packet to ensure that it hasn't been originated from a port different than its return path.
- C. IGMP snooping is used to filter ping requests and results to avoid overflowing the MAC address table of the switch.
- D. IGMP snooping allows a Layer-2 switch to limit the transmission of multicast frames to only the ports that have members of the relevant IGMP group.

**Answer: D**

2.What is the reason that ProfiNET frames are discarded by default on Catalyst switches?

- A. ProfiNET uses a nonstandard Ethernet frame format
- B. The frames have an 802.1q tag with VLAN ID equal to 0 (zero)
- C. Catalyst switches do not support ProfiNET traffic
- D. A ProfiNET VLAN must be configured and enabled on a Catalyst switch

**Answer: B**

3.What security component can be deployed to increase the defense in depth and specifically can be positioned against 'man-in-the-middle' attack?

- A. Deploy 802.1AE
- B. Deploy 802.1X
- C. Deploy 802.1Q
- D. Deploy 802.1AX

**Answer: A**

4.Given the CIA triad elements, which ensures first that the data is encrypted and secure, second that the data is trustworthy, and third that the data is accessible by those who need it?

- A. CIA
- B. ICA
- C. ACI
- D. CAI

**Answer: A**

5.To ensure ProfiNET Layer 2 Class-of-Service markings from ProfiNET devices are trusted by the switch, which command must be entered on the interface attached to the device?

- A. switch(config-if)#mls qos trust cos
- B. switch(config-if)#qos trust cos
- C. switch(config-if)#profinet cos trust
- D. switch(config-if)#trust qos cos

**Answer: A**