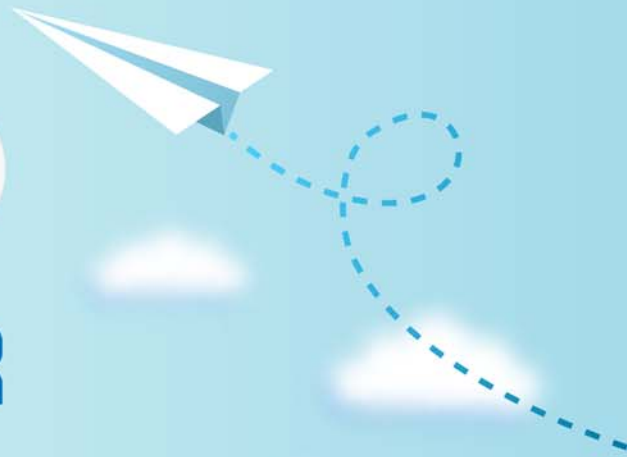


CERTPARK



QUESTION & ANSWER



CERTPARK.COM

Accurate Study Guides,
High Passing Rate!
provides update
free of charge
in one year!



<https://www.certpark.com>

Exam : **2V0-21.19**

Title : Professional vSphere 6.7
Exam 2019

Version : DEMO

1.An administrator is installing a Platform Services Controller instance.

Which two options are available during the installation process? (Choose two.)

- A. choose deployment size
- B. specify vSphere administrator credentials
- C. enable Enhanced Linked Mode
- D. create a vCenter Single sign-on domain
- E. join an existing domain

Answer: D,E

2.A vSphere Administrator has multiple virtual machines running on a VMFS datastore.

Which option prioritizes the disk access for the virtual machines?

- A. Disk Shares
- B. Disk Mode
- C. Disk Type
- D. Hard Disk

Answer: A

3.What should be installed on a VM to assist with VM-to-host time synchronization?

- A. VMware Tools
- B. vRA guest agent
- C. vROps agent
- D. Guest Operations Manager

Answer: A

4.An administrator runs a vSphere cluster containing database VMs with extremely heavy disk I/O.

Database VMs are placed on a costly all-flash array. The workloads are not memory intensive.

How can the administrator ensure the most cost-effective utilization of the all-flash storage array?

- A. Enable Storage I/O Control on the flash datastores.
- B. Install VMware Tools on the database VMs to ensure the hypervisor can receive I/O metrics.
- C. Use a VM-to-Host affinity rule to ensure database VMs are prioritized.
- D. Edit the cluster settings to place the virtual machine swap file on a different storage tier.

Answer: D

5.An administrator has an environment with these conditions and requirements:

How can the administrator meet the conditions and requirements?

- A. Adjust NIOC or SIOC as appropriate to give the QA department a higher compute priority within the cluster.
- B. Create a resource pool for each department and use the Shares attribute to prioritize the allocation of resources.
- C. Assign affinity or anti-affinity rules to the appropriate VMs for each department.
- D. Set the VM priority to high for QA department VMs and normal for Marketing department VMs.

Answer: B