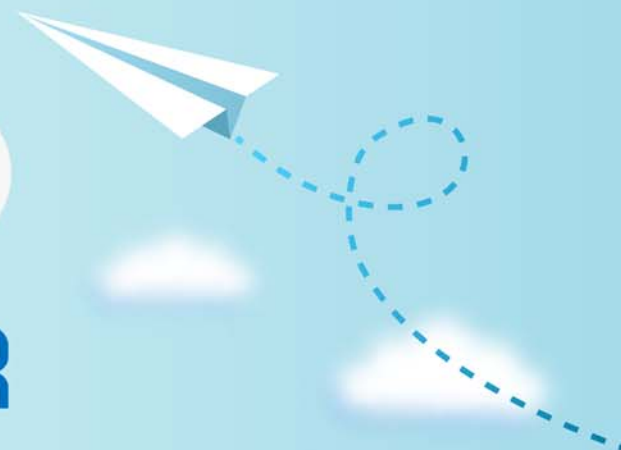


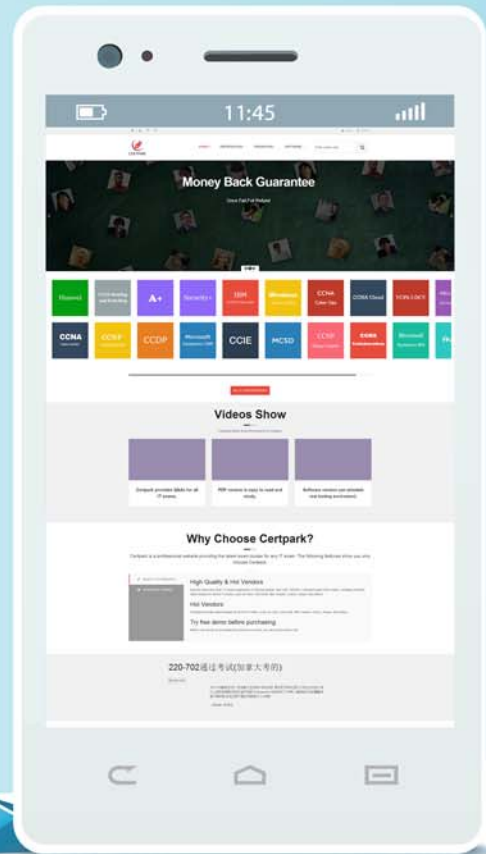
CERTPARK

QUESTION & ANSWER



CERTPARK.COM

Accurate Study Guides,
High Passing Rate!
provides update
free of charge
in one year!



Exam : 2V0-21.19PSE

**Title : Professional vSphere 6.7
Exam 2019**

Version : DEMO

1.Using vSphere HA Orchestrated Restart an administrator places the most mission critical VM in the highest priority. After a host failure, the highest priority VM fails to restart while VMs in high priority restart. What would cause this to occur?

- A. VMware Tools is not installed.
- B. Proactive HA is disabled.
- C. There are insufficient cluster resources.
- D. Performance degradation VMs tolerate threshold is at default.

Answer: A

2.Which two VMware solutions track and analyze the operation of multiple data sources? (Choose two.)

- A. vRealize Automation
- B. vRealize Operations Manager
- C. vRealize Life Cycle Manager
- D. vRealize Log Insight
- E. vRealize Orchestrator

Answer: BD

Explanation:

Reference:

<https://docs.vmware.com/en/vRealize-Suite/7.0/com.vmware.vrealizesuite.overview.doc/GUID-A15F2F4D-108B-4C44-BCF7-FCB4EC76BCBE.html>

3.What is required to convert a VM to a template?

- A. Reregister the template.
- B. Choose a thin-provisioned format.
- C. Select a storage policy.
- D. Power off the virtual machine.

Answer: D

Explanation:

Reference: [https://pubs.vmware.com/vsphere-51/index.jsp?topic=%](https://pubs.vmware.com/vsphere-51/index.jsp?topic=%2Fcom.vmware.vsphere.vm_admin.doc%2FGUID-846238E4-A1E3-4A28-B230-33BDD1D57454.html)

[2Fcom.vmware.vsphere.vm_admin.doc%2FGUID-846238E4-A1E3-4A28-B230-33BDD1D57454.html](https://pubs.vmware.com/vsphere-51/index.jsp?topic=%2Fcom.vmware.vsphere.vm_admin.doc%2FGUID-846238E4-A1E3-4A28-B230-33BDD1D57454.html)

4.A cluster of vSphere 6.5 and 6.7 hosts all have identical hardware. VMs are created on the 6.7 hosts with virtual hardware version 14. During routine maintenance on the 6.7 hosts, the VMs are unable to migrate to the 6.5 hosts.

Why are the VMs unable to migrate to the 6.5 hosts?

- A. VMware Tools version is upgraded.
- B. EVC mode is disabled.
- C. DPM is configured incorrectly.
- D. The virtual hardware version is incompatible with 6.5.

Answer: B

5.An administrator is elevating the security posture of a vSphere environment after a recent data breach. All VMs will be encrypted as part of this plan.

Which additional component is required for the encryption?

- A. KMS server.
- B. vSAN encryption.
- C. two-factor authentication
- D. encrypted vSphere vMotion

Answer: D