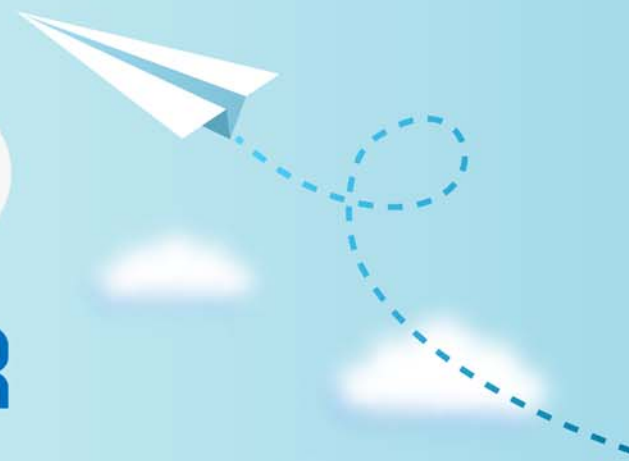


CERTPARK



QUESTION & ANSWER



CERTPARK.COM

Accurate Study Guides,
High Passing Rate!
provides update
free of charge
in one year!



Exam : 300-115

**Title : Implementing Cisco IP
Switched Networks**

Version : DEMO

1.Which three statements about extended VLANs are true? (Choose three)

- A. They require the extended system ID to be enabled on the device
- B. The lowest extended VLAN number is 1006
- C. The lowest extended VLAN number is 1002
- D. Any VLAN ID can be used as an extended VLAN
- E. They are propagated by VTP by default
- F. They are recognized only by VTP version 3

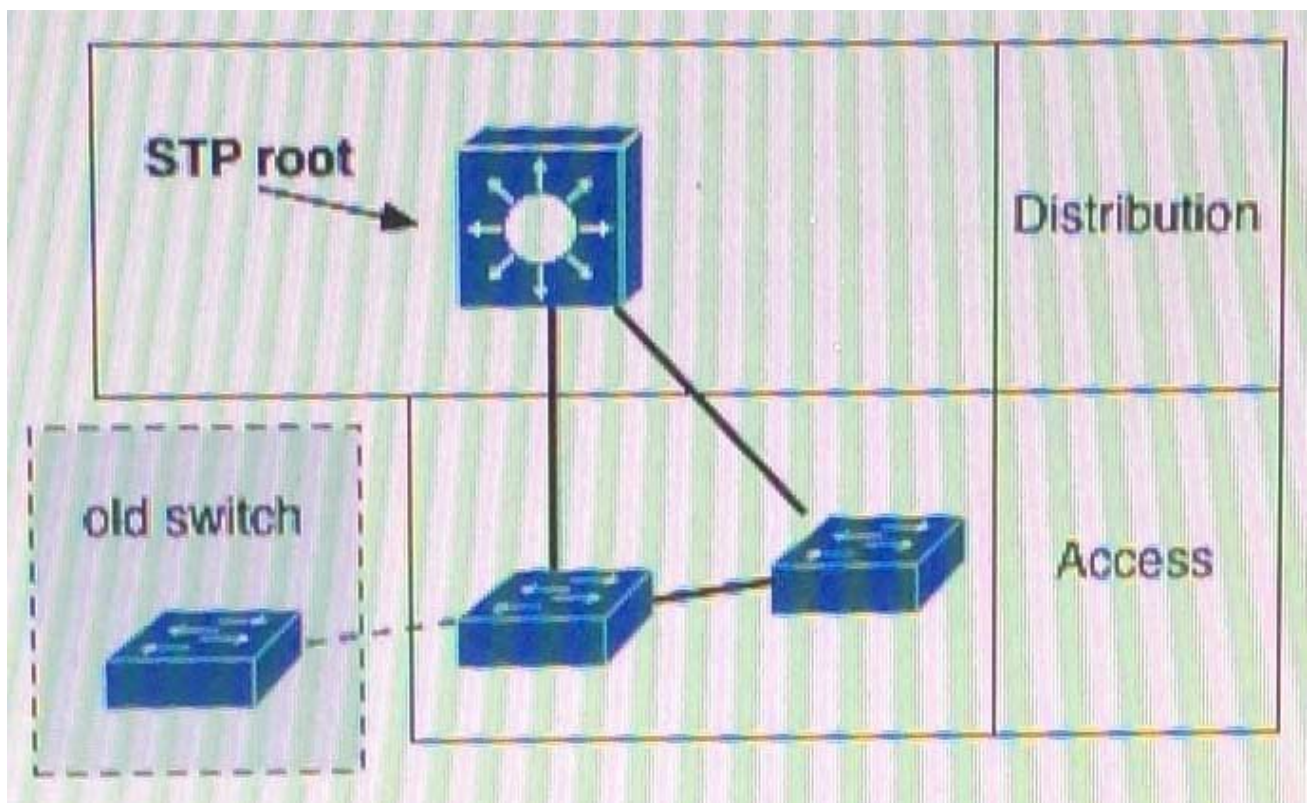
Answer: ABF

2.Which two statements about native VLANs are true? (Choose two)

- A. The VLAN tag is stripped from all incoming traffic that matches the native VLAN
- B. All incoming traffic that matches the native VLAN is dropped at the switch
- C. All untagged traffic that arrives on the device is placed into the native VLAN
- D. All outgoing traffic without a VLAN tag is tagged with the native VLAN.
- E. They are propagated through VTP.
- F. The default native VLAN is VLAN 11

Answer: CE

3.Refer to the exhibit.



A. network engineer deployed an older switch with the same spanning-tree priority as the existing root, which caused a network outage.

In which two locations should the Spanning Tree protocol root guard feature be implemented? (Choose two.)

- A. on the designated root switch downlinks to the access layer

- B. on Layer 3 boundaries in the distribution layer
- C. on all the non-root switch facing ports of the access layer
- D. globally on all network switches
- E. on the access layers root facing ports

Answer: AC

4.Which two statements about normal-range VLANs are true? (Choose two)

- A. You can add VLANs in VTP server mode
- B. Configurations are saved in the VLAN dat file
- C. The VLAN dat file is stored in RAM and copied to the NVRAM when you save the configuration
- D. You can delete VLANs 1002 through 1005 in transparent mode only
- E. You can add, modify, and remove configuration in VTP server mode and VTP client mode

Answer: AB

5.Which two statements correctly describe the benefits of GLBP? (Choose two)

- A. It can automatically adjust group weighting when an interface goes down
- B. LAN traffic can be distributed to up to six routers in a GLBP group
- C. It support up to 128 virtual routers per physical interface
- D. It can load-share LAN traffic across up to four AVFs in a GLBP group
- E. It uses dual active AVGs for redundancy

Answer: AD