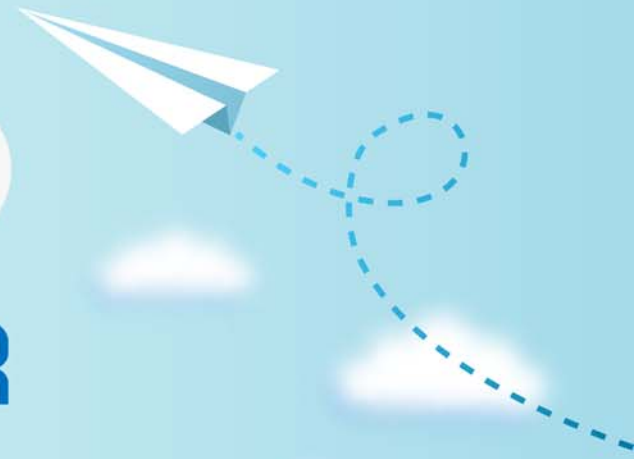


# CERTPARK

QUESTION & ANSWER



CERTPARK.COM

Accurate Study Guides,  
High Passing Rate!  
provides update  
free of charge  
in one year!



<https://www.certpark.com>

**Exam** : **300-209**

**Title** : **Implementing Cisco Secure  
Mobility Solutions**

**Version** : **DEMO**

1.Which encryption algorithm does Cisco recommend that you avoid?

- A. HMAC-SHA1
- B. AES-CBC
- C. DES
- D. HMAC-MD5

**Answer: C**

2.What are two benefits of using DTLS when implementing a Cisco AnyConnect SSI VPN on a Cisco ASA or router? (Choose two.)

- A. provides latency avoidance
- B. has enhanced dead peer detection
- C. uses TLS Only for the tunnel
- D. provides greater security and integrity of the tunnel
- E. establishes two simultaneous tunnels

**Answer: A,B**

3.An engineer is troubleshooting an IPsec site-to-site tunnel and verifies that the tunnel status is MM\_WAIT\_MSG6.

What can be determined from this message?

- A. The PSK has not been confirmed by the responder.
- B. The encryption policy has not been confirmed by the initiator.
- C. The encryption policy has not been confirmed by the responder.
- D. The PSk has not been confirmed by the initiator

**Answer: B**

4.Which cryptographic algorithm is used for data integrity?

- A. SHA-256
- B. ECDH-384
- C. ECDSA-256
- D. RSA-3072

**Answer: A**

5.An engineer is configuring a site-t-site VPM tunnel.

Which two IKV1 parameter must match on both peers? (Choose two.)

- A. encryption algorithm
- B. access lists
- C. encryption domains
- D. QoS
- E. hashing method

**Answer: A,E**