

# CERTPARK

## QUESTION & ANSWER



CERTPARK.COM

Accurate Study Guides,  
High Passing Rate!  
provides update  
free of charge  
in one year!



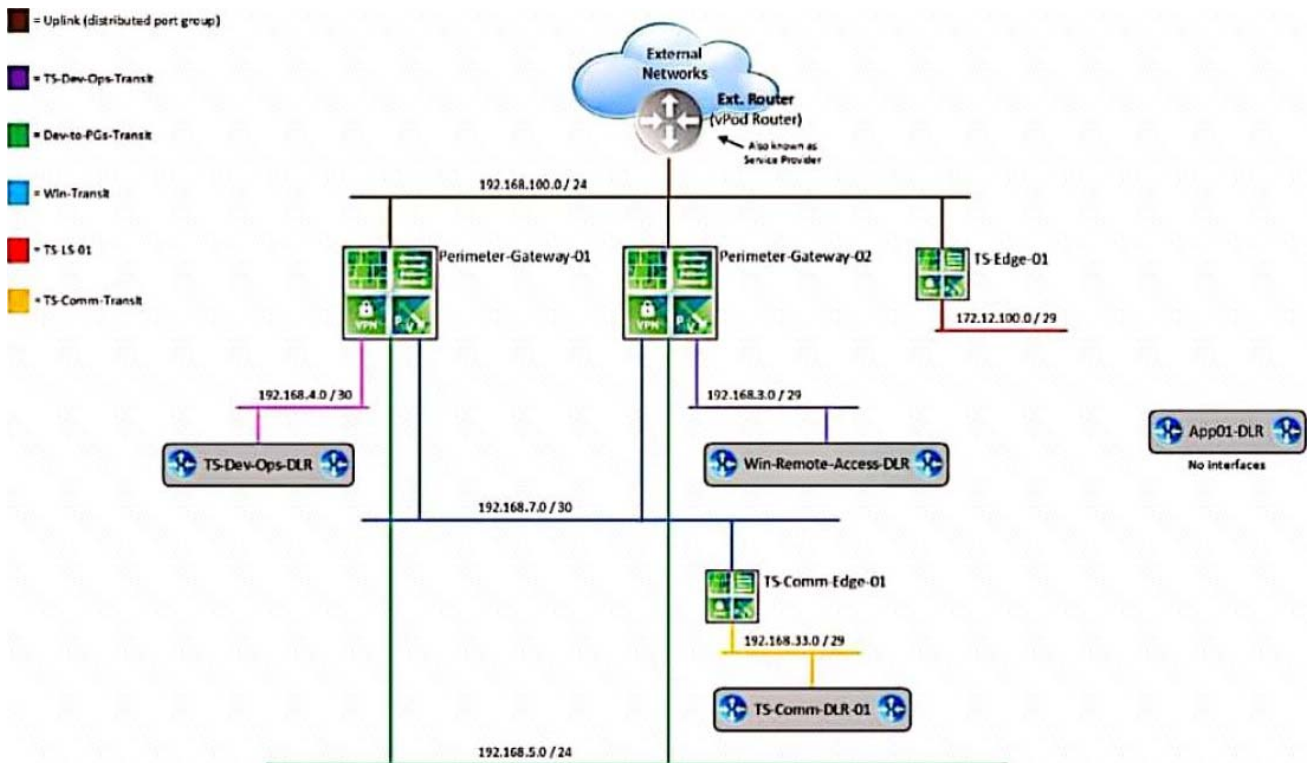
<https://www.certpark.com>

**Exam : 3V0-643**

**Title :** VMware Certified Advanced  
Professional 6 - Network  
Virtualization Deployment  
Exam

**Version :** DEMO

## 1. Topic 1, Main Questions



Questions HOL LAB Modules and Pages for practice

1

<http://docs.hol.vmware.com/hol-isim/HOL-2019/hol-1903-01-nsxinstall-p1.htm>

HOL-1903-01 Page 16 or you can directly Open a NSX manager in the lab and edit the existing settings

bOpen PSC and NSX manager in HOL-1903-01 and look for NTP Server

load nation

cExport existing vDS config and Import back the config for practice in

HOL-1903-01

dNo Lab Module available

2

<http://docs.hol.vmware.com/hol-isim/HOL-2019/hol-1903-01-nsxinstall-p2.htm>

and LAB - HOL 1903-01 Page 26-36

3LAB - HOL 1903-01 Module 2 - Page 37-38

4LAB - HOL 1903-01 Module 4 – Practice and understand whole module Bridging and other questions 7, 8, 9 and LAB - HOL-1925-02 Module 1

5LAB - HOL 1903-01 Module 4 - shows how to deploy NSX Edge, you can also deploy Distributed logical router DLR in the same way the lab.

6LAB - HOL 1903-01 Module 3 – Practice and understand the whole module, it will be use full for other question like 20 and 22

7LAB - HOL 1903-01 Module 4 – Practice and understand whole module Bridging and other questions 7, 8, 9

8LAB - HOL 1903-01 Module 4 – Practice and understand whole module Bridging and other questions 7, 8, 9

9LAB - HOL 1903-01 Module 4 – Practice and understand whole module Bridging and other questions 7,

8, 9

10LAB - HOL-1903-02 Module 1 and 2

11LAB - HOL-1903-02 Module 1 and 2

12LAB - HOL-1903-02 directly follow the steps in this document for practice

13LAB - HOL 1903-01 - open an NSX manager in LAB and directly follow the steps in this document.

14LAB - HOL 1903-01 - open postman in the lab and directly follow the steps in this document.

15LAB - HOL 1903-01 - directly follow the steps in this document for practice.

16LAB - HOL 1903-01 - directly follow the steps in this document for practice.

17LAB - HOL-1925-02 Module 1

18LAB - HOL-1925-02 Module 1

19 LAB - HOL-1925-02 - directly follow the steps in this document for practice.

20LAB - HOL 1903-01 Module 3 – Practice and understand the whole module.

21No Lab Module available

22LAB - HOL 1903-01 Module 3 – Practice and understand the whole module.

23LAB - HOL 1903-01 - open postman in the lab and directly follow the steps in this document.

(Exam Topic 1)

Two administrators (John and Chris) share admin responsibilities for an NSX deployment that is leveraging Centralized CLI as part of their management. Security requirements prohibit use of shared admin accounts in Site A.

**Requirements:**

NSX Manager: nsxmgr-01a.crop.local

New administrator accounts: "John" and "Chris"

Default password: VMware1!

Create accounts for John and Chris.

Use one of the newly created accounts to display all clusters enabled for the distributed firewall.

Use Putty's "Copy All to Clipboard" feature to paste the command and output to a text file dfw-NEW.txt on the ControlCenter desktop.

**NOTE:**

Screenshot is shown on how to use Putty's Copy all to Clipboard feature.

HOL LAB for Practice:

See the explanation part for complete solution.

**Answer:**

**SOLUTION:**

13:(1) select vccenter - a. select datacenter A and click right mouse button select administrator. select user and groups click on + sign. select user tab enter user name john password VMware1!. click ok . do same for chris.

(2) select datacenter A. select manage tab. select permission. click + Sign. select Read Only from Assign Role. select All Privileges click on Add. select John and chris.checked Propagate to children and click on OK.

(3) go NsX Manager. select Nsx Manage-a. select manage select user from tab. click + sign. select identity user. check specify vcenter user. enter user name john@vsphere.local click next. select role Nsx Administrator. click finish. do same for chris. but use chris@vsphere.local and assign role of Nsx administrator click finish.

6 of 336

Enable

VMware1!

Conf t

User john password plaintext VMware1!

User chris password plaintext VMWare1!

Exit

Write memory

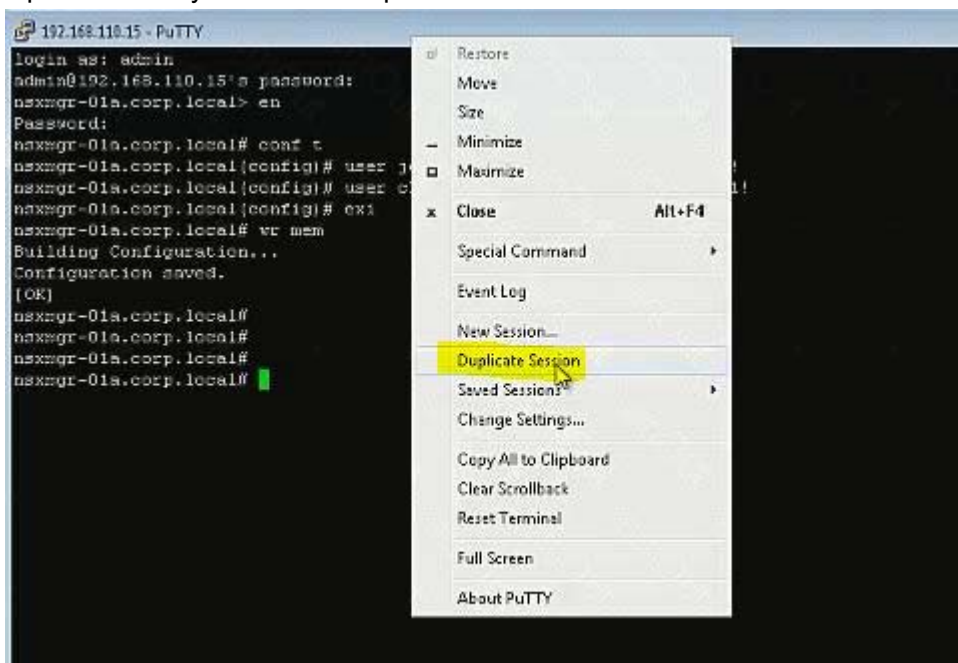


```

192.168.110.15 - PuTTY
login as: admin
admin@192.168.110.15's password:
nsxmgr-01a.corp.local> en
Password:
nsxmgr-01a.corp.local# conf t
nsxmgr-01a.corp.local(config)# user john password plaintext VMware1!
nsxmgr-01a.corp.local(config)# user chris password plaintext VMWare1!
nsxmgr-01a.corp.local(config)# exi
nsxmgr-01a.corp.local# wr mem
Building Configuration...
Configuration saved.
[OK]
nsxmgr-01a.corp.local#
nsxmgr-01a.corp.local#
nsxmgr-01a.corp.local#
nsxmgr-01a.corp.local#

```

Open new Putty session or Duplicate Session:

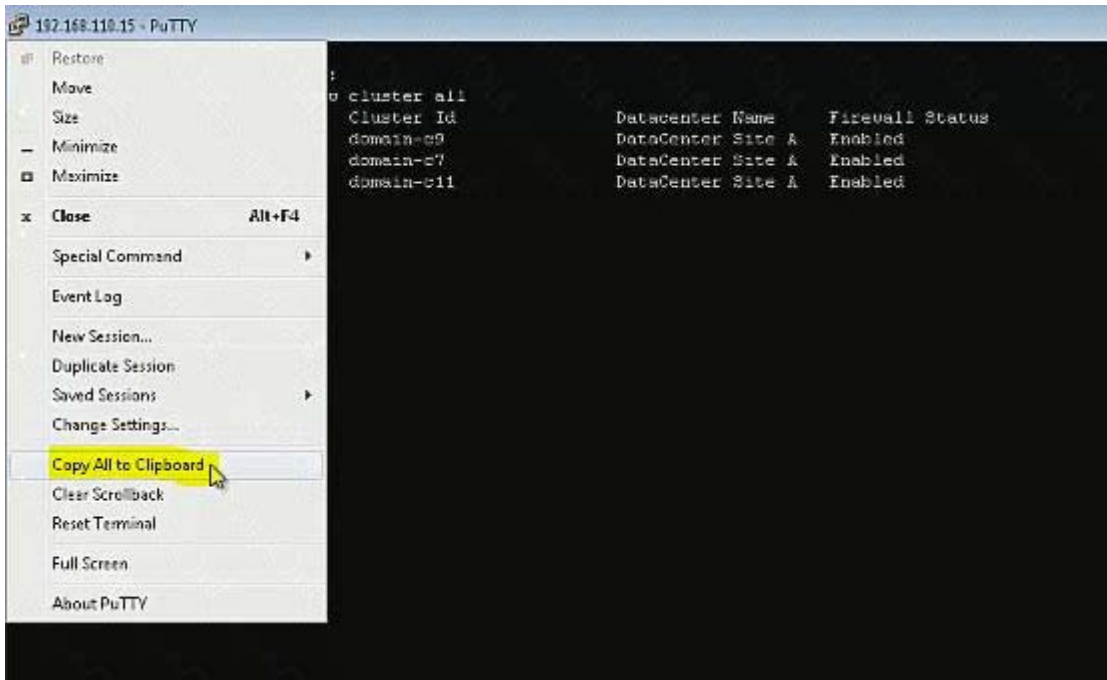


john

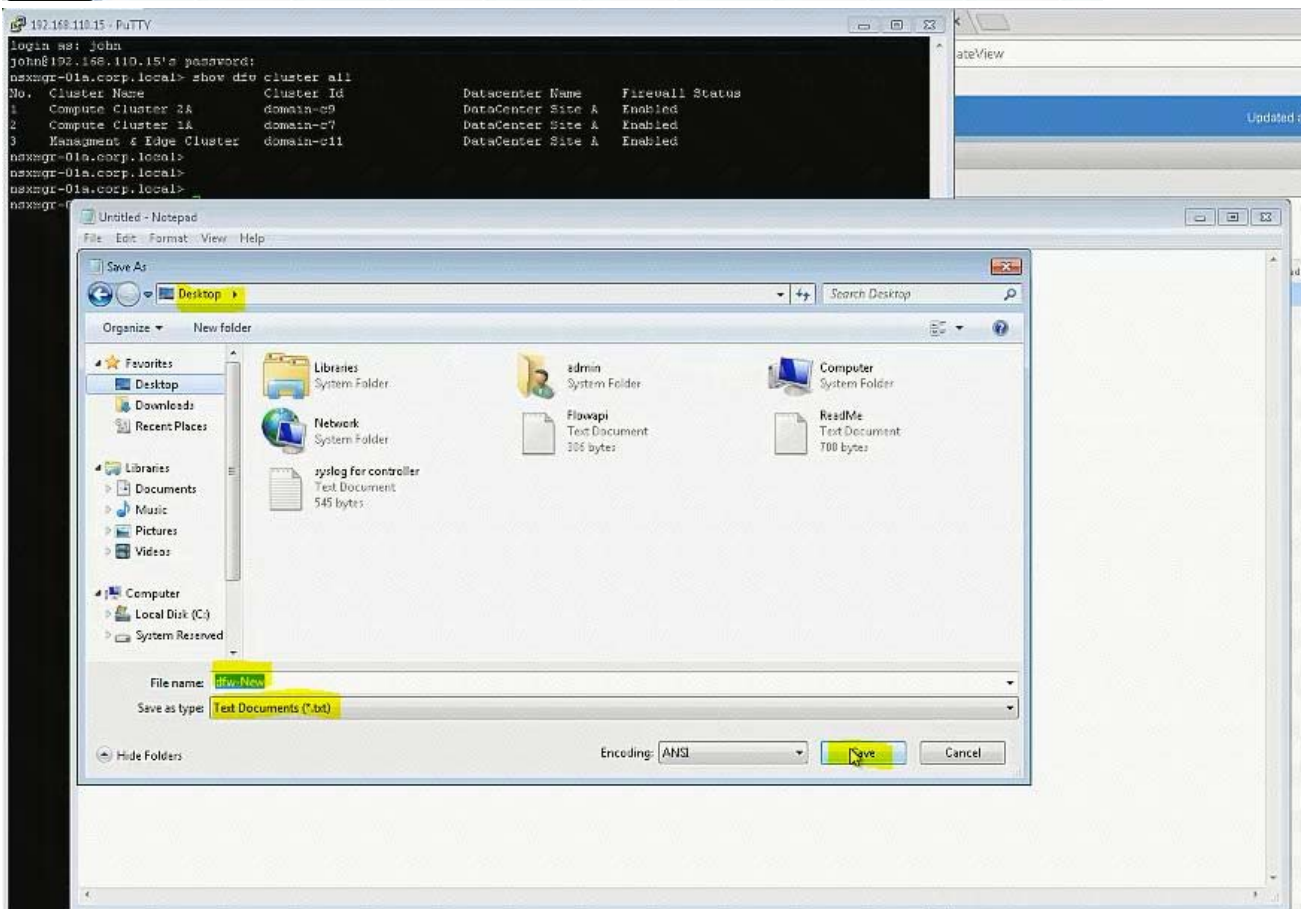
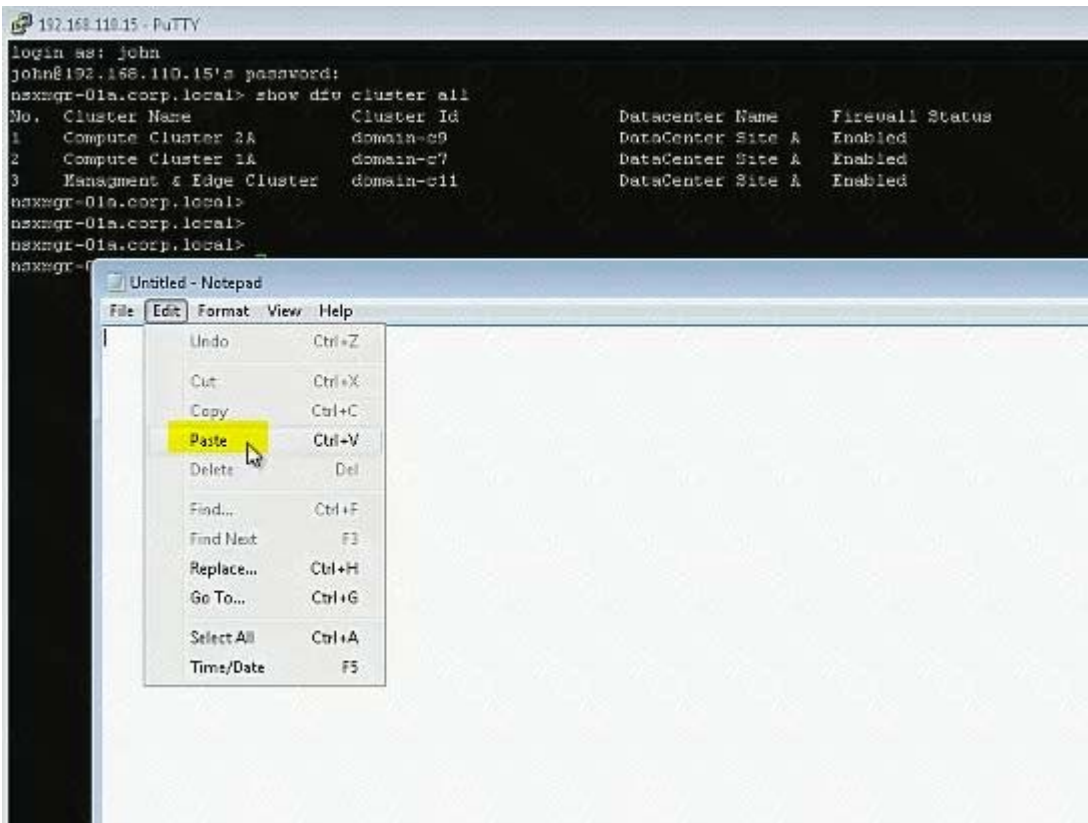
VMware1!

Show dfw cluster all

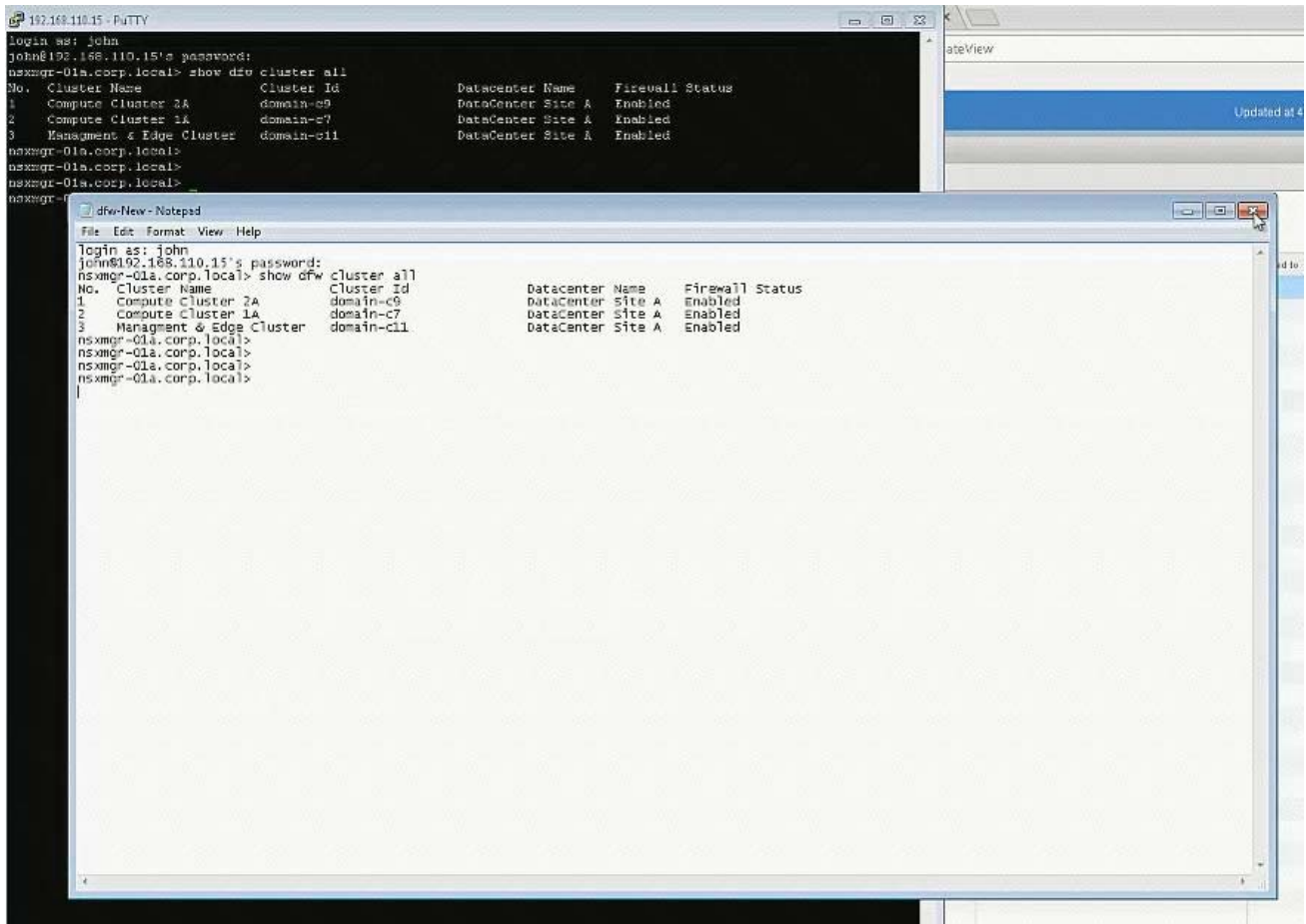
```
192.168.110.15 - PuTTY
login as: john
john@192.168.110.15's password:
nsxmgr-01a.corp.local> show dfc cluster all
No. Cluster Name Cluster Id Datacenter Name Firewall Status
1 Compute Cluster 2A domain-c9 DataCenter Site A Enabled
2 Compute Cluster 1A domain-c7 DataCenter Site A Enabled
3 Management & Edge Cluster domain-c11 DataCenter Site A Enabled
nsxmgr-01a.corp.local>
nsxmgr-01a.corp.local>
nsxmgr-01a.corp.local>
nsxmgr-01a.corp.local>
```



Ctrl+V don't work in exam.







## 2. (Exam Topic 1)

Management has approved an expansion of the virtual infrastructure. You have been tasked to prepare Cross vCenter configuration with the second vCenter Server. Another administrator has provided a pre-configured vDS configuration file located on the Control Center Server. All identifiers must be maintained.

### Requirements:

vCenterB server: vcsa-01b.corp.local

Credentials: administrator@vsphere.local / VMware1!

vCenterB VAMI Credentials: root / VMware1!

Cluster: Computer Cluster 1B

ESXI Hosts: esx-01b.corp.local, esx-02.corp.local

Platform service controller: psc-01a.corp.local(192.168.110.9)

NSX Manager: nsmgr-01b.corp.local (192.168.210.15)

Credentials: admin / VMware1!

Time Zone: US/Pacific

\*Configure nsmgr-01b.corp.local for vCenterB and psc-01a.corp.local

\*Ensure nsxmgr-01b.corp.local uses the same NTP server as psc-01a.corp.local with a US/Pacific TimeZone.

\*Import the new vDS configuration vds-site-b-Compute-New.zip



All identifiers must be maintained.

\*Assign the remaining two used vmnics for the ESXi hosts to the newly imported vDS.

#### NOTE:

Do not migrate VMkernels from the standard switches on the hosts.

HOL LAB for Practice:

a <http://docs.hol.vmware.com/hol-isim/HOL-2019/hol-1903-01-nsxinstall-p1.htm>

HOL-1903-01 Page 16 or you can directly Open a NSX manager in the lab and edit the existing settings

bOpen PSC and NSX manager in HOL-1903-01 and look for NTP Server load cation

cExport existing vDS config and Import back the config for practice in HOL-1903-01

dNo Lab Module available

See the explanation part for complete solution.

#### Answer:

#### SOLUTION:

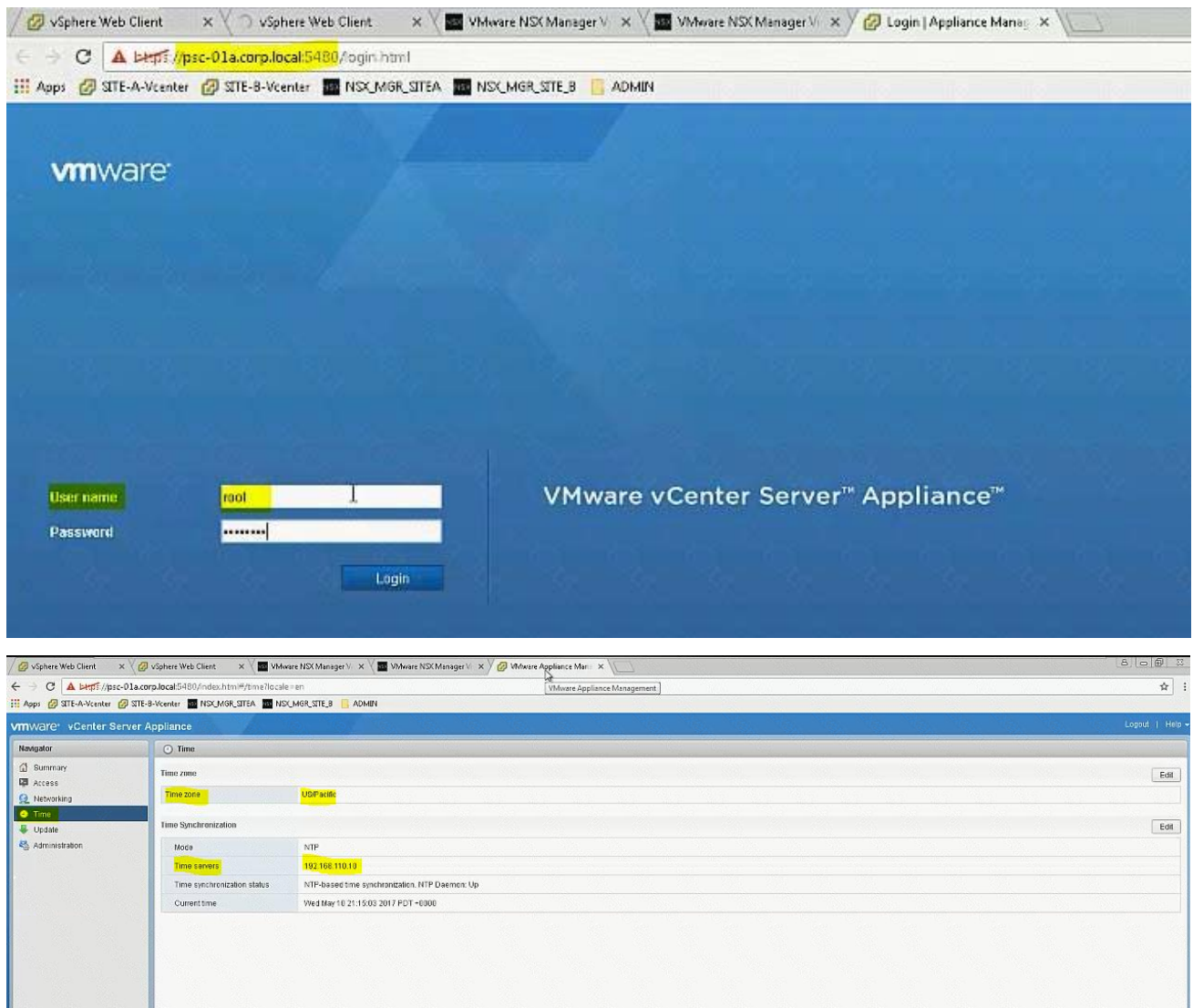
Step 1: Login to PSC using VAMI credentials and note down the time zone and server details and use the same in SiteB NSX Manager time settings.

Step 2: Update the time settings, complete lookup service configuration, associate SiteB NSX manager to SiteB vCenter. Check the status from SiteA vCenter Webclient -> Networking & Security -> Installation -> Management.

Step 3: Import the Distributed switch to Cluster B, add the hosts & assign the interfaces.

Login to <https://psc-01a.corp.local:5480/> to check the NTP server details and note it down. Use the VAMI credentials given to login. Need to click on Edit to see the server details in here as it is not showing up in the main page (In exam, it is showing in the main page itself).

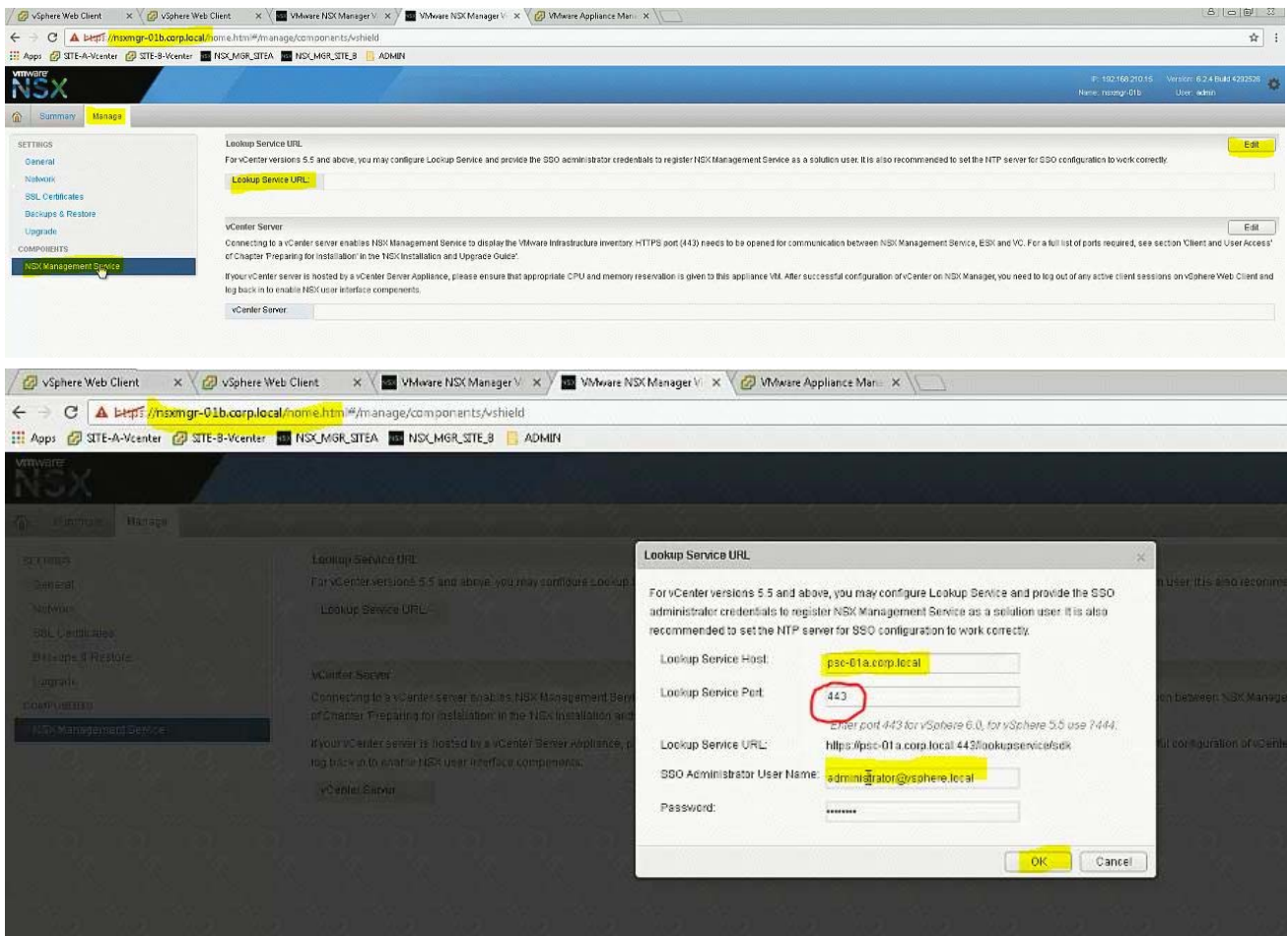




The first screenshot shows the VMware NSX Manager Virtual Appliance login page. The browser address bar displays `https://nsxmgr-01b.corp.local/login.jsp?sessionId=F4FBF0172A022A3051F91F874D6D4915`. The login form includes fields for 'User name: admin' and 'Password: \*\*\*\*\*', with a 'Login' button. The background features the VMware NSX logo.

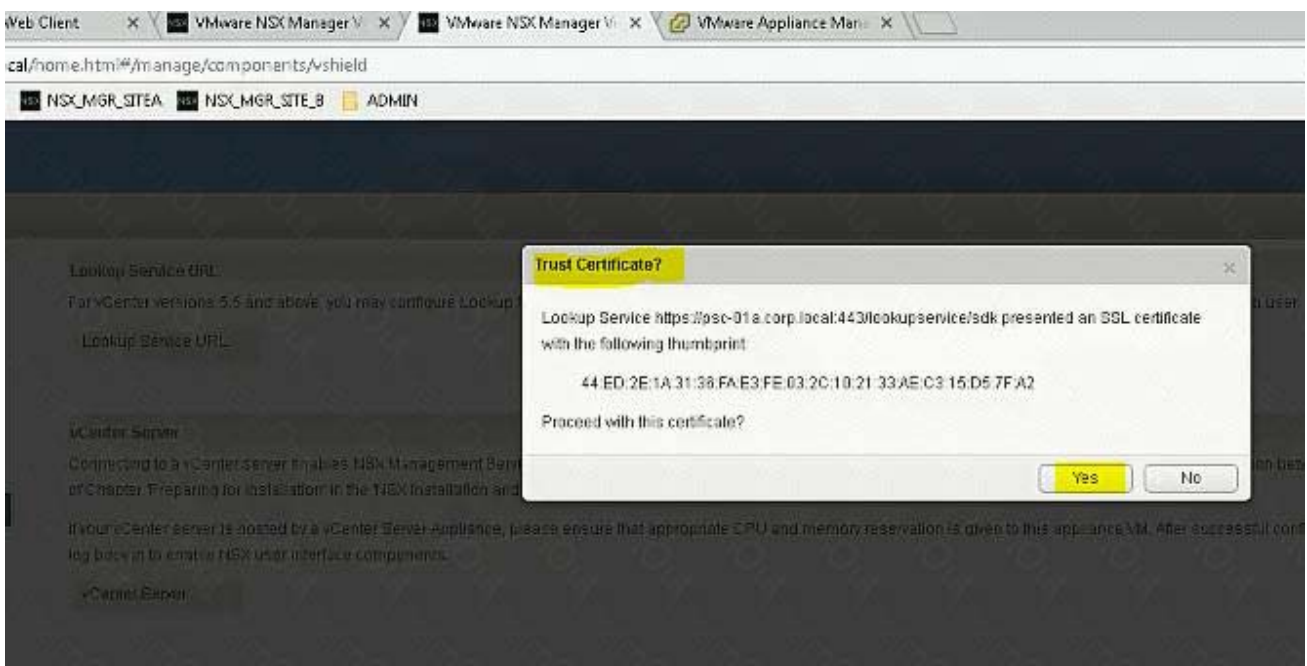
The second screenshot shows the 'Time Settings' dialog box. It prompts the user to 'Specify NTP server below. For SSO configuration to work correctly it is required that the time on this virtual appliance and NTP server should be in sync. It is recommended to use the same NTP server used by the SSO server.' The dialog shows 'NTP Server: 192.168.110.10', 'Timezone: US Pacific', and 'Date/Time: MM/DD/YYYY HH:MM:SS'. 'OK' and 'Cancel' buttons are at the bottom.

The third screenshot shows the 'Settings' page in the VMware NSX Manager. A notification at the top states: 'NTP server settings have been changed. NSX Management Service needs to be restarted for NTP server settings to take effect.' The 'Time Settings' section is expanded, showing 'NTP Server: 192.168.110.10', 'Timezone: US Pacific', and 'Date/Time: 05/10/2017 21:19:57'. Other sections like 'Syslog Server' and 'Locale' are also visible.

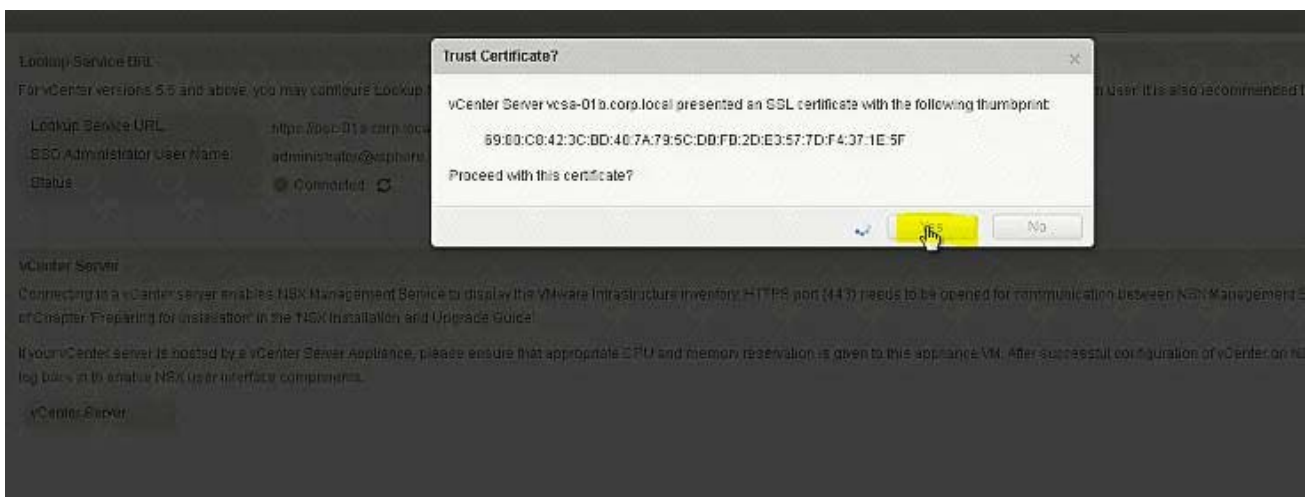
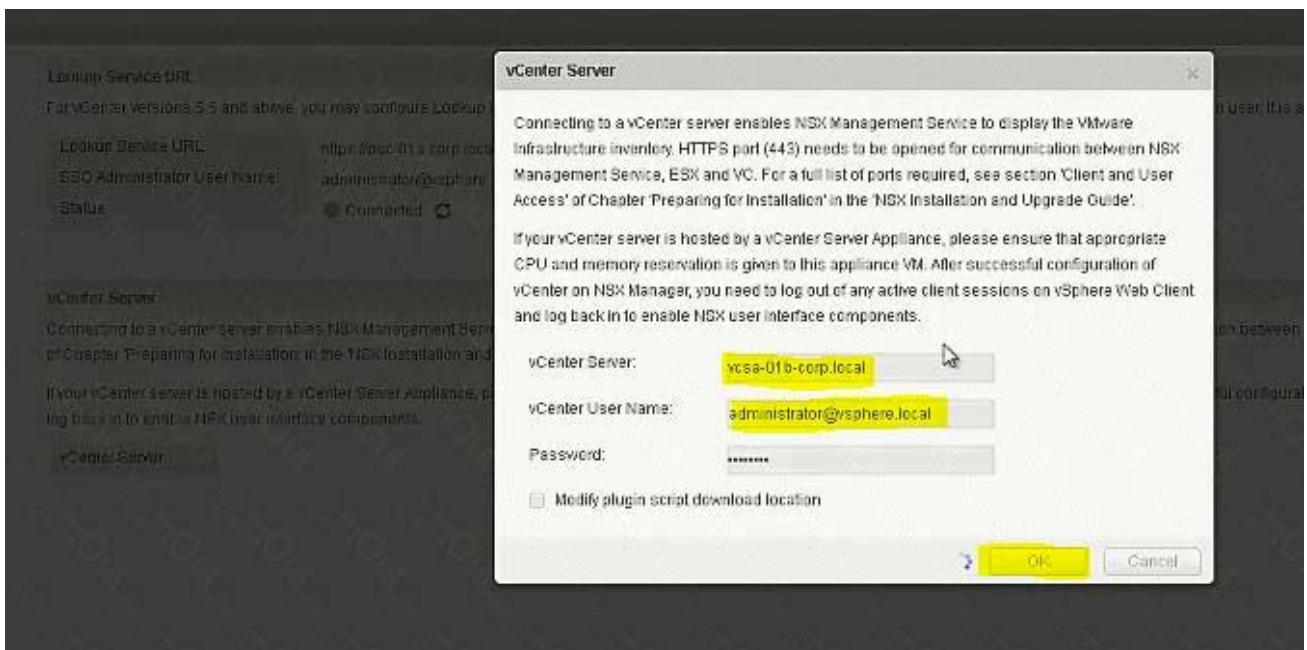
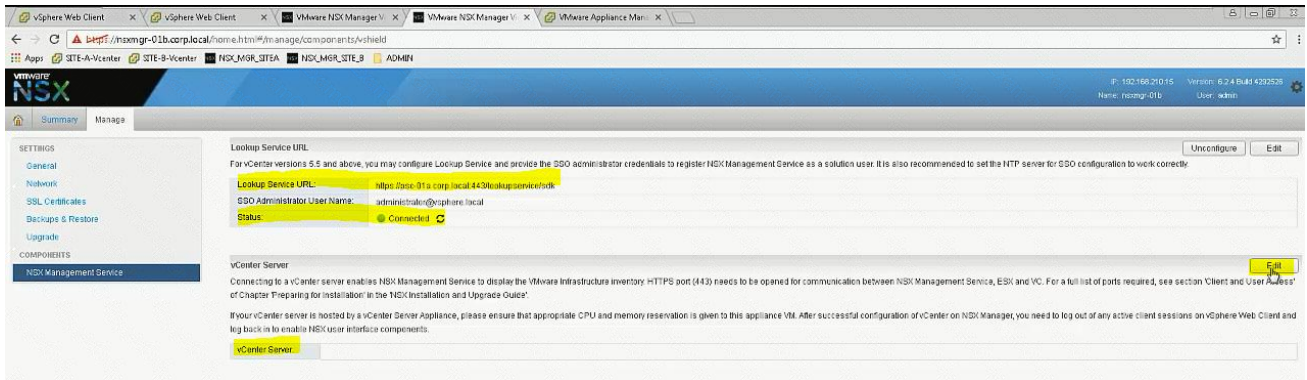


Important NOTE:

In exam change Lookup Service Port according to NSX Manager of Site A which is working one. It's 7444 in exam.



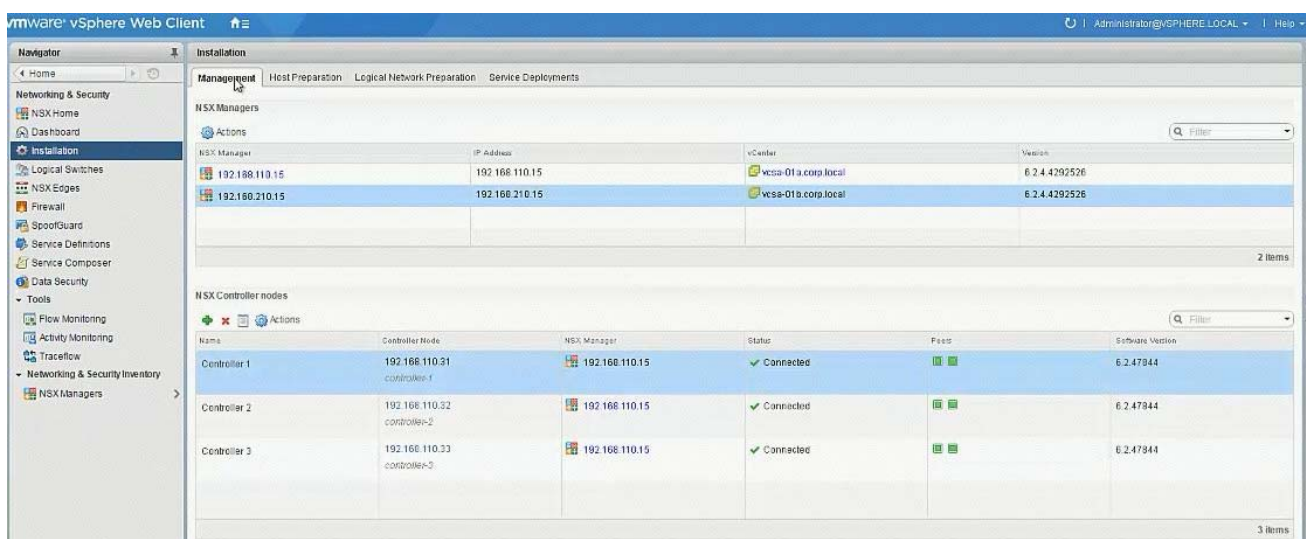
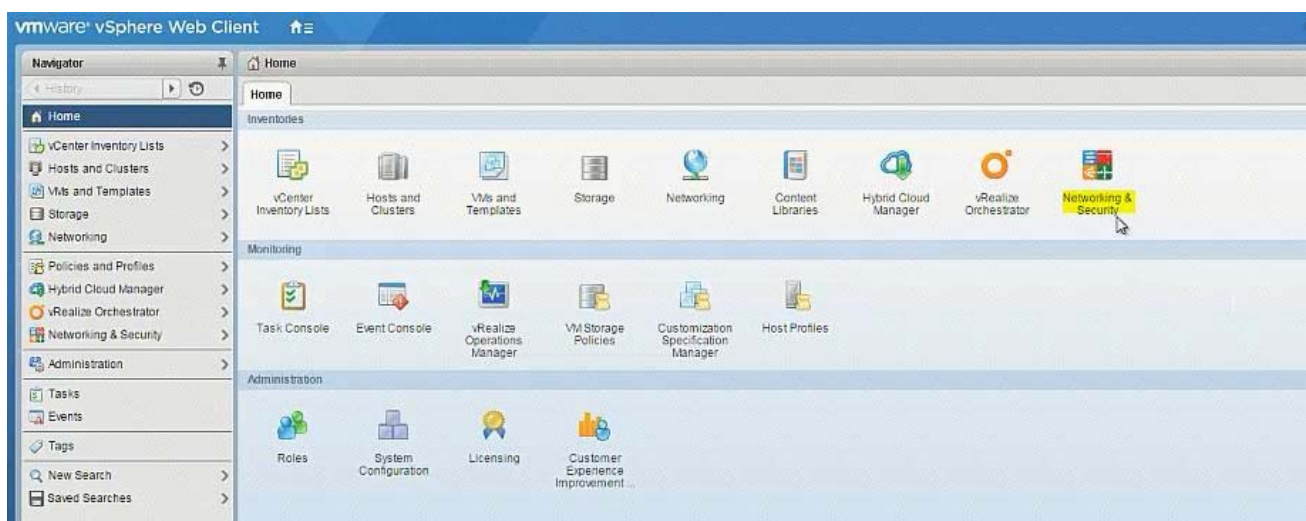


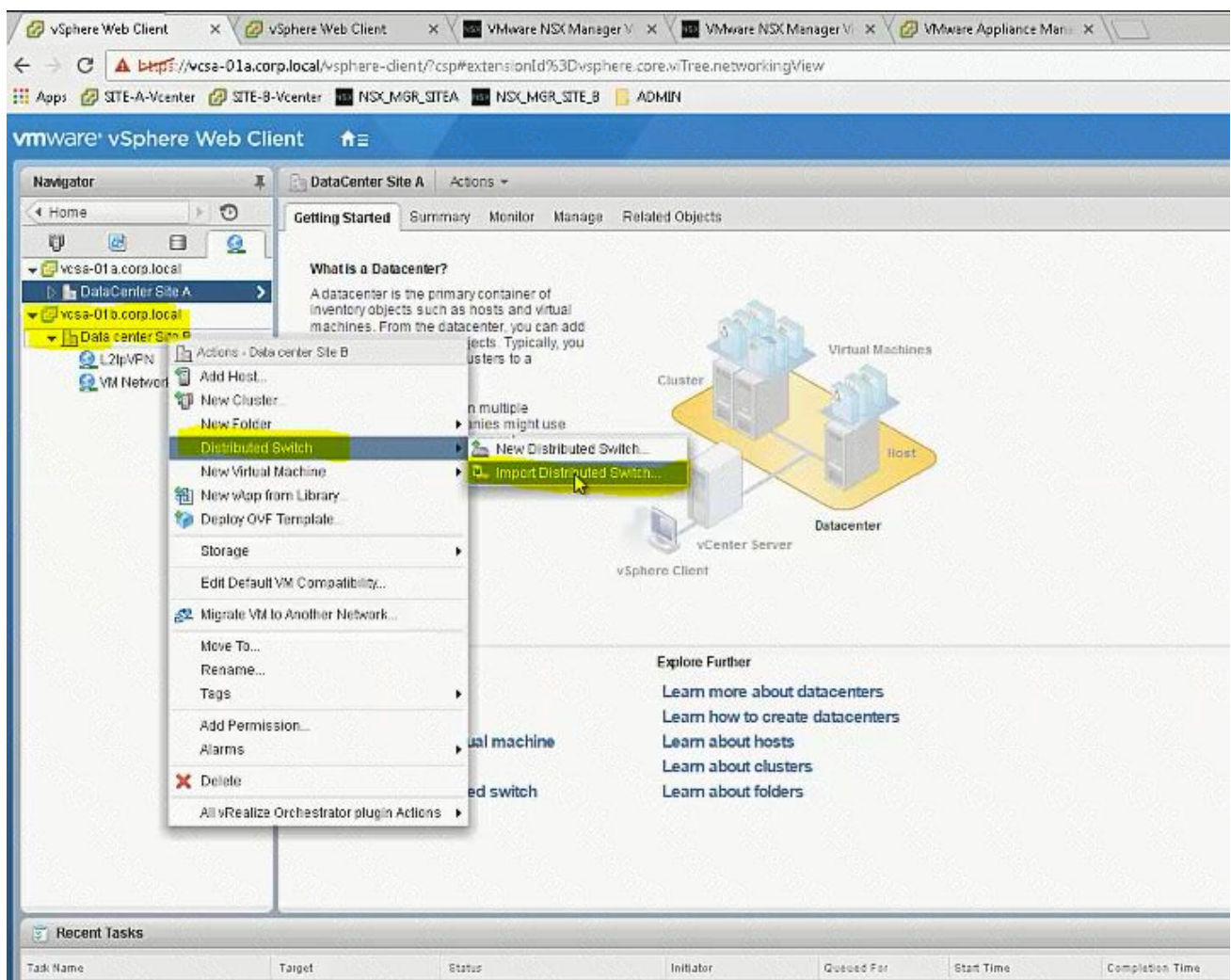
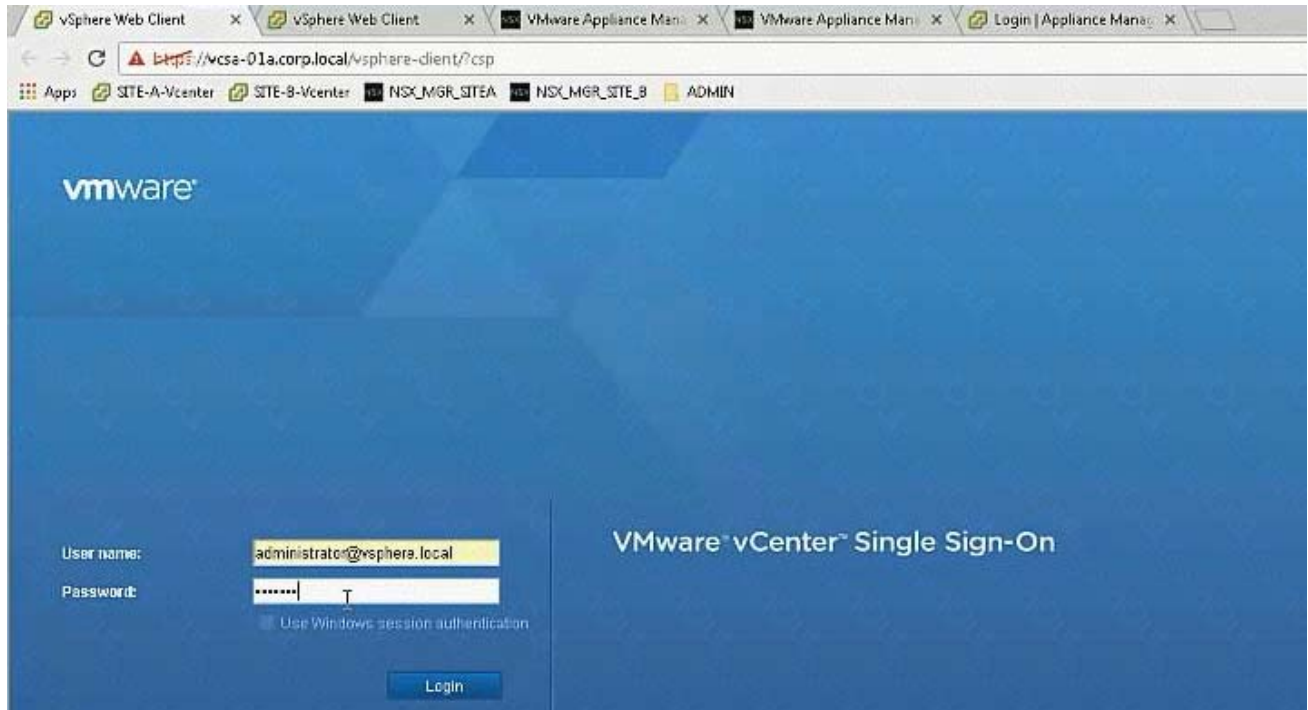




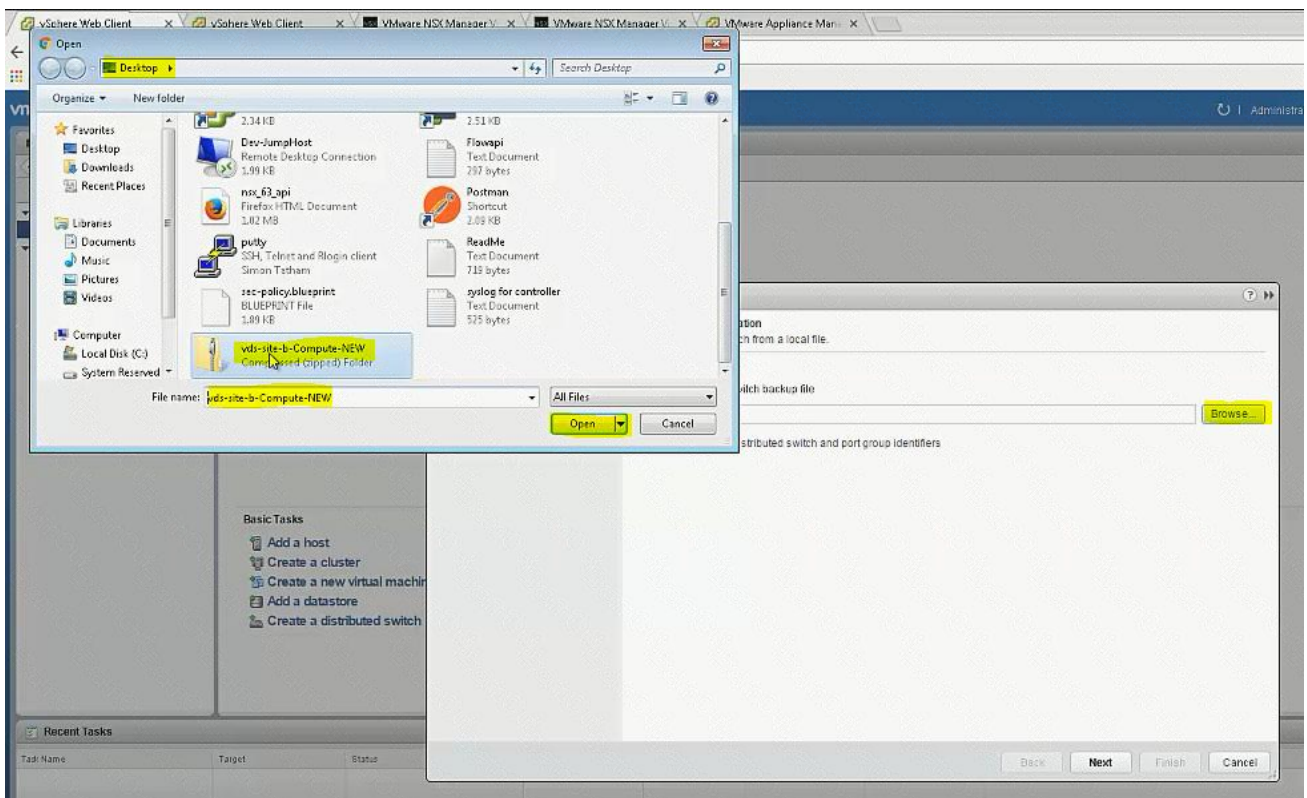
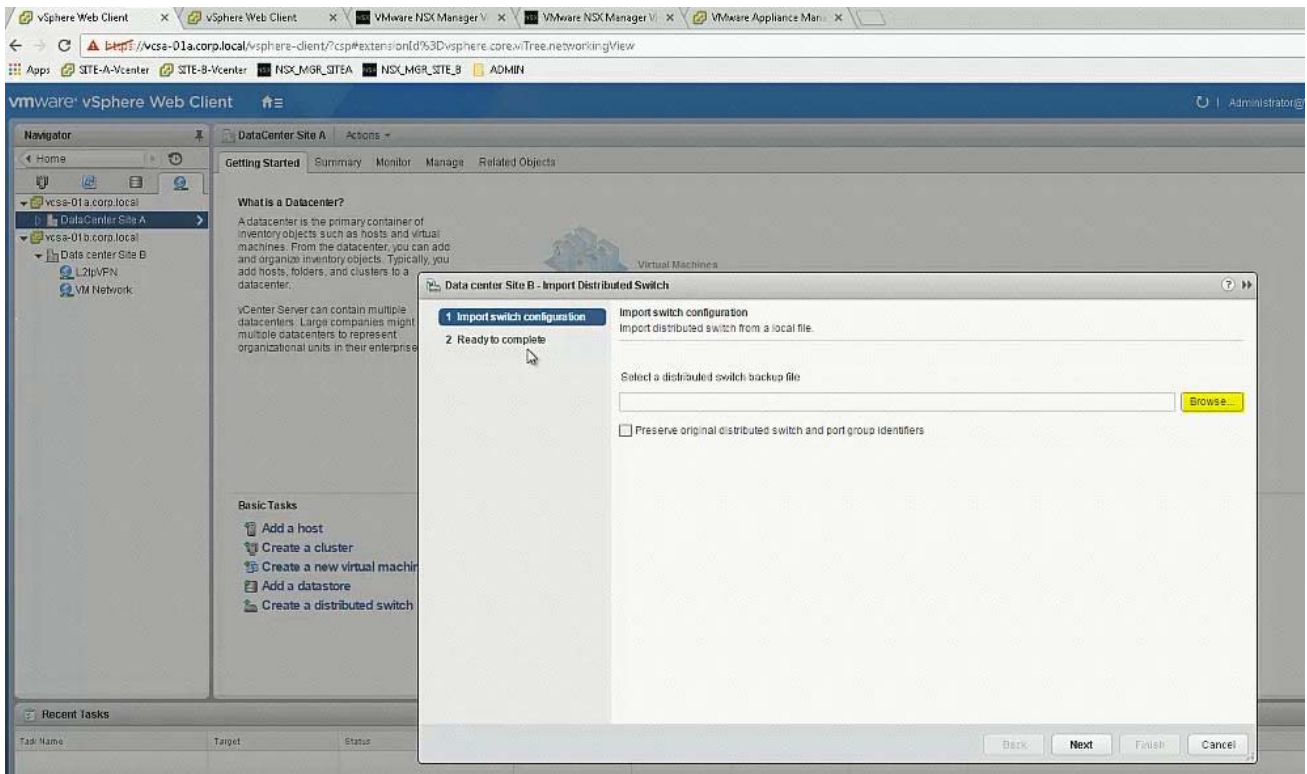
Click refresh if in case it shows as disconnected.

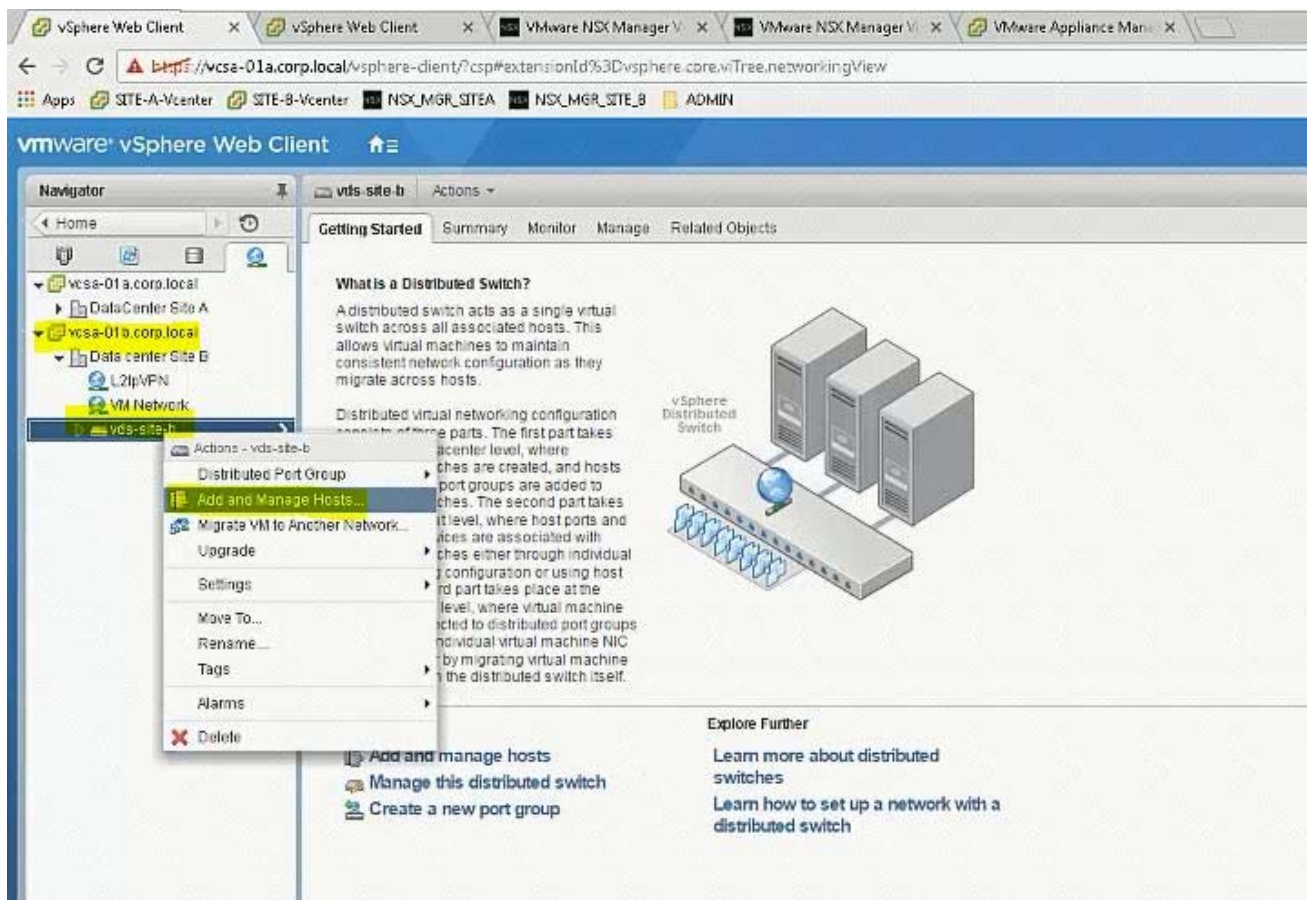
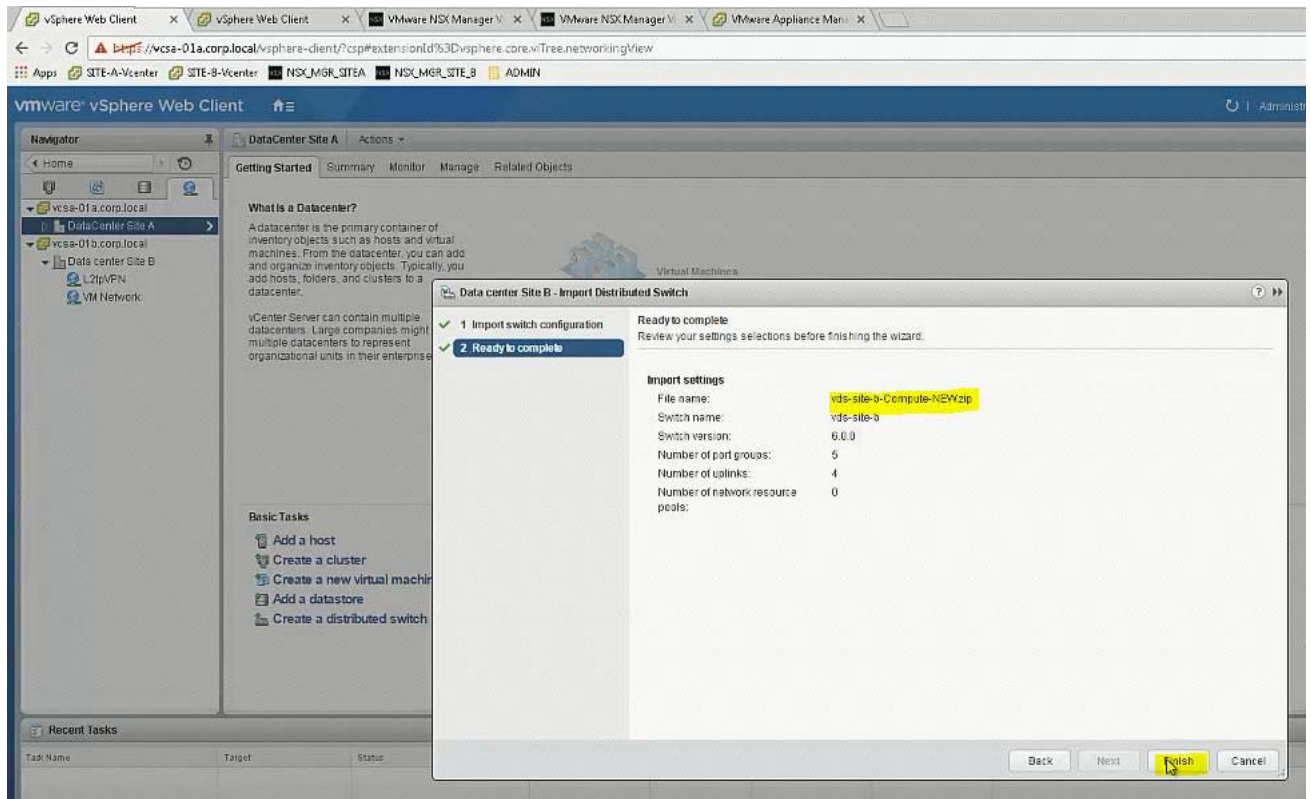
Login to SiteA vCenter using Web Client and confirm the status of both the NSX Managers: Installation -> Management.



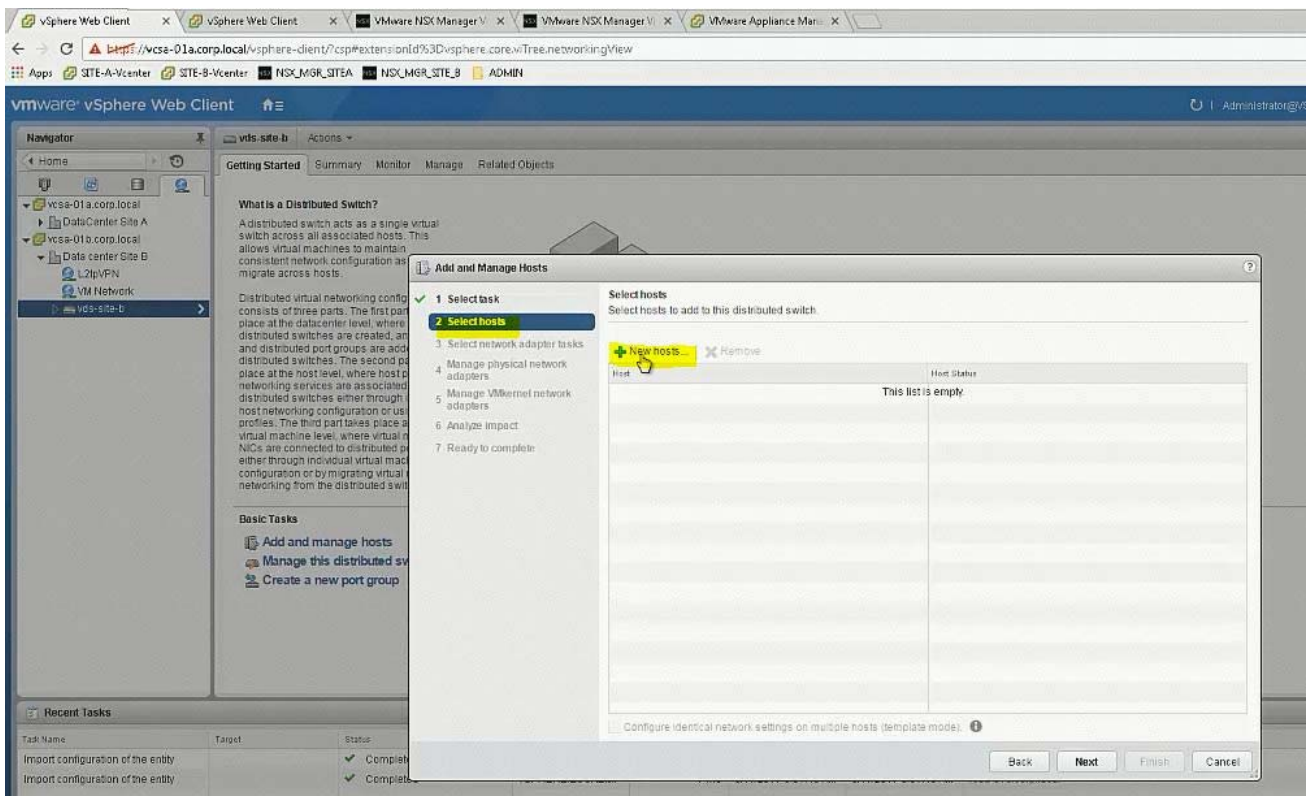
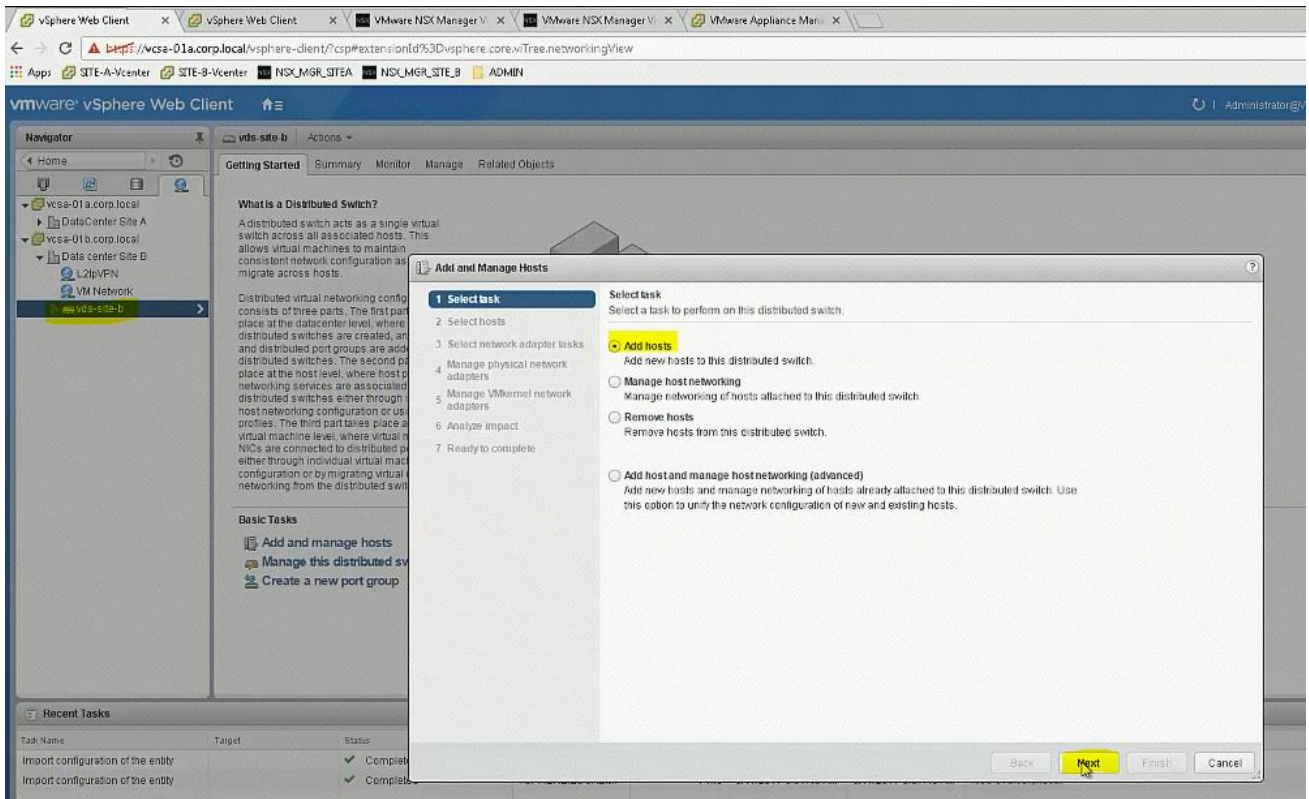


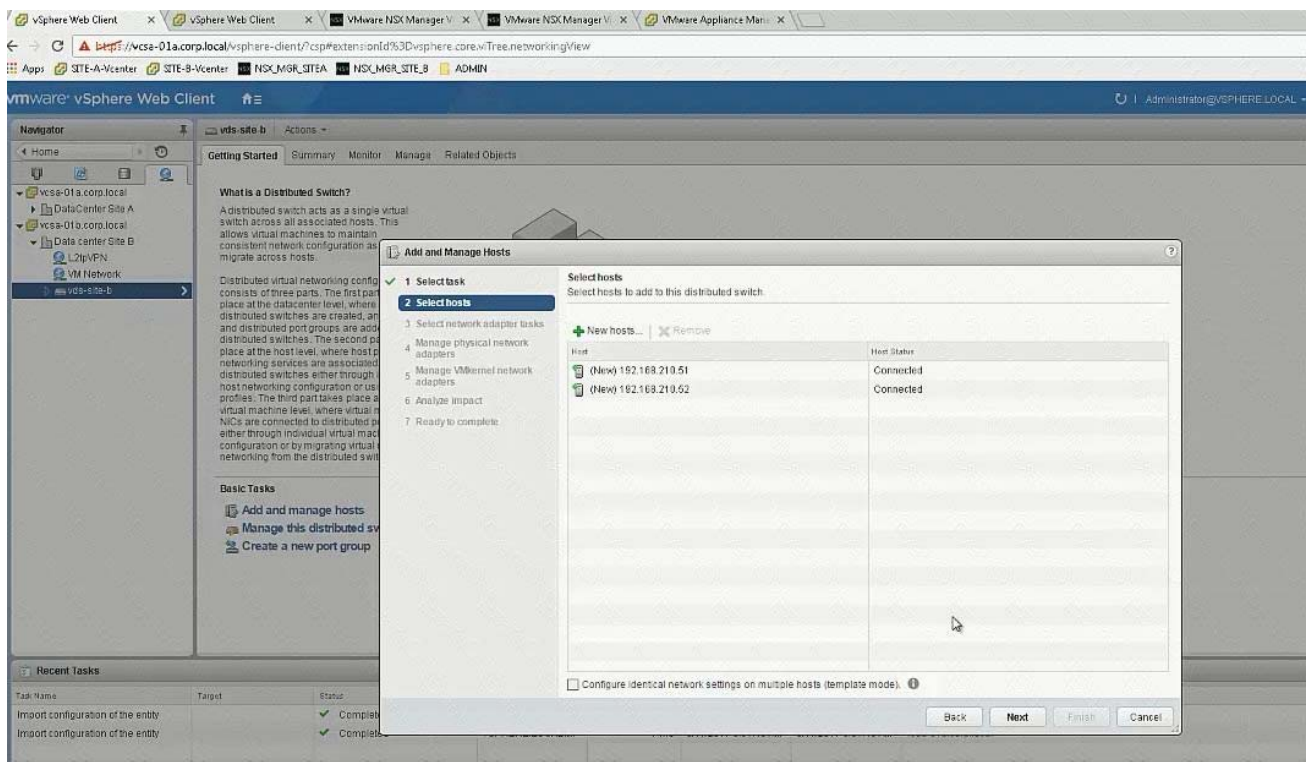
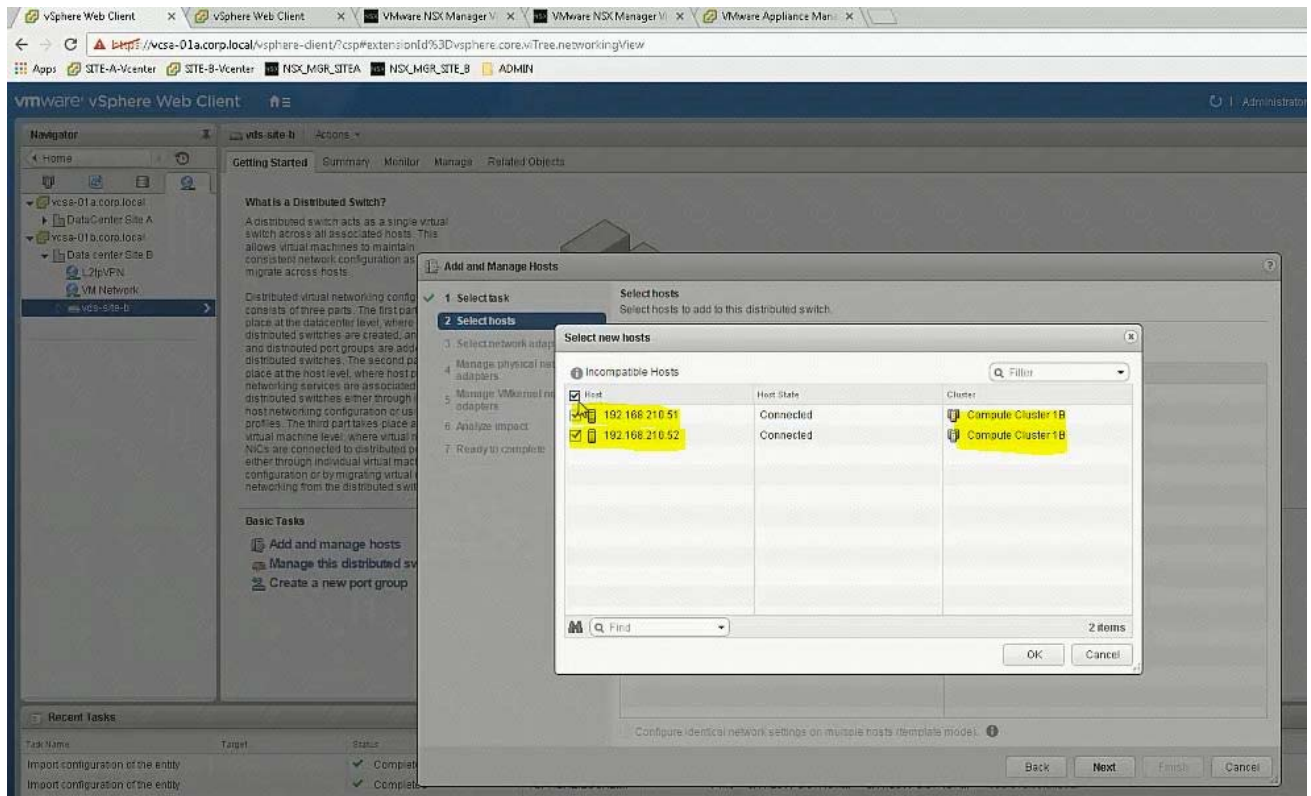




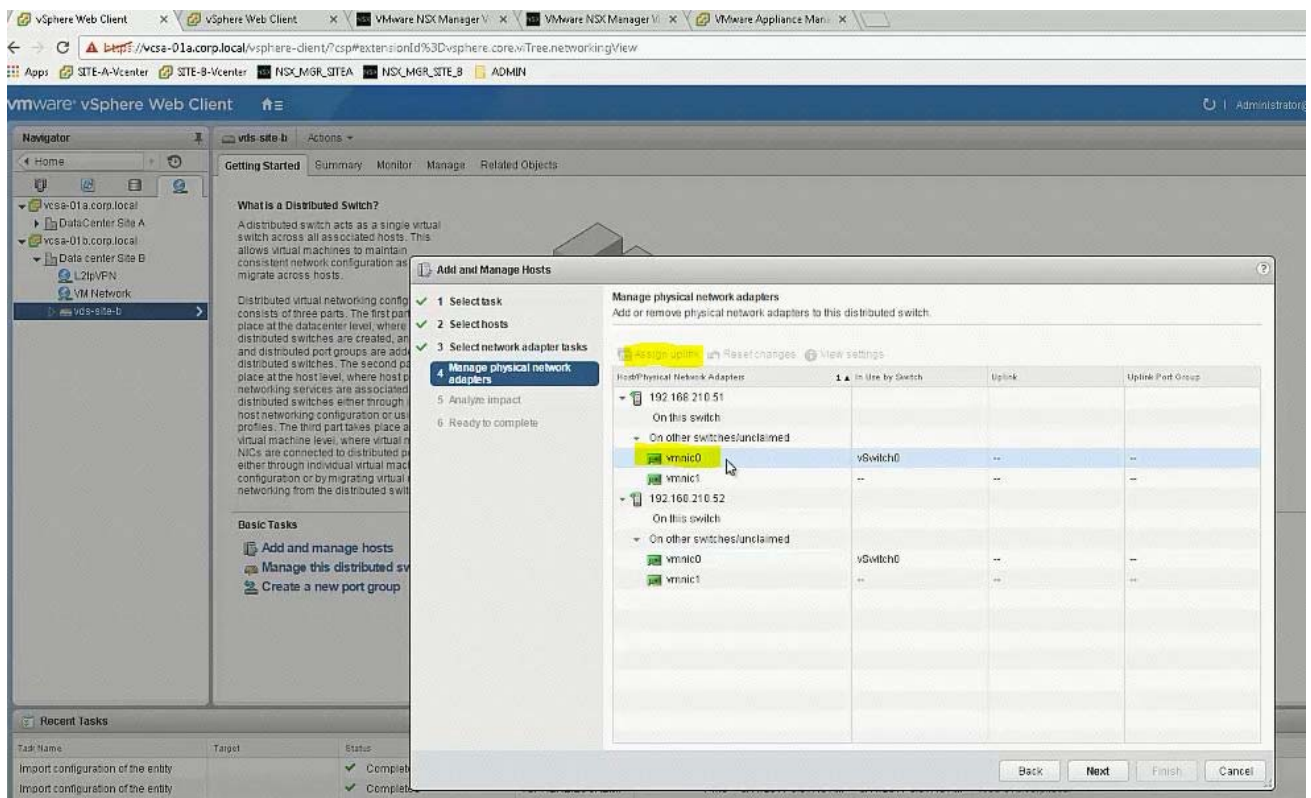
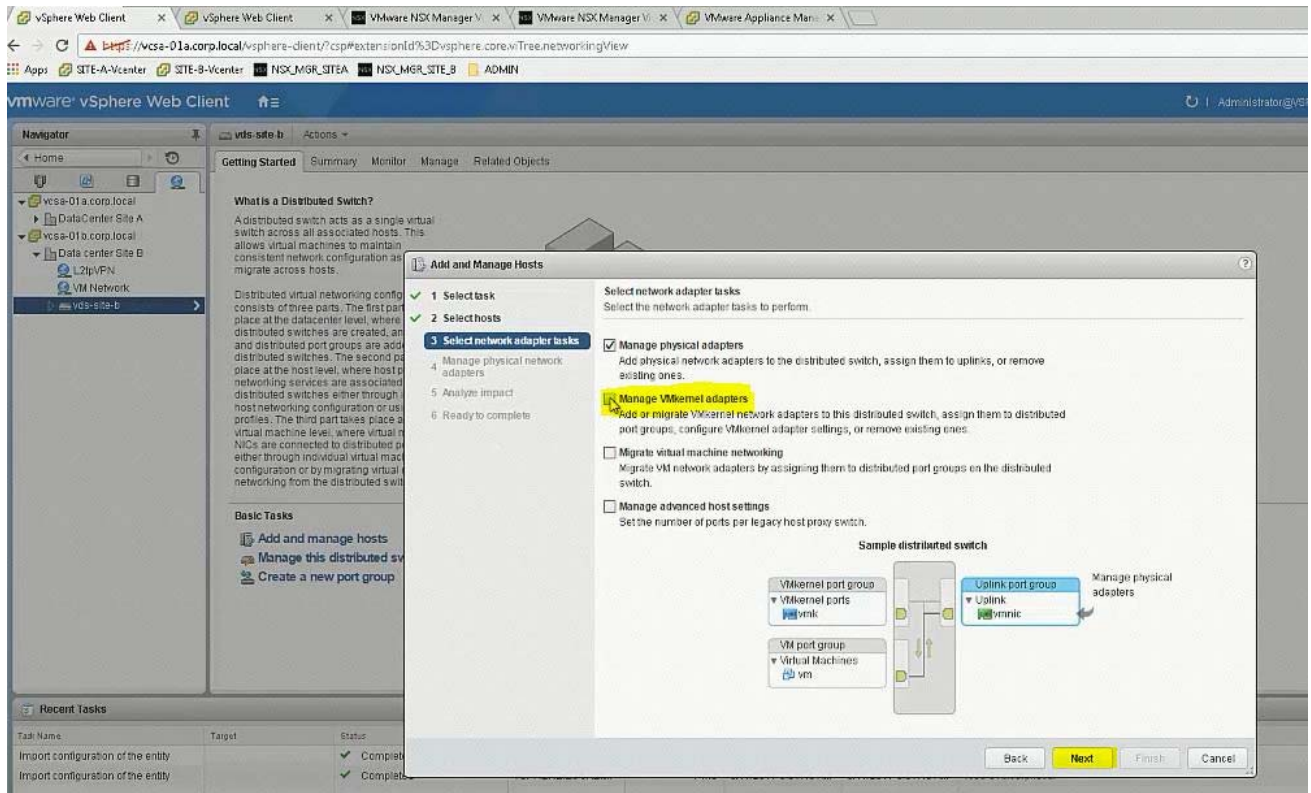


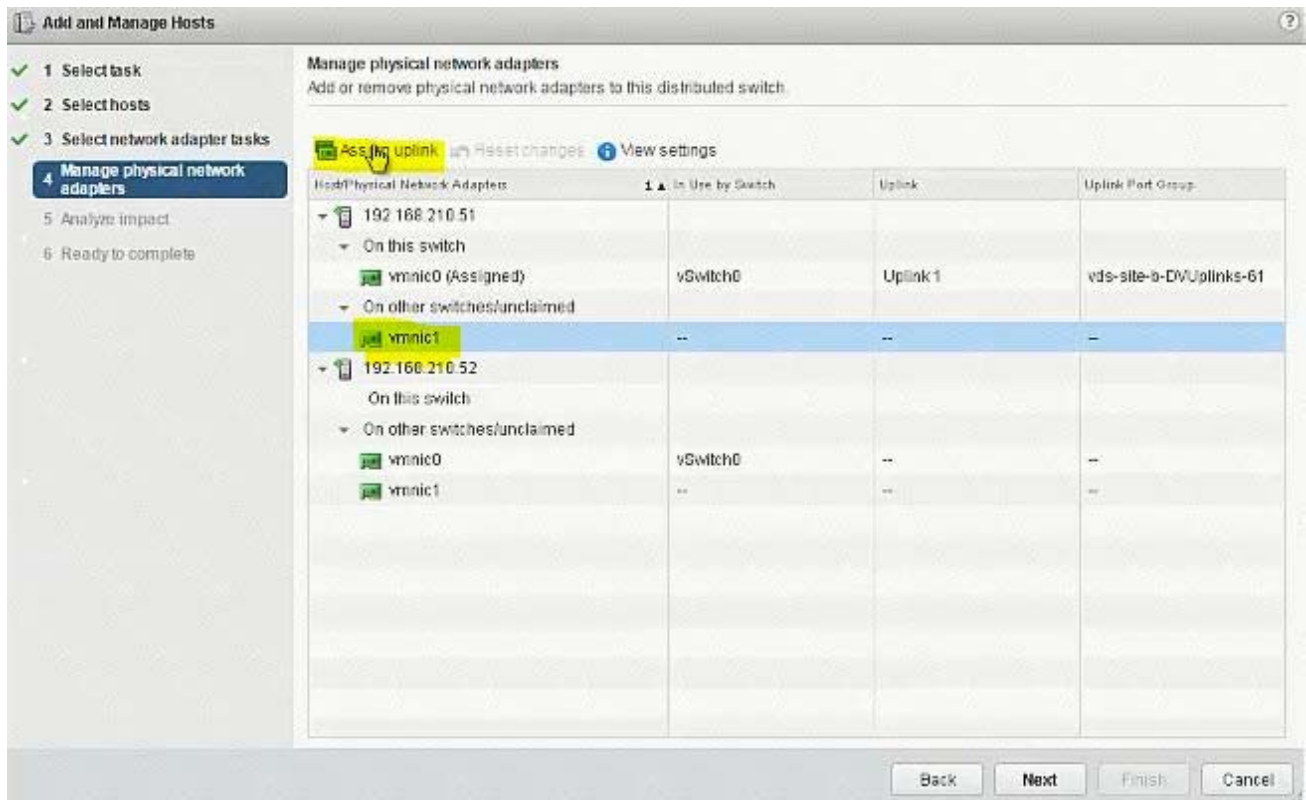
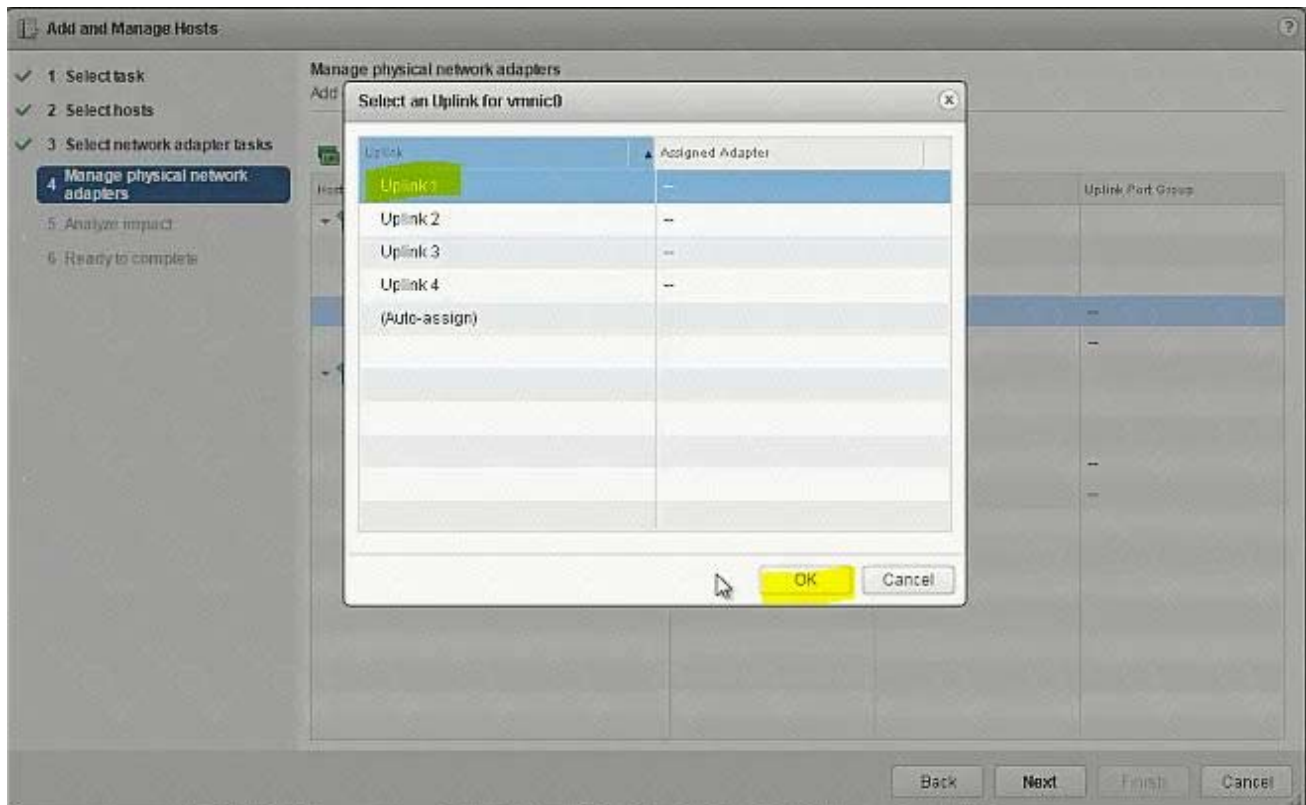


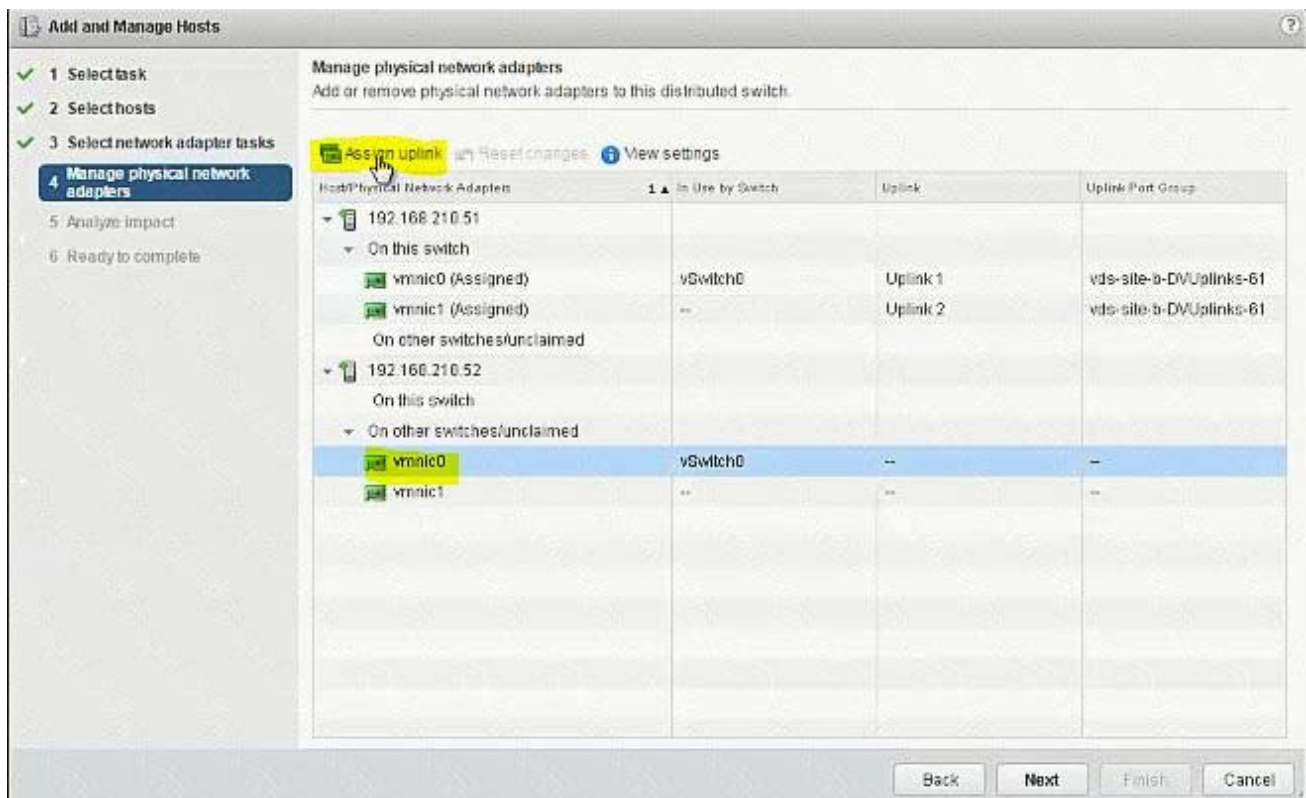
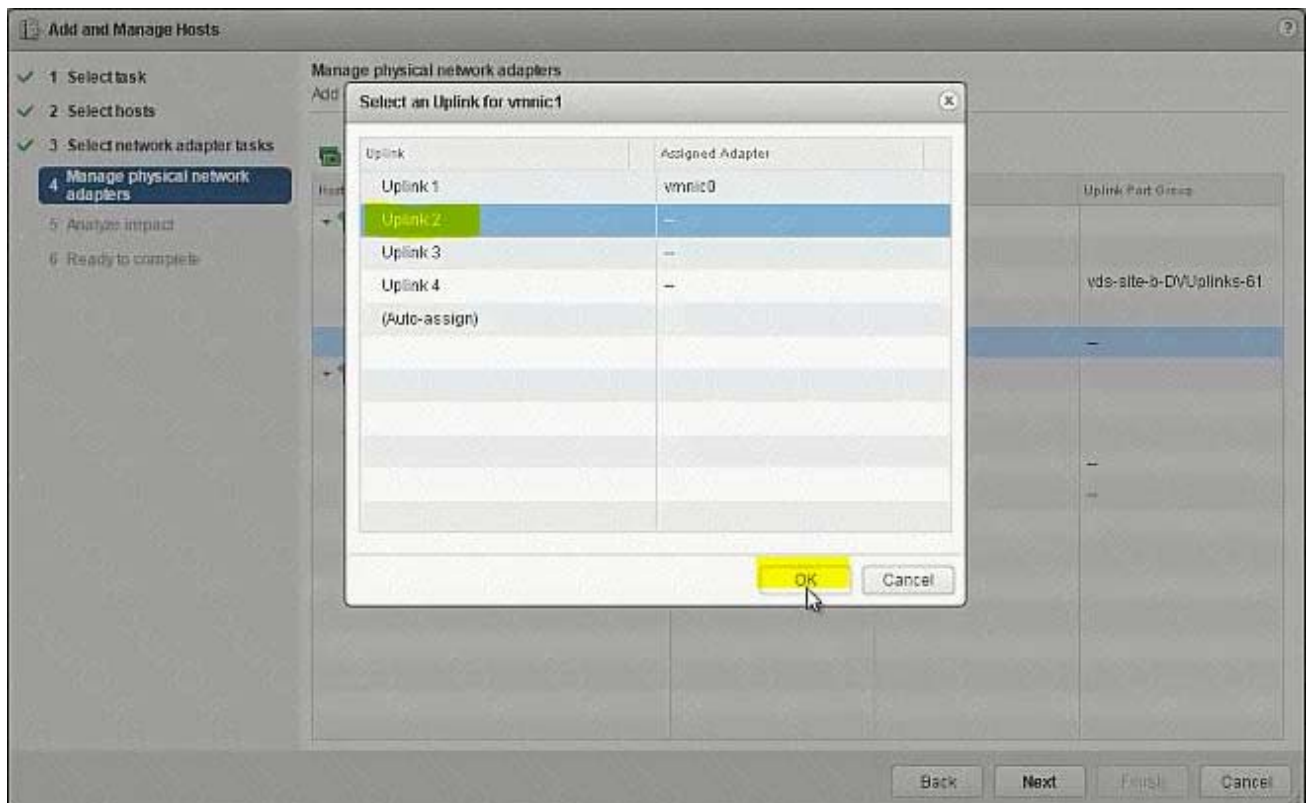




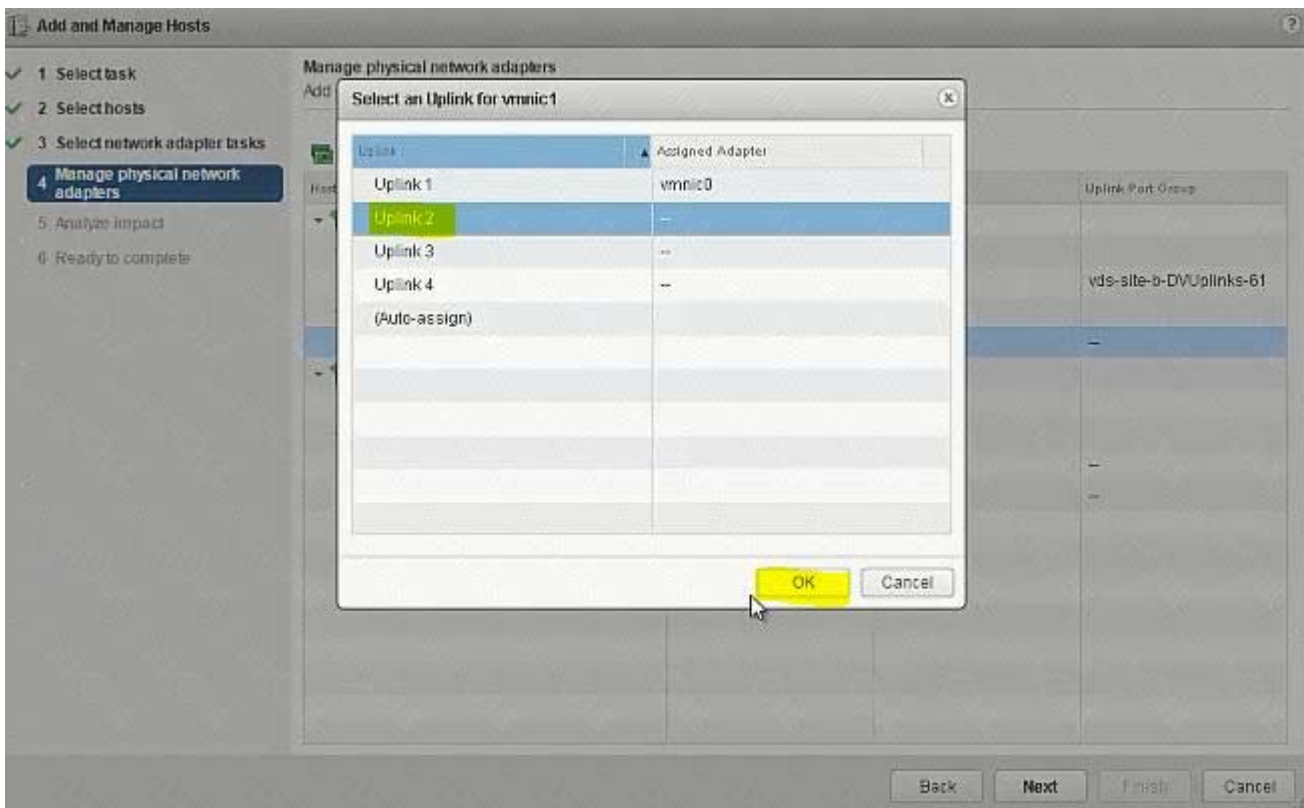
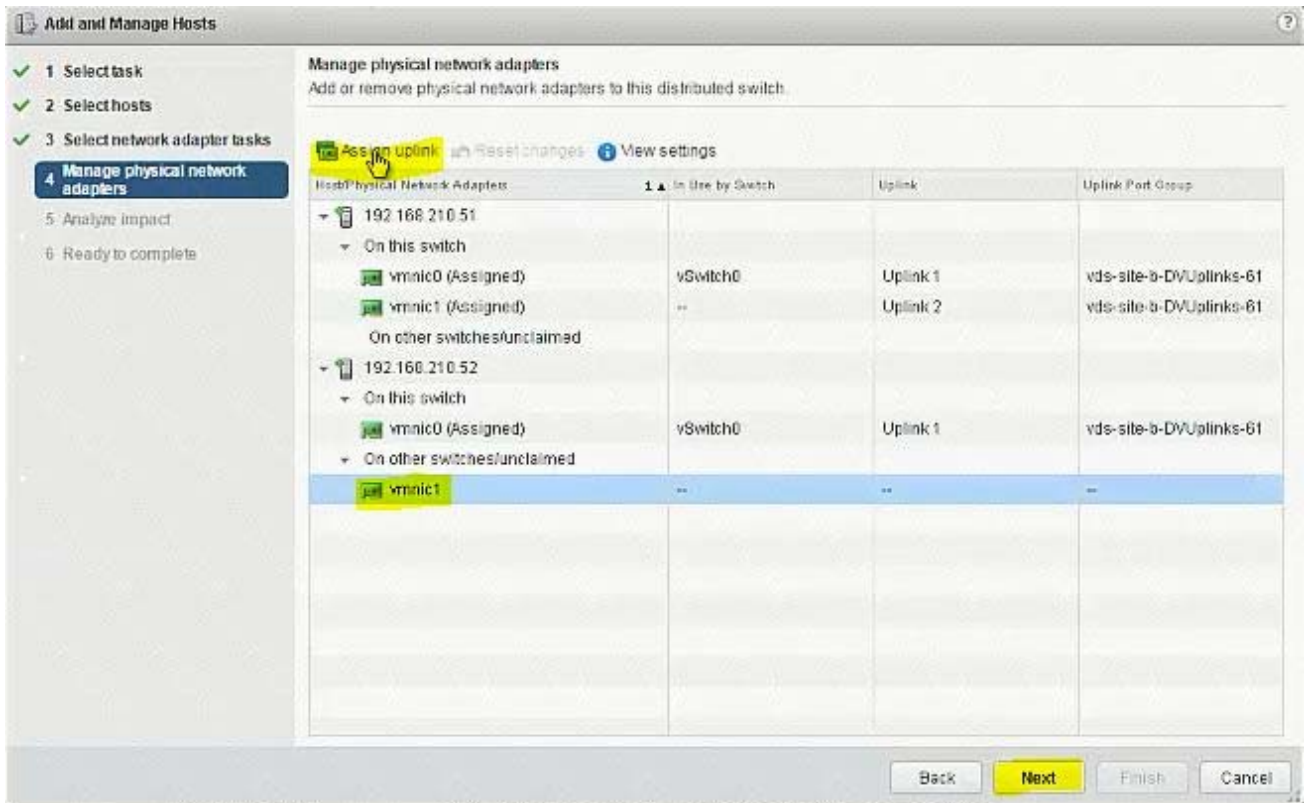


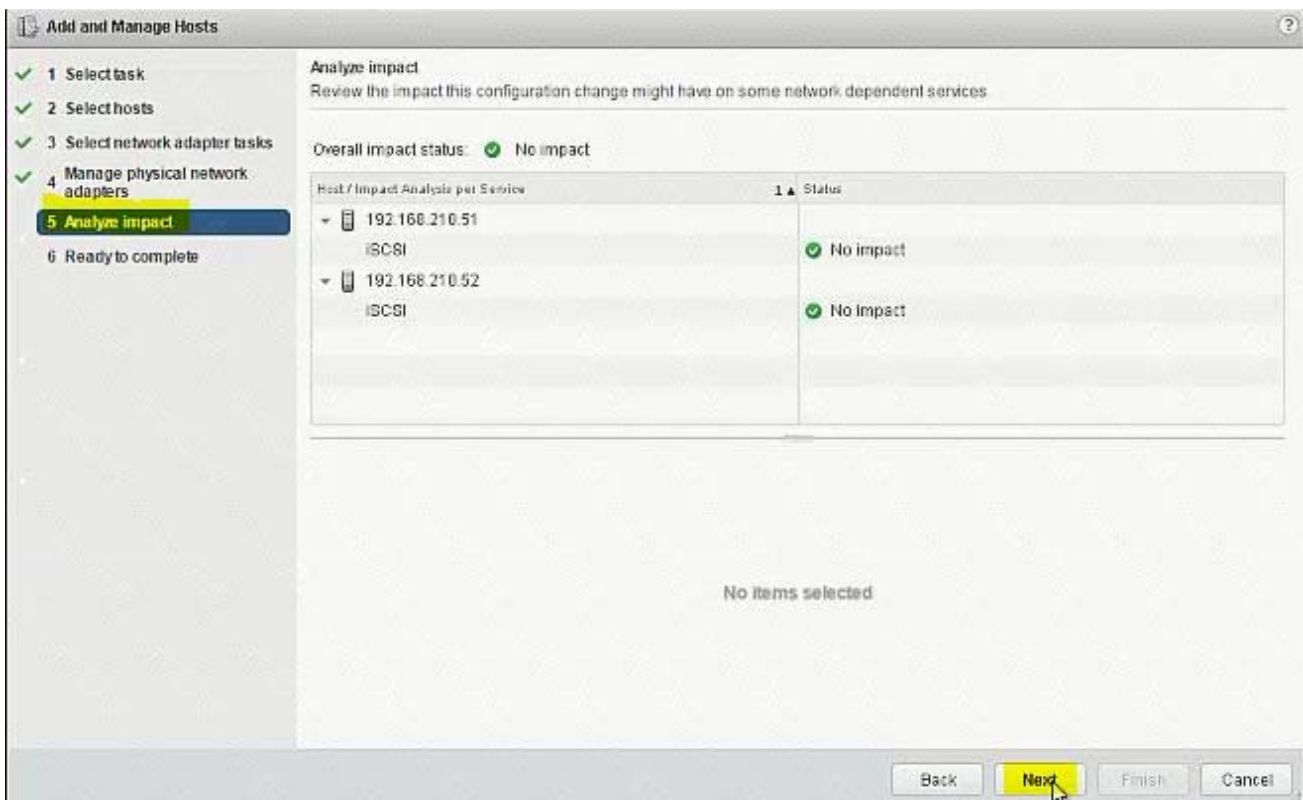
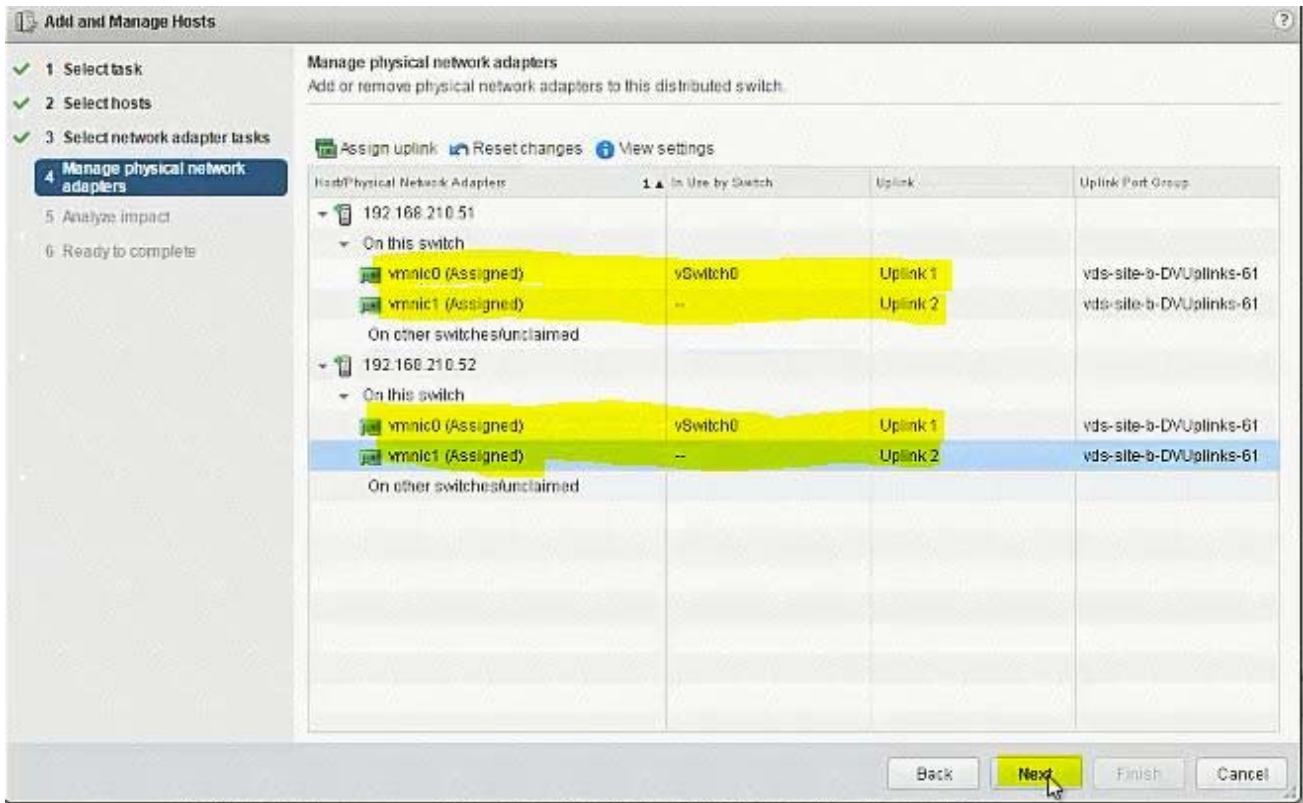


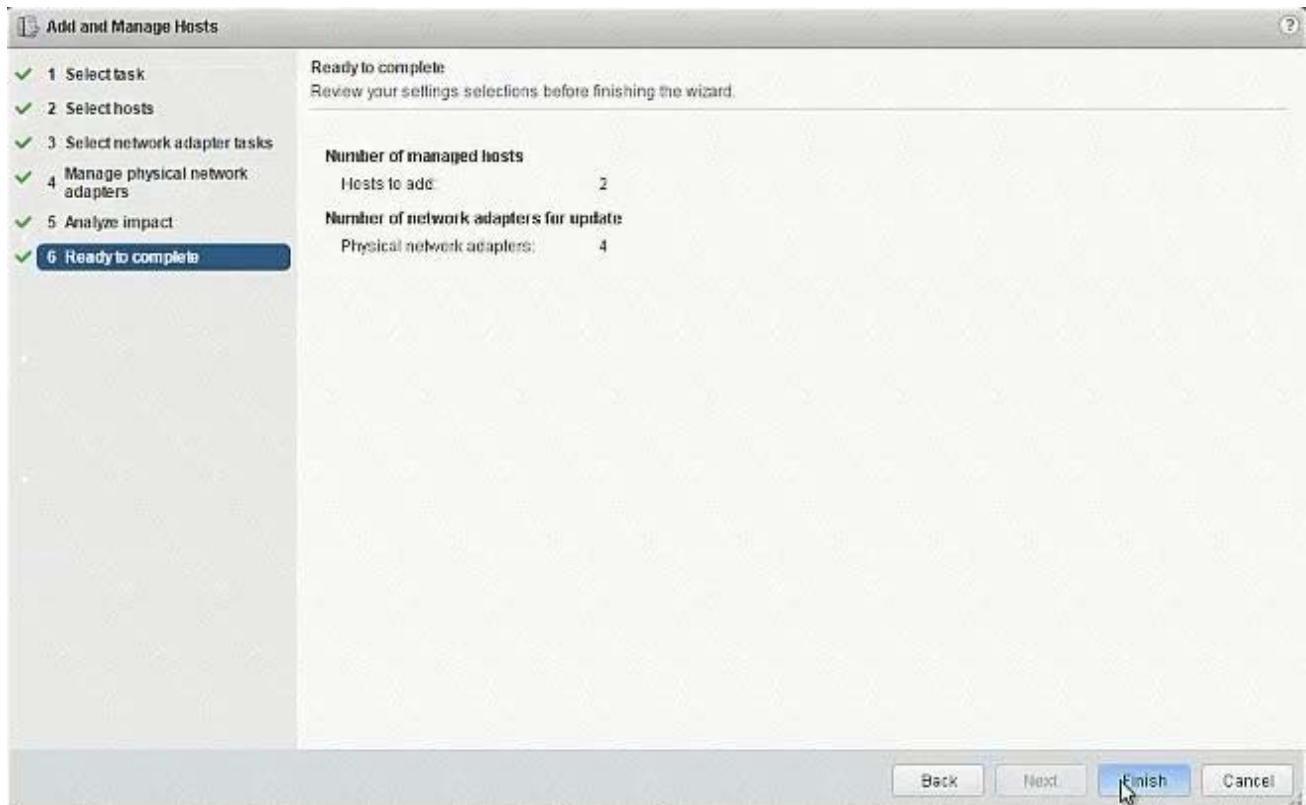












### 3. (Exam Topic 1)

The security team has requested that administrator@corp.local have the ability to fully manage NSX Manager (192.168.210.15) for Site B.

#### Requirements:

vCenter: vcsa-01b.corp.local

Credentials: administrator@vsphere.local / VMware1!

Ensure administrator@corp.local has the ability to fully manage NSX Manager in SiteB.

#### NOTE:

You may have to log out of the web client and back in for 192.168.210.15 to show in web client.

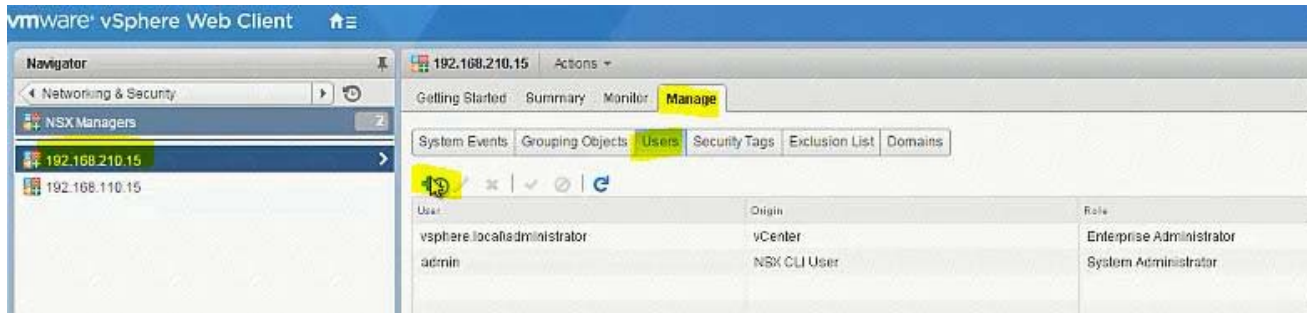
HOL LAB for Practice:

See the explanation part for complete solution.

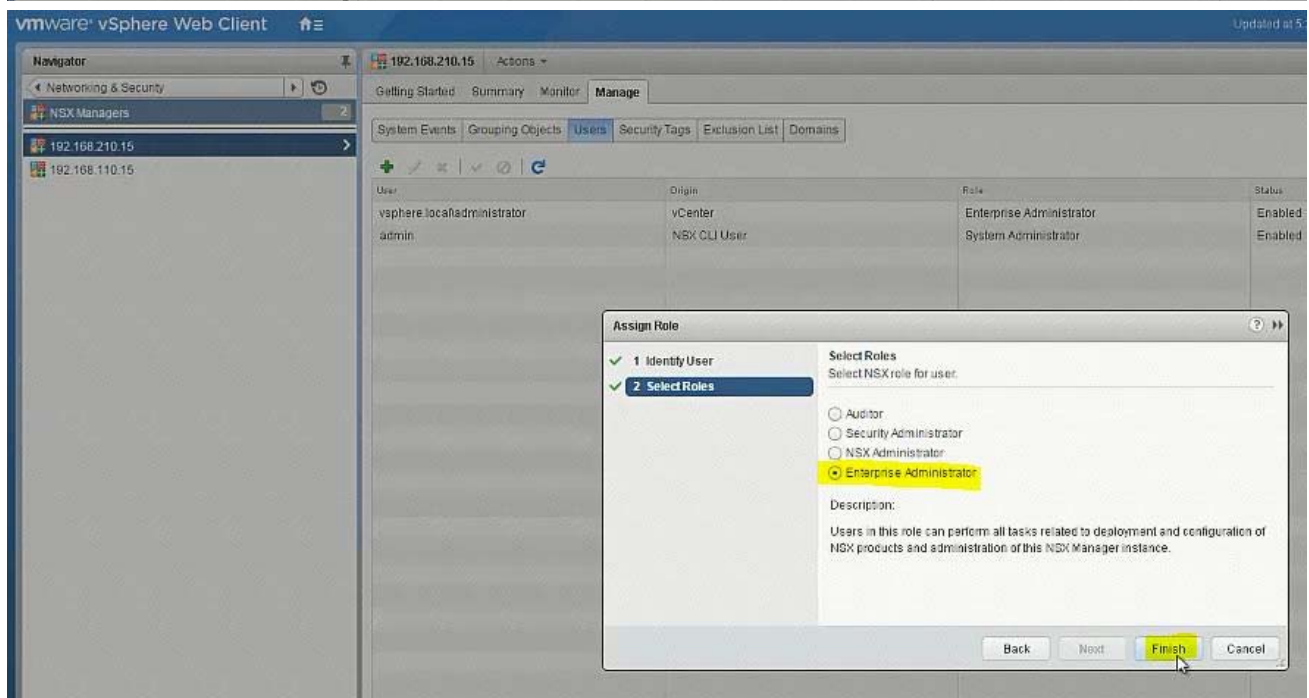
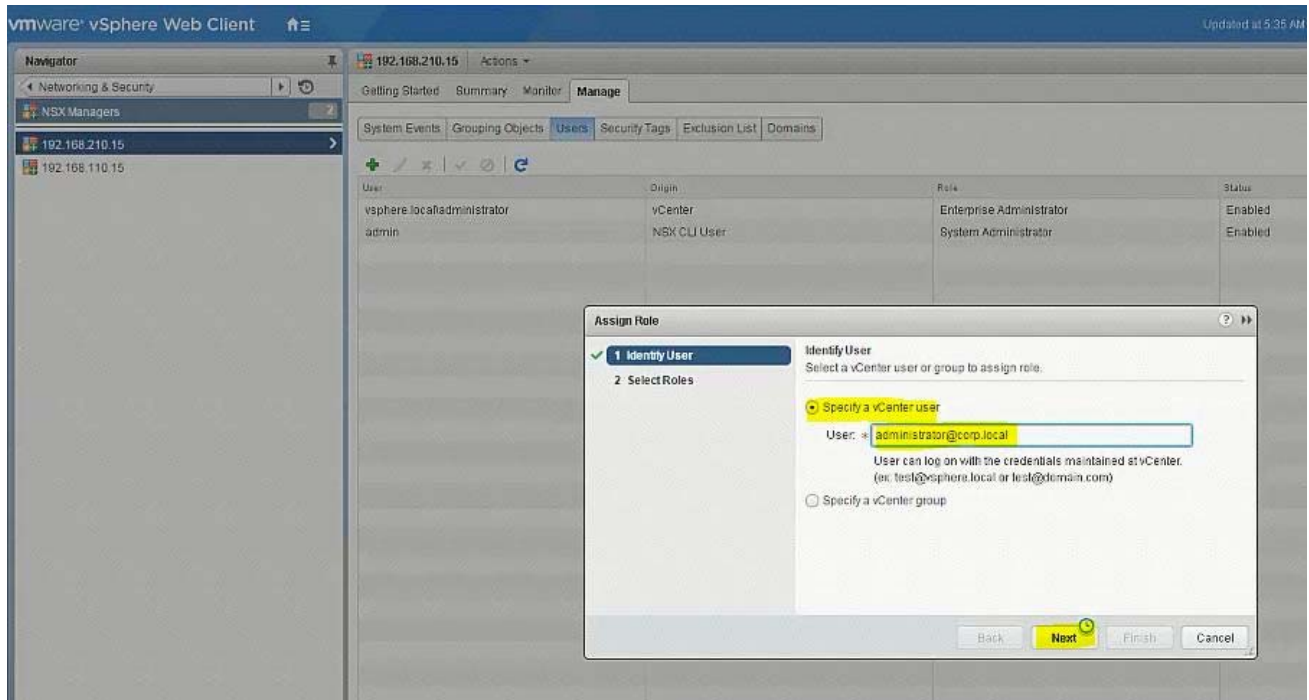
#### Answer:

#### SOLUTION:

NSX Manager in SiteB



[administrator@corp.local](mailto:administrator@corp.local)



go to Nsx manager - b. select Manage Vcenter registration. check if lookup service

is configured if not configured it will the details.

lookup service ip = Nsx Manager - a IP Address

Lookup service port = 7444

Lookup service= https://192.168.110.15:7444/lookupservice/sdk

SSO administrator = administrator@vsphere.local

password = VMware1!

click on ok. click on yes.

**NOTE:** it will show u connected. if not connected. logout and login again

#### 4. (Exam Topic 1)

Create a backup of only the vDS portgroup the NSX controllers utilize along with the NSX Firewall configuration. Also, the security team had identified a missing security policy that needs to be added.

#### Requirements:

vCenter: vcsa-01a.corp.local

Credentials: administrator@vsphere.local / VMware1!

#### Components to backup:

- vDS Portgroup that the controllers utilize.

- NSX Firewall configuration.

- Backup file name: vdsPortGroup-backup-NEW.zip, nsxfw-backup-NEW.xml

- Backup file location: Desktop of the ControlCenter.

#### Security Policy:

File to import: sec-policy-blueprint located on the desktop of the ControlCenter.

- Backup only the vDS portgroup that the NSX Controllers utilize.

- Backup the NSX Firewall configuration.

- Import the sec-policy.blueprint file

Ensure requirements are met.

HOL LAB for Practice:

See the explanation part for complete solution.

#### Answer:

#### SOLUTION:

select Network & Security. select service composer. select 192.168.110.15.

select security policy tab. click on + sign enter name sec-policy-blueprint.

click next 3 times. click finish. select sec-policy-blueprint. click right mouse

button select export configuration. enter name sec-policy-blueprint. click next

select sec-policy-blueprint. click next. click finish. select desktop location.

enter name sec-policy-blueprint. click save. select sec-policy-web and delete it.

Verify NSX Controllers' vDS Portgroup

Vds-mgmt-a\_Management network (under site A vcenter networking)



vmware vSphere Web Client

Navigator

- Home
- vcasa-01a.corp.local
  - DataCenter Site A
    - none
    - VM Network
      - vds-mgmt-edge-a
        - yds-HSA-NEW
        - yds-mgmt-a\_Management network**
        - yds-mgmt-a\_storage network
        - yds-mgmt-a\_transit network
        - yds-mgmt-a\_trunk network
        - yds-mgmt-a\_UPLINK network
        - yds-mgmt-a\_VM network
        - yds-mgmt-a\_vmotion network
        - yds-mgmt-edge-a DVUplinks-36
        - www-dvs-36-virtualwire-10-sid-5008-T8-Dev...
        - www-dvs-36-virtualwire-11-sid-5009-T3-DevD...
        - www-dvs-36-virtualwire-12-sid-5010-T6-Ls-01
        - www-dvs-36-virtualwire-13-sid-5011-Dav-Web...
        - www-dvs-36-virtualwire-14-sid-5012-Dev-App...
        - www-dvs-36-virtualwire-15-sid-5013-Dev-DB...
        - www-dvs-36-virtualwire-16-sid-5014-App01-...
        - www-dvs-36-virtualwire-17-sid-5015-App01-...

vds-mgmt-a\_Management network

Getting Started Summary Monitor **Manage** Related Objects

Settings Alarm Definitions Tags Permissions Network Protocol Profile **Ports**

Port ID	Name	Connectee	Runtime MAC Address	Port Group	DirectPath I/O	State
0		192.168.110.56 -	00:50:56:a3:1f:62	vds-mgmt-a_Man...	--	Link Up
1		192.168.110.58 -	00:50:56:a3:9e:e8	vds-mgmt-a_Man...	--	Link Up
2		192.168.110.57 -	00:50:56:a3:97:a6	vds-mgmt-a_Man...	--	Link Up
3		--	--	vds-mgmt-a_Man...	--	Link Up
4		NSX_Controller_...	00:50:56:91:78:55	vds-mgmt-a_Man...	Inactive	Link Up
5		NSX_Controller_...	00:50:56:91:ea:7c	vds-mgmt-a_Man...	Inactive	Link Up
6		NSX_Controller_...	00:50:56:91:bb:95	vds-mgmt-a_Man...	Inactive	Link Up
7		--	--	vds-mgmt-a_Man...	--	Link Up
108		--	--	vds-mgmt-a_Man...	--	Link Up
109		--	--	vds-mgmt-a_Man...	--	Link Up
110		--	--	vds-mgmt-a_Man...	--	Link Up
111		--	--	vds-mgmt-a_Man...	--	Link Up

Port ID: 4

vmware vSphere Web Client

Navigator

- Home
- vcasa-01a.corp.local
  - DataCenter Site A
    - none
    - VM Network
      - vds-mgmt-edge-a
        - yds-HSA-NEW
        - yds-mgmt-a\_Management network**
        - yds-mgmt-a\_storage network
        - yds-mgmt-a\_transit network
        - yds-mgmt-a\_trunk network
        - yds-mgmt-a\_UPLINK network
        - yds-mgmt-a\_VM network
        - yds-mgmt-a\_vmotion network
        - yds-mgmt-edge-a DVUplinks-36
        - www-dvs-36-virtualwire-10-sid-5008-T8-Dev...
        - www-dvs-36-virtualwire-11-sid-5009-T3-DevD...
        - www-dvs-36-virtualwire-12-sid-5010-T6-Ls-01
        - www-dvs-36-virtualwire-13-sid-5011-Dav-Web...
        - www-dvs-36-virtualwire-14-sid-5012-Dev-App...
        - www-dvs-36-virtualwire-15-sid-5013-Dev-DB...
        - www-dvs-36-virtualwire-16-sid-5014-App01-...
        - www-dvs-36-virtualwire-17-sid-5015-App01-...

vds-mgmt-a\_Management network

Getting Started Summary Monitor **Manage** Related Objects

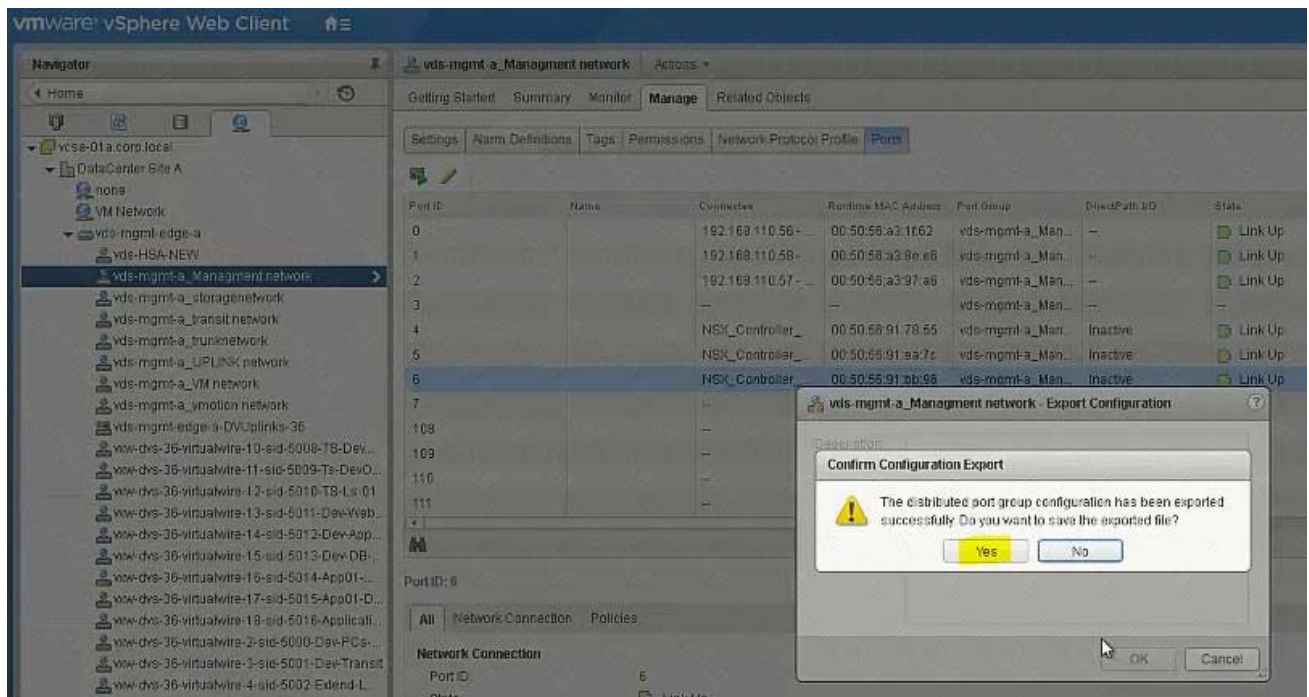
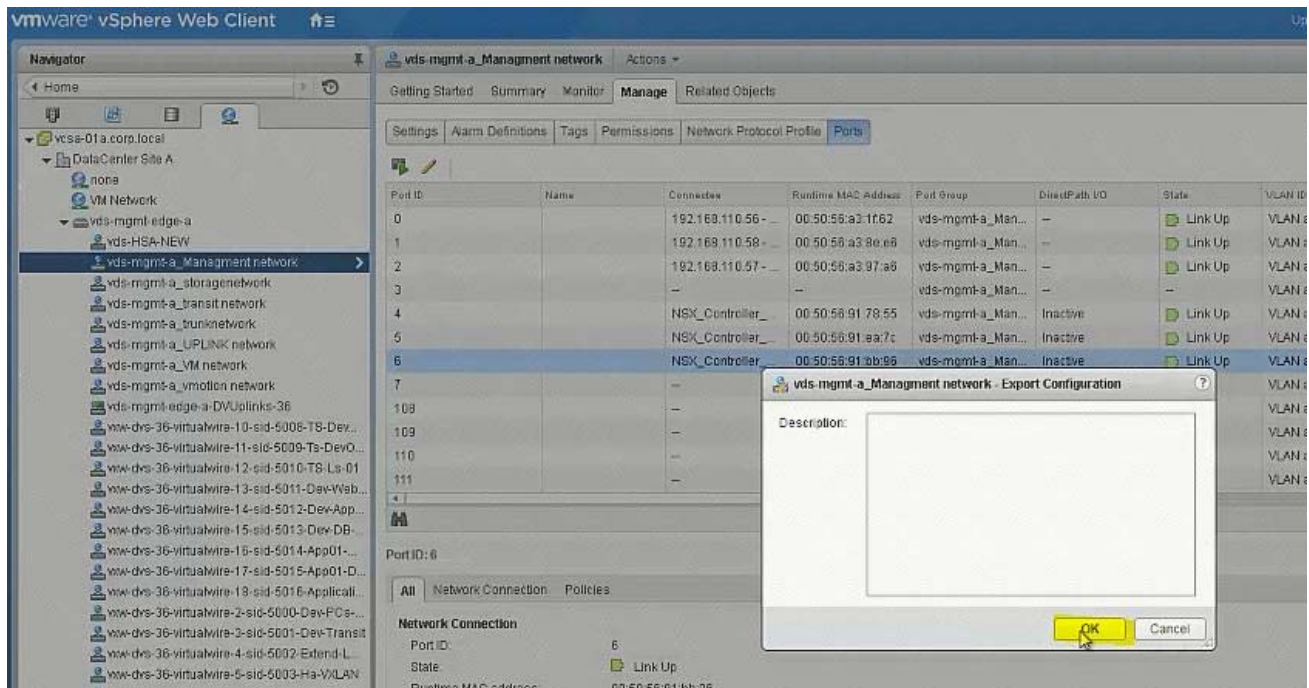
Settings Alarm Definitions Tags Permissions Network Protocol Profile **Ports**

Port ID	Name	Connectee	Runtime MAC Address	Port Group	DirectPath I/O	State	VLAN
0		192.168.110.56 -	00:50:56:a3:1f:62	vds-mgmt-a_Man...	--	Link Up	V/L
1		192.168.110.58 -	00:50:56:a3:9e:e8	vds-mgmt-a_Man...	--	Link Up	V/L
2		192.168.110.57 -	00:50:56:a3:97:a6	vds-mgmt-a_Man...	--	Link Up	V/L
3		--	--	vds-mgmt-a_Man...	--	Link Up	V/L
4		NSX_Controller_...	00:50:56:91:78:55	vds-mgmt-a_Man...	Inactive	Link Up	V/L
5		NSX_Controller_...	00:50:56:91:ea:7c	vds-mgmt-a_Man...	Inactive	Link Up	V/L
6		NSX_Controller_...	00:50:56:91:bb:95	vds-mgmt-a_Man...	Inactive	Link Up	V/L
7		--	--	vds-mgmt-a_Man...	--	Link Up	V/L
108		--	--	vds-mgmt-a_Man...	--	Link Up	V/L
109		--	--	vds-mgmt-a_Man...	--	Link Up	V/L
110		--	--	vds-mgmt-a_Man...	--	Link Up	V/L
111		--	--	vds-mgmt-a_Man...	--	Link Up	V/L

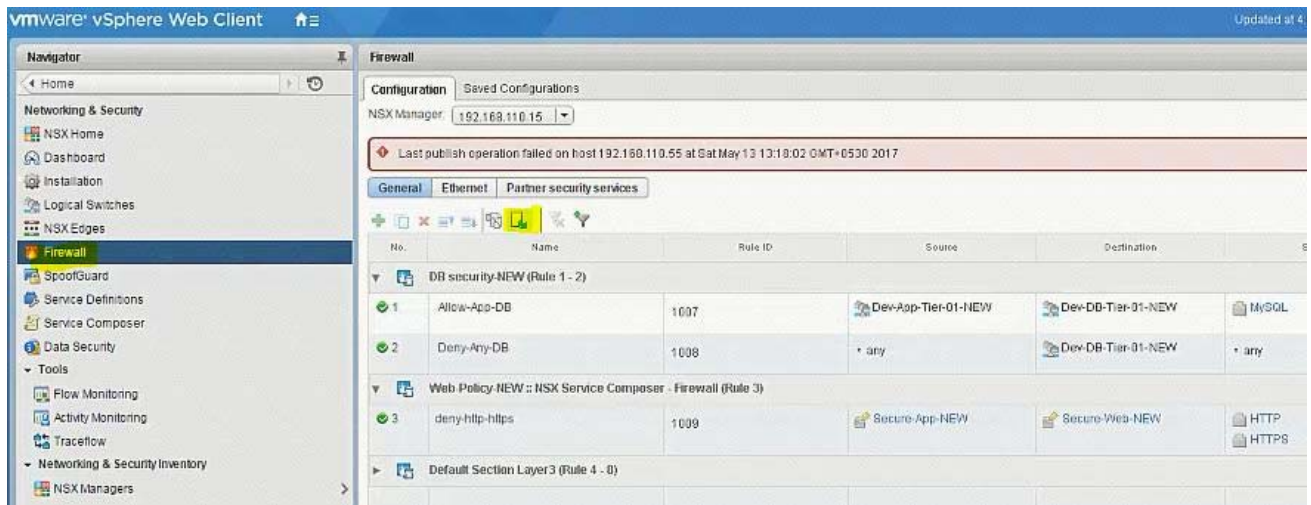
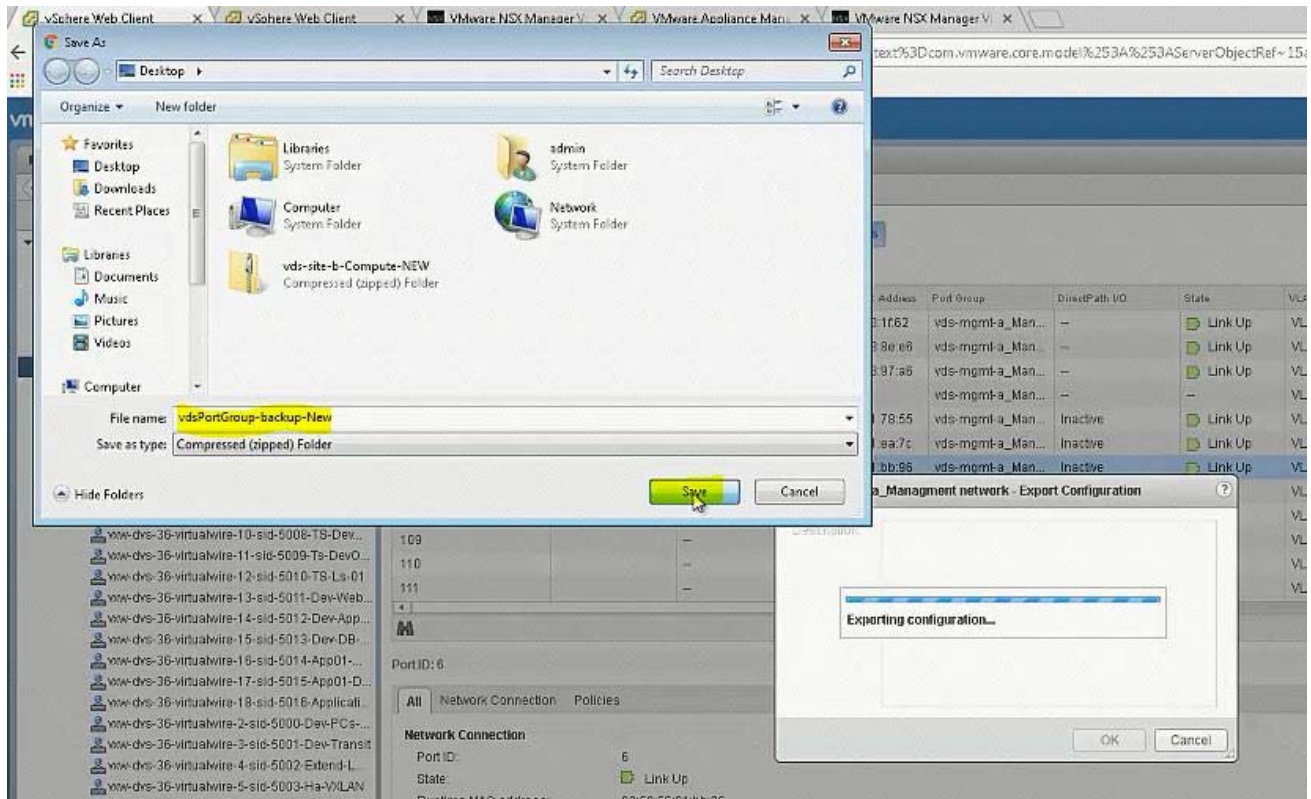
Port ID: 6

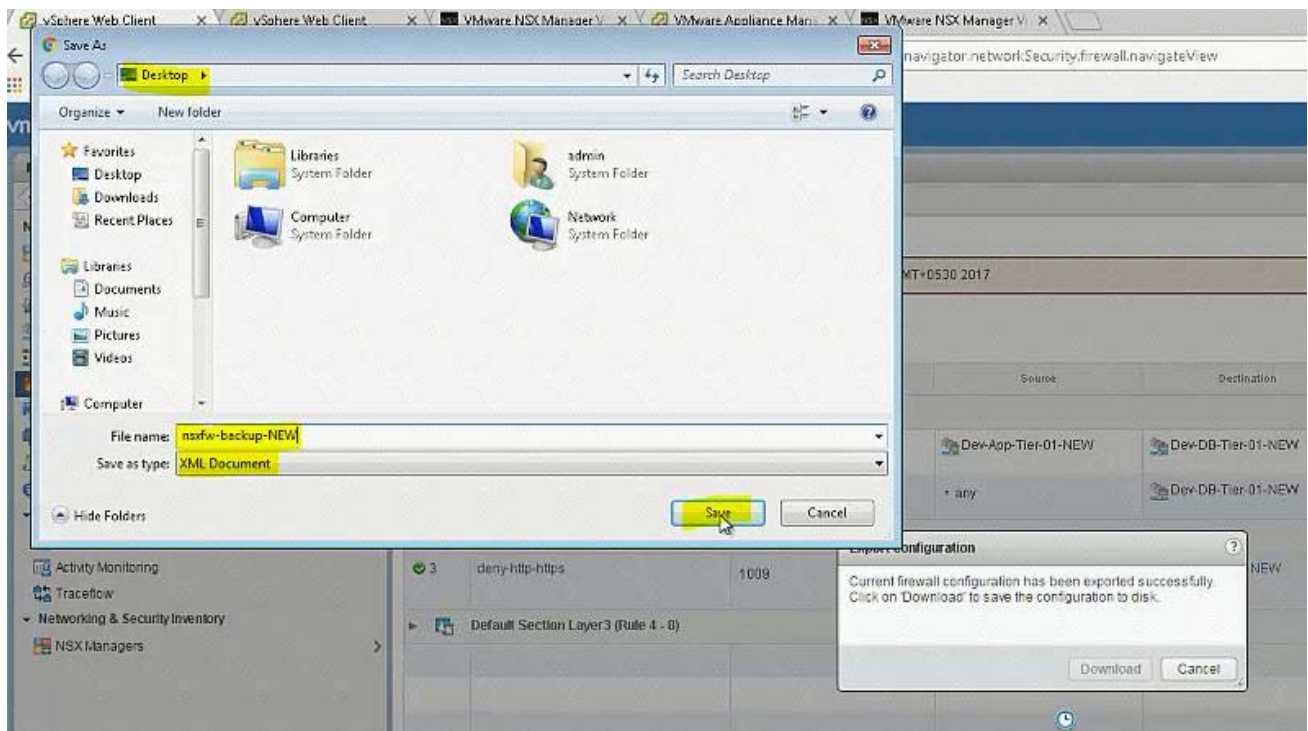
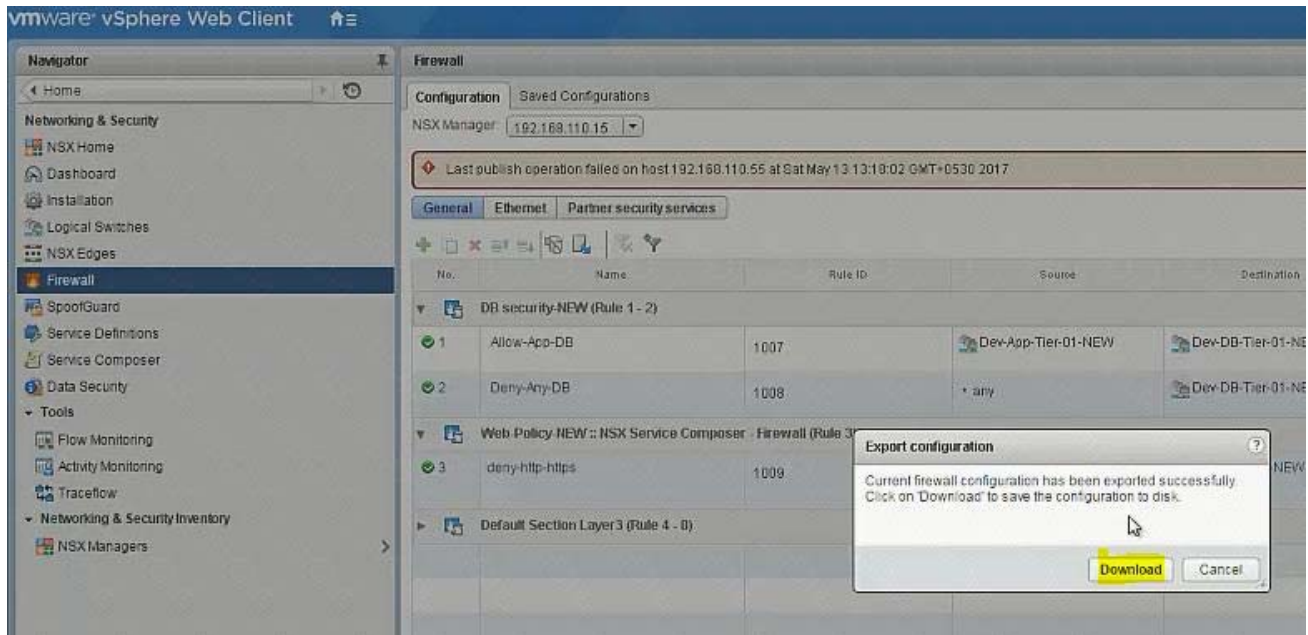
Actions - vds-mgmt-a\_Management network

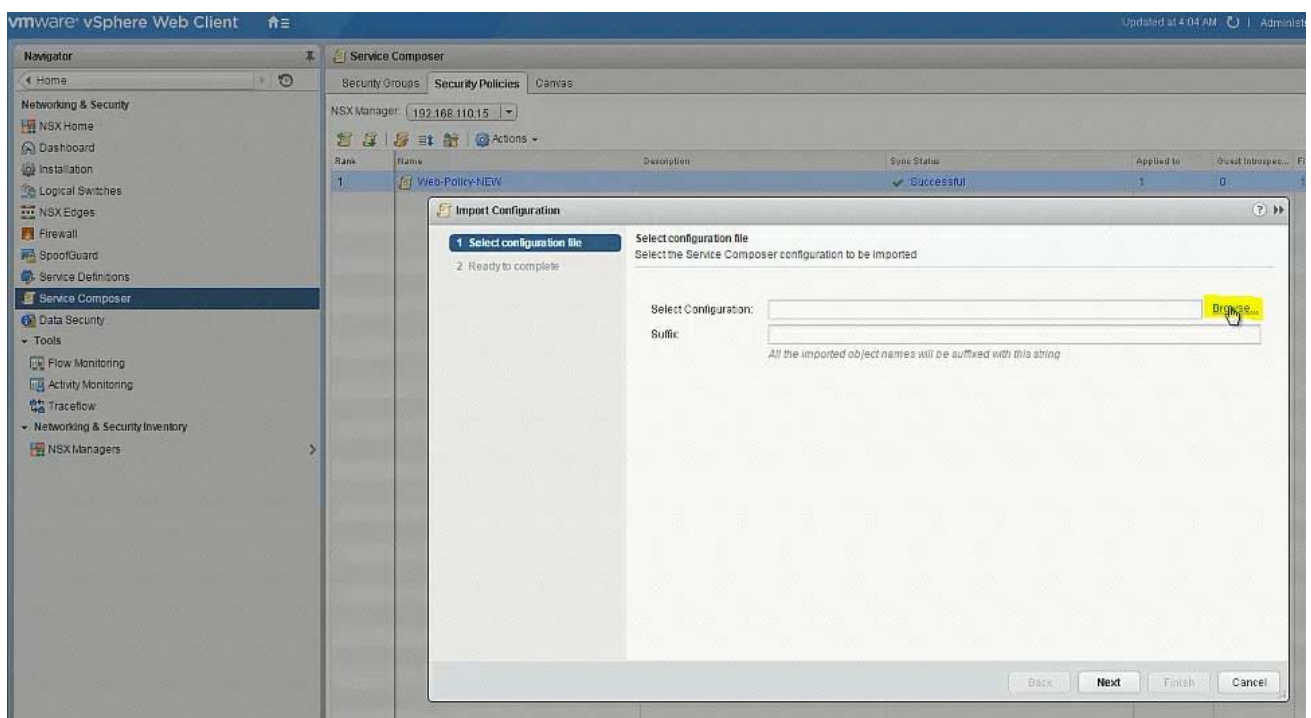
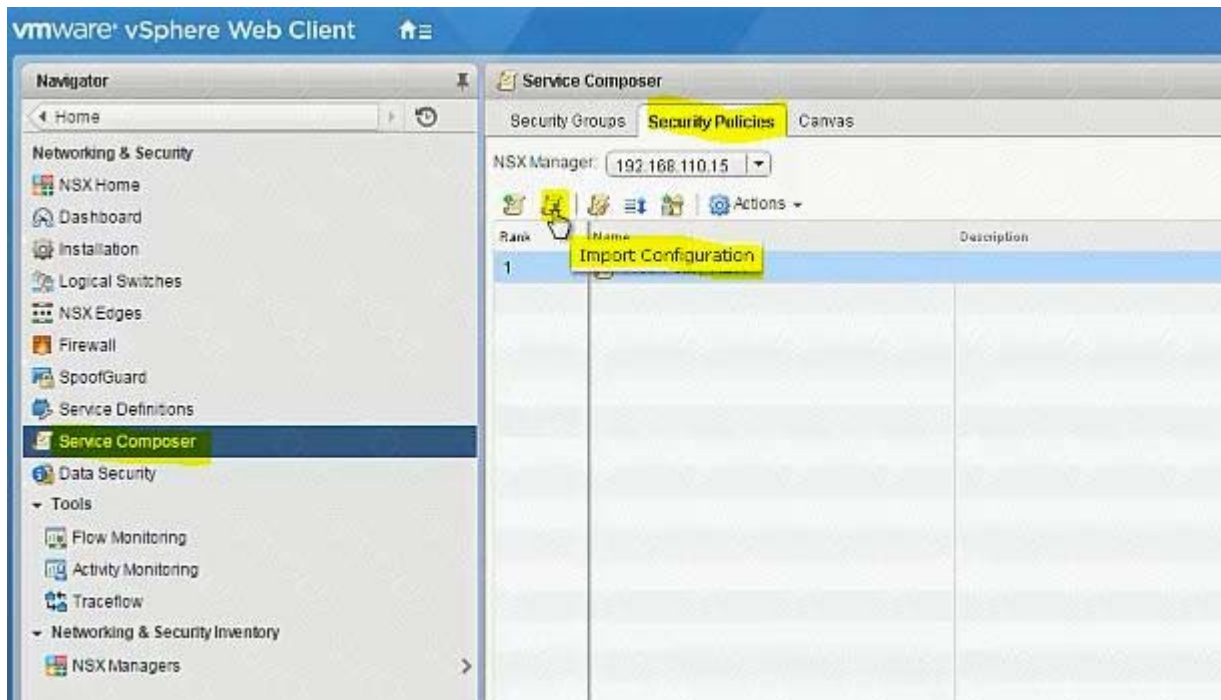
- Edit Settings
- Export Configuration**
- Restore Configuration...
- Rename...
- Tags
- Add Permission...
- Alarms
- Delete



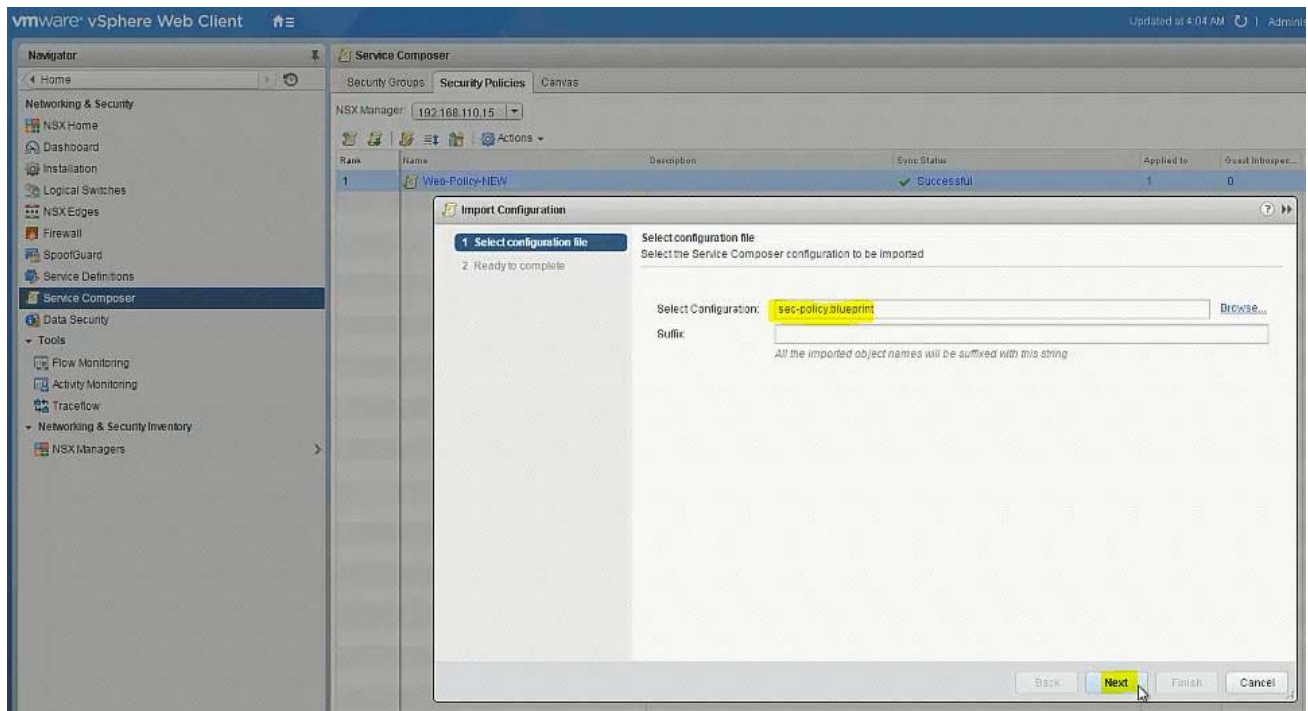
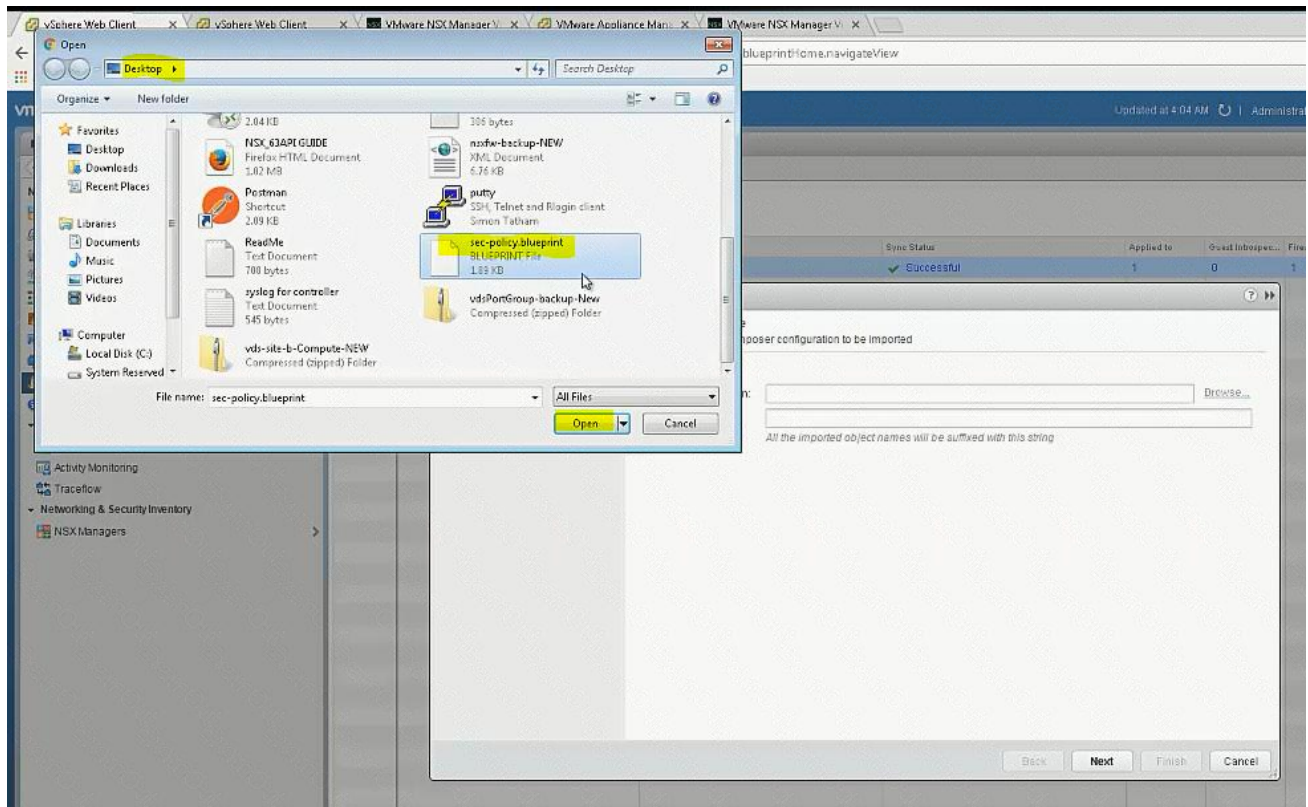


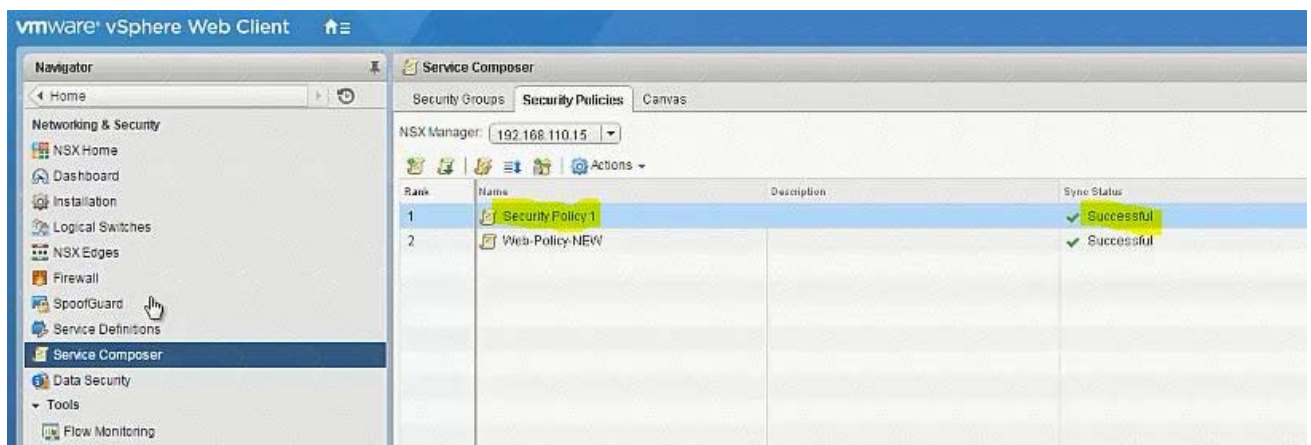
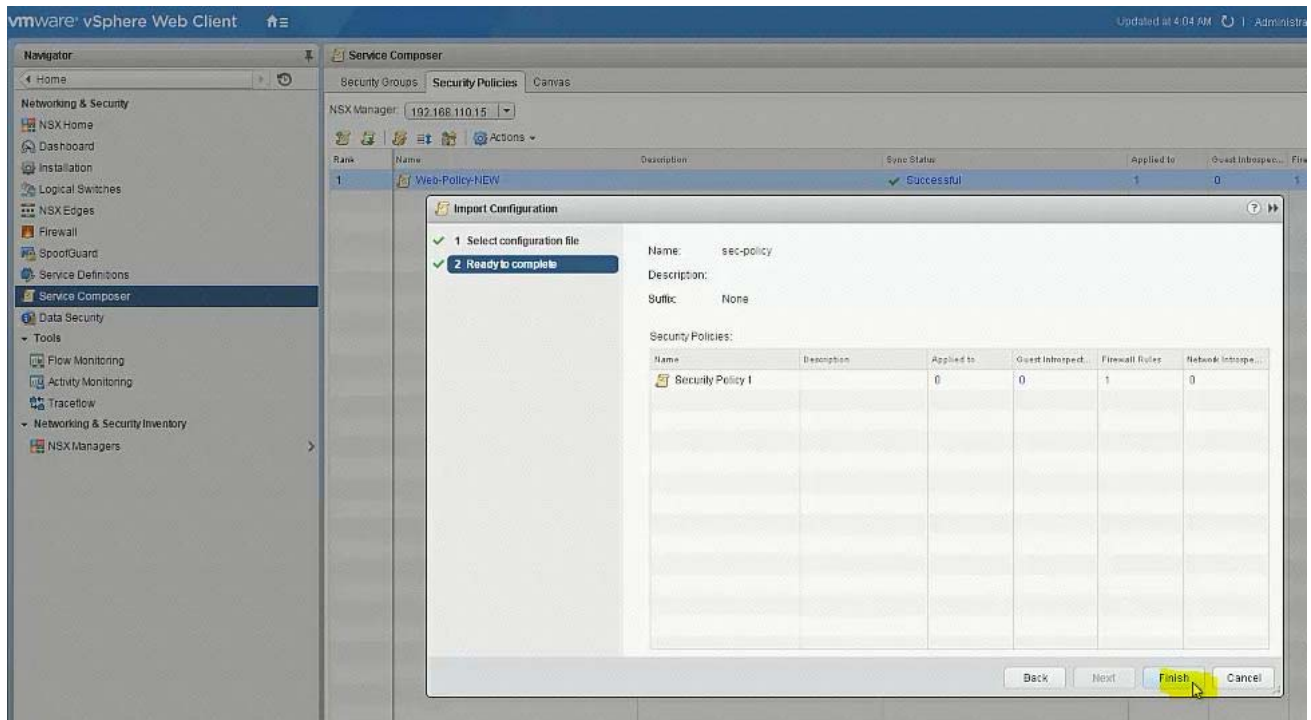












## 5. (Exam Topic 1)

Routing through TS-Edge-01 is not working. The service provider (SP) has confirmed their configuration is correct.

### Requirements:

vCenter: vcsa01a.corp.local

Credential: administrator@vsphere.local / VMware1!

Edge: TS-Edge-01

Credential: admin / VMware1!VMware1!

Problem Edge: TS-Edge01

Local IP Address: 192.168.100.202

### SP provided configuration:

Area ID: 10

Type: Normal

Authentication: None

Ensure the OSPF session is established.

Ensure all learned OSPF routes appear.

Copy OSPF routing table information and output to file on ControlCenter Desktop named TS-Edge-01\_OSPF.txt

### NOTE:

Do not use static route or configure Default Gateway on any Edge.

HOL LAB for Practice:

See the explanation part for complete solution.

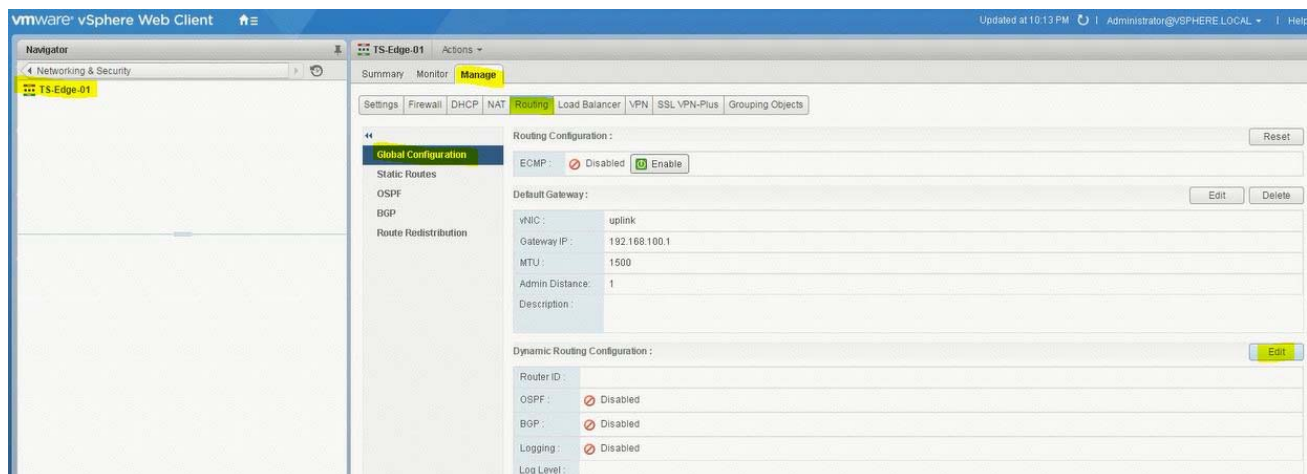
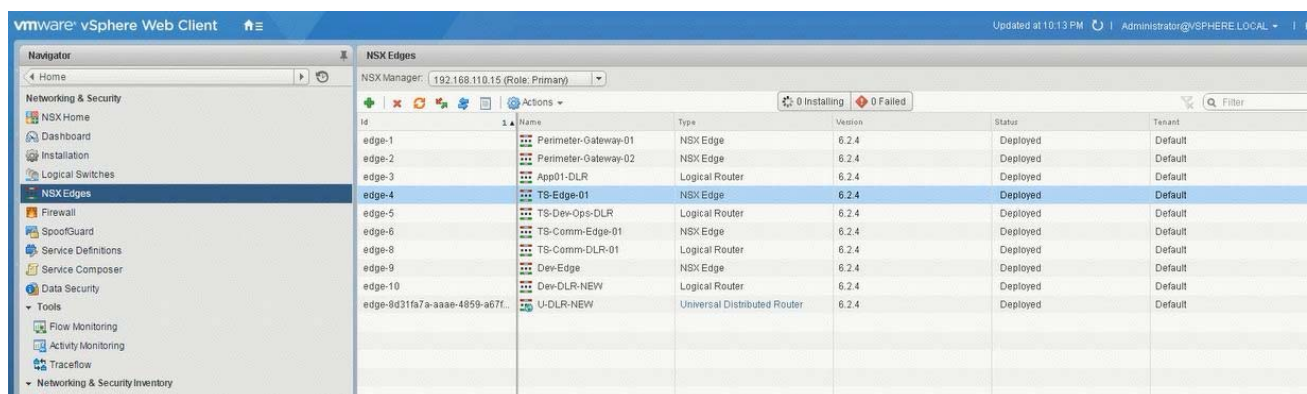
### Answer:

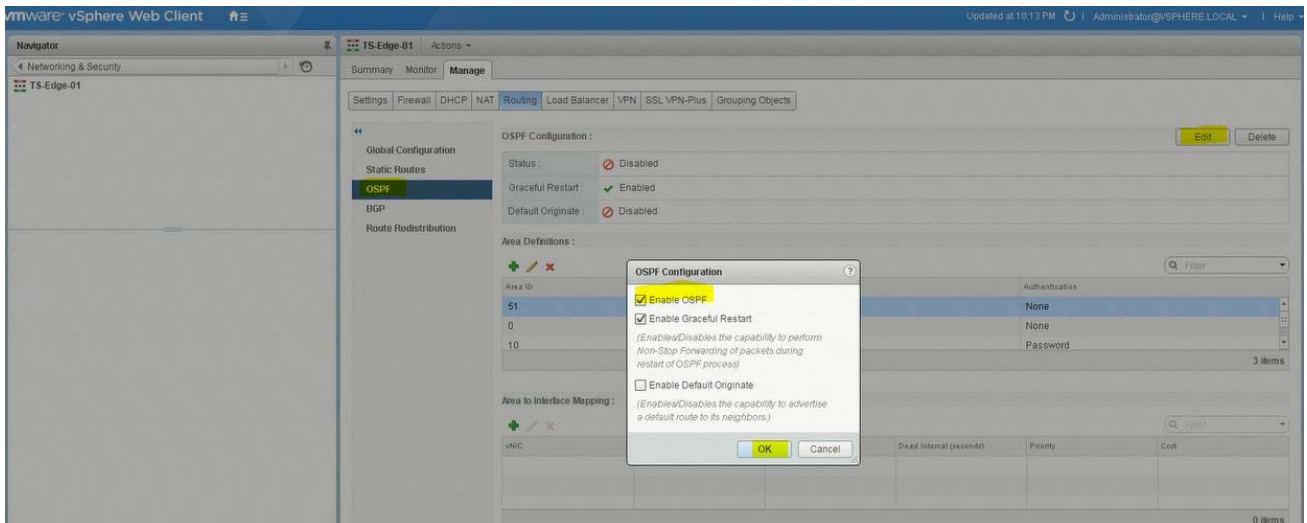
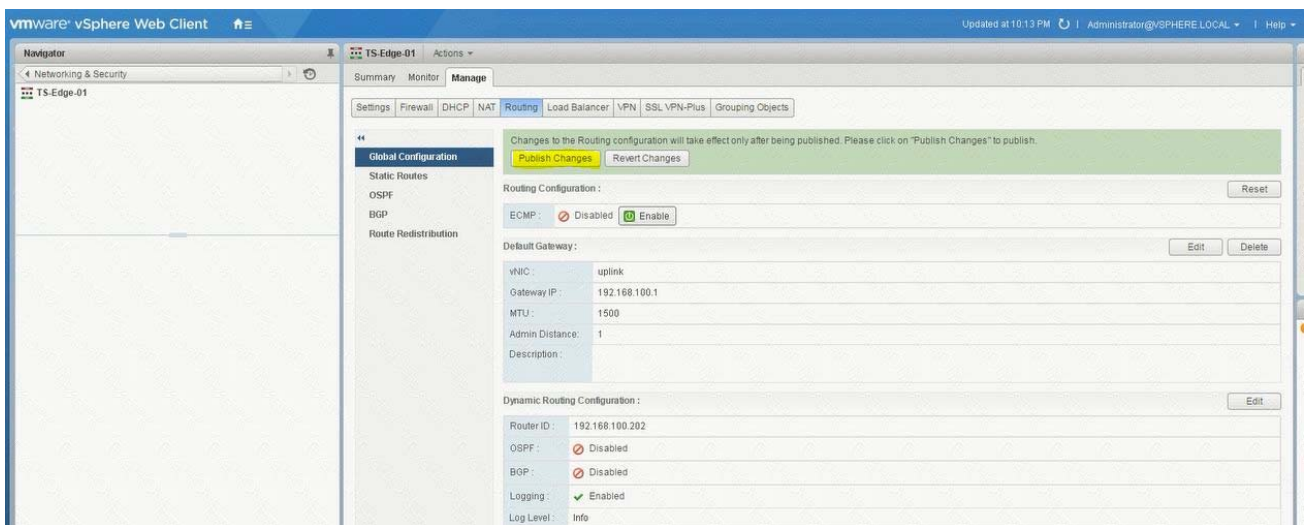
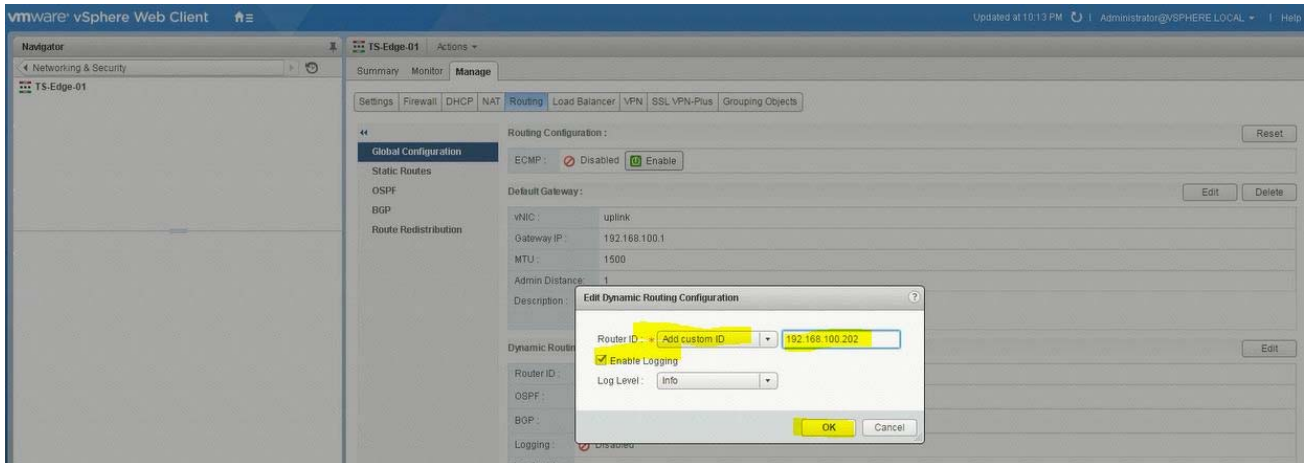
### SOLUTION:

(1) select Home. select Network & Security. select NsX Edge. select Nsx Manager-a.

select TS-EDGE-01. select manage tab and select settings.

select interface. check ip address and mask of the vnic.







**TS-Edge-01** Actions ▾

Summary Monitor **Manage**

Settings Firewall DHCP NAT **Routing** Load Balancer VPN SSL VPN-Plus Grouping Objects

Global Configuration  
Static Routes  
**OSPF**  
BGP  
Route Redistribution

Changes to the Routing configuration will take effect only after being published. Please click on "Publish Changes" to publish.  
[Publish Changes](#) [Revert Changes](#)

OSPF Configuration : [Edit](#) [Delete](#)

Status : ☒ Enabled  
Graceful Restart : ☒ Enabled  
Default Originate : ☐ Disabled

Area Definitions :

Area ID	Type	Authentication
10	NSSA	Password

3 Items

Area to Interface Mapping :

vNIC	Area ID	Hello Interval (seconds)	Dead Interval (seconds)	Priority	Cost
------	---------	--------------------------	-------------------------	----------	------

0 Items

**TS-Edge-01** Actions ▾

Summary Monitor **Manage**

Settings Firewall DHCP NAT **Routing** Load Balancer VPN SSL VPN-Plus Grouping Objects

Global Configuration  
Static Routes  
**OSPF**  
BGP  
Route Redistribution

OSPF Configuration : [Edit](#) [Delete](#)

Status : ☒ Enabled  
Graceful Restart : ☒ Enabled  
Default Originate : ☐ Disabled

Area Definitions :

Area ID	Type	Authentication
51		None
0		None
10	Normal	None

3 Items

Area to Interface Mapping :

vNIC	Area ID	Hello Interval (seconds)	Dead Interval (seconds)	Priority	Cost
------	---------	--------------------------	-------------------------	----------	------

0 Items

**Edit Area Definition**

Area ID : 10  
Type : Normal  
Authentication : None  
Value :  
[OK](#) [Cancel](#)

The top screenshot shows the Mikrotik WinBox interface for TS-Edge-01. The 'Routing' tab is selected, and the 'OSPF' configuration page is displayed. The 'OSPF Configuration' section shows 'Status' as 'Enabled', 'Graceful Restart' as 'Enabled', and 'Default Originate' as 'Disabled'. The 'Area Definitions' table shows one entry: Area ID 51, Type NSSA, Authentication None. The 'Area to Interface Mapping' table is empty.

The bottom screenshot shows the same interface after adding a new area. The 'Area Definitions' table now has three entries: Area ID 51 (NSSA), Area ID 0 (Normal), and Area ID 10 (Normal). The 'Area to Interface Mapping' table is still empty.

**OSPF Configuration:**

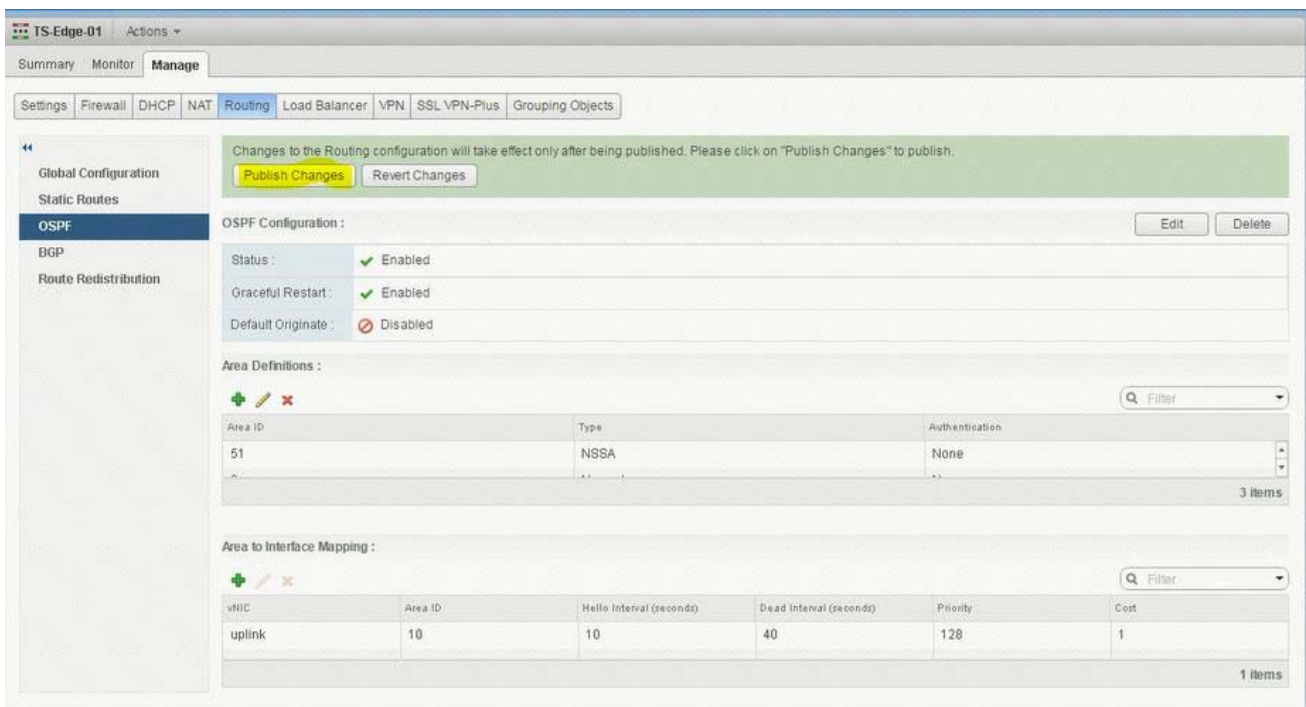
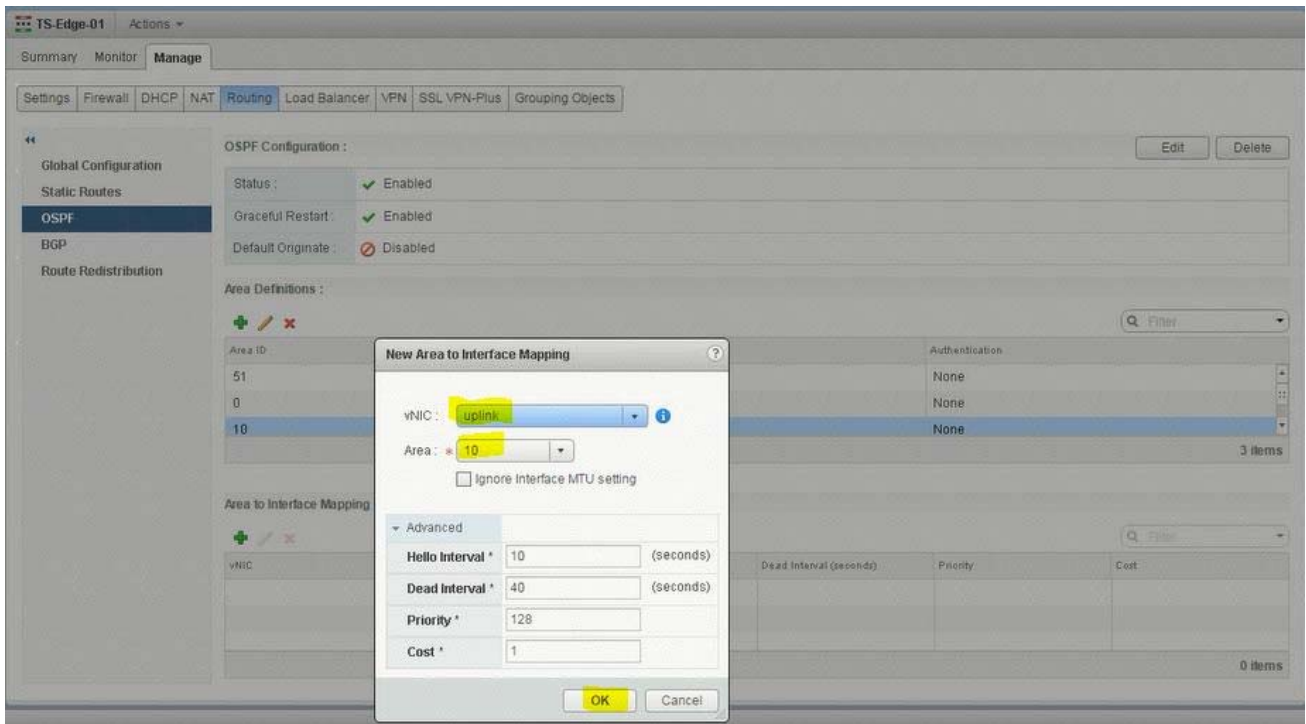
- Status: ☒ Enabled
- Graceful Restart: ☒ Enabled
- Default Originate: ☐ Disabled

**Area Definitions:**

Area ID	Type	Authentication
51	NSSA	None
0	Normal	None
10	Normal	None

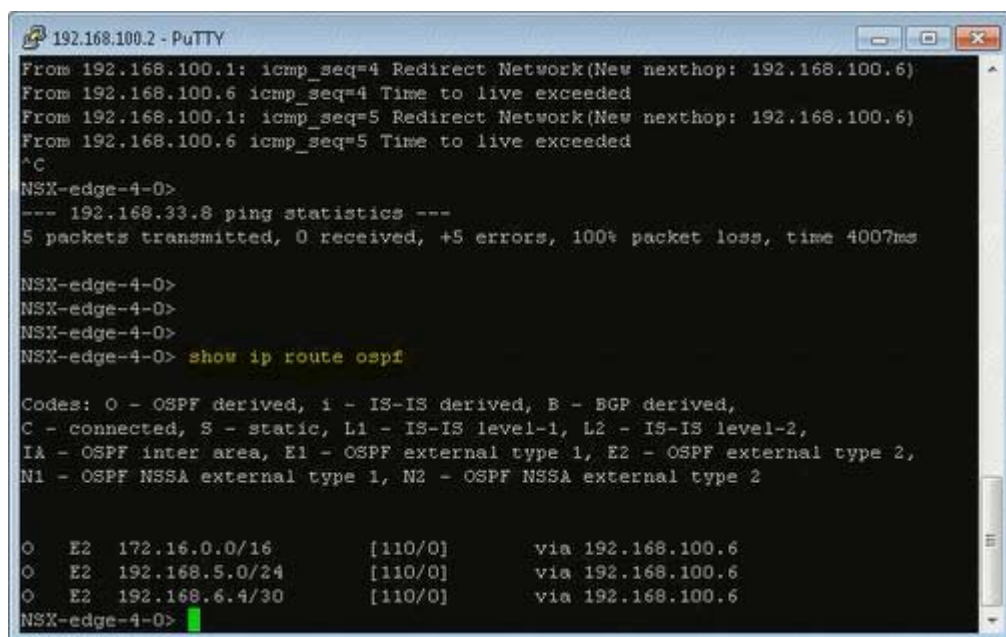
**Area to Interface Mapping:**

vNIC	Area ID	Hello Interval (seconds)	Dead Interval (seconds)	Priority	Cost



open putty. enter ip address 192.168.100.202.

enter command show ip route ospf. copy the ouput and save in a text file name TS-Edge-01.txt.



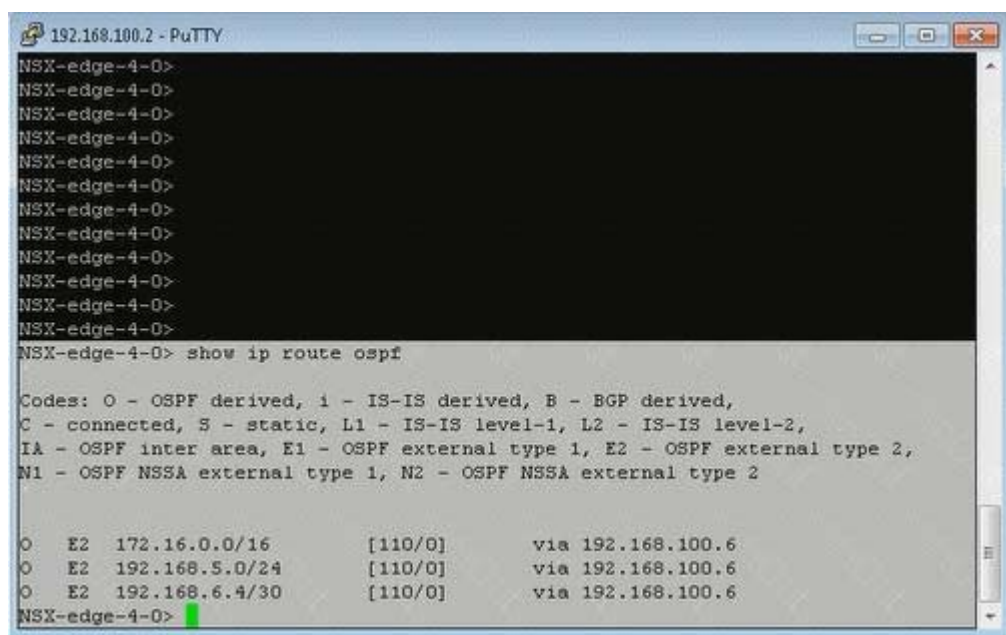
```
192.168.100.2 - PuTTY
From 192.168.100.1: icmp_seq=4 Redirect Network(New nexthop: 192.168.100.6)
From 192.168.100.6 icmp_seq=4 Time to live exceeded
From 192.168.100.1: icmp_seq=5 Redirect Network(New nexthop: 192.168.100.6)
From 192.168.100.6 icmp_seq=5 Time to live exceeded
^C
NSX-edge-4-0>
--- 192.168.33.8 ping statistics ---
5 packets transmitted, 0 received, +5 errors, 100% packet loss, time 4007ms

NSX-edge-4-0>
NSX-edge-4-0>
NSX-edge-4-0>
NSX-edge-4-0> show ip route ospf

Codes: O - OSPF derived, i - IS-IS derived, B - BGP derived,
C - connected, S - static, L1 - IS-IS level-1, L2 - IS-IS level-2,
IA - OSPF inter area, E1 - OSPF external type 1, E2 - OSPF external type 2,
N1 - OSPF NSSA external type 1, N2 - OSPF NSSA external type 2

O E2 172.16.0.0/16 [110/0] via 192.168.100.6
O E2 192.168.5.0/24 [110/0] via 192.168.100.6
O E2 192.168.6.4/30 [110/0] via 192.168.100.6
NSX-edge-4-0>
```

Copy and save OSPF route table in notepad.



```
192.168.100.2 - PuTTY
NSX-edge-4-0>
NSX-edge-4-0>
NSX-edge-4-0>
NSX-edge-4-0>
NSX-edge-4-0>
NSX-edge-4-0>
NSX-edge-4-0>
NSX-edge-4-0>
NSX-edge-4-0>
NSX-edge-4-0>
NSX-edge-4-0>
NSX-edge-4-0>
NSX-edge-4-0>
NSX-edge-4-0> show ip route ospf

Codes: O - OSPF derived, i - IS-IS derived, B - BGP derived,
C - connected, S - static, L1 - IS-IS level-1, L2 - IS-IS level-2,
IA - OSPF inter area, E1 - OSPF external type 1, E2 - OSPF external type 2,
N1 - OSPF NSSA external type 1, N2 - OSPF NSSA external type 2

O E2 172.16.0.0/16 [110/0] via 192.168.100.6
O E2 192.168.5.0/24 [110/0] via 192.168.100.6
O E2 192.168.6.4/30 [110/0] via 192.168.100.6
NSX-edge-4-0>
```





