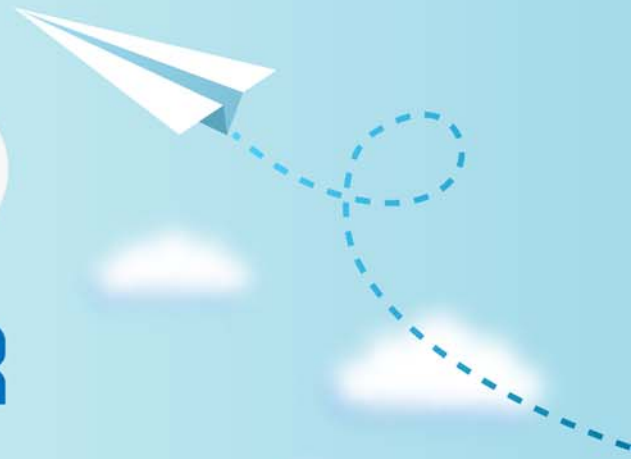


CERTPARK



QUESTION & ANSWER



CERTPARK.COM

Accurate Study Guides,
High Passing Rate!
provides update
free of charge
in one year!



Exam : **4A0-104**

Title : Alcatel-Lucent Services
Architecture

Version : Demo

1.VPWS allows carriers to offer services such as point-to-point frame-relay, ATM, and Ethernet on a single platform without the need for multiple overlay networks.

- A. TRUE
- B. FALSE

Answer: A

2.Which of the following best describes a VPLS?

- A. Layer 3direct Internet access service
- B. Layer 2 point-to-point service
- C. Layer 2 multipoint-to-multipoint service
- D. Layer 3 IP multipoint-to-multipoint VPN service

Answer: C

3.Which of the following is NOT a VPWS service supported on the Alcatel-Lucent 7750 SR?

- A. Epipe
- B. Fpipe
- C. Apipe
- D. Ipipe
- E. Cpipe
- F. Gpipe

Answer: F

4.A service can be either local or distributed.

- A. TRUE
- B. FALSE

Answer: A

5.When configuring distributed services across a network, it is considered best practice to configure which of the following parameters as globally significant? (Choose 2)

- A. SDP ID
- B. Service ID
- C. Customer ID
- D. SAP ID

Answer: B,C

6.When a physical port is configured for null encapsulation, many SAPs can be configured using that port.

- A. TRUE
- B. FALSE

Answer: B

7.Which of the following statements is FALSE regarding SAPs?

- A. VPWS: SAPs can be defined on Ethernet, POS, Sonet/SDH, or TDM channels.
- B. VPWS: Two SAPs are defined for a service that originates and terminates on the same Alcatel-Lucent 7750 SR

C. VPLS: More than two SAPs can be defined in a service.

D. VPWS: SAPs are associated with an IP interface.

Answer: D

8.SAPs in an Epipe service can only be configured on Ethernet ports

A. TRUE

B. FALSE

Answer: B

9.Which of the following commands is used to configure the encapsulation type of an Ethernet port?

A. configure ethernetencap-typedot1q|null|qinq port port-id

B. configure service port port-id ethemetencap-typedot1q|null|qinq create

C. configure port port-idEthernetencap-type dot1q|null|qmq

D. configure service service-idEthernetencap-type dot1q|null|qinq create

Answer: C

10.Which of the following best describes a distributed Epipe Service?

A. An Epipe that has 2 or more SDPs configured.

B. An Epipe that has 3 or more SAPs configured.

C. An Epipe that has 2 SAPs on the same node but no SDPs configured

D. An Epipe that is configured between two nodes, each having 1 SAP and 1 SDP configured.

Answer: D

11.Which of the following options are used to configure an MPLS signaling type to be used on an SDP?
(Choose 2)

A. configure service sdp sdp-id gre create

B. configure service sdp sdp-id create

C. ldp

D. lsp lsp-name

Answer: C,D

12.Which of the following encapsulation types on an Ethernet port support the provisioning of multiple SAPs? (Choose 2)

A. Dot1Q

B. Q-in-Q

C. ATM

D. NULL

E. Nil

Answer: A,B

13.Which tree in the CLI would you need to be in to add a QoS policy to a SAP?

A. config>router#

B. config>qos#

C. config>port#

D. config>service#

Answer: D

14. Which of the following commands is used to disable an Epipe service?

- A. config>service# epipe service-id shutdown
- B. config>service# vpws service-id shutdown
- C. config>service# service-id shutdown
- D. config>port# port-id shutdown.
- E. config>service# epipe service-id disable

Answer: A

15. Which of the following commands is required to configure an Ethernet port to be used as a SAP in a service?

- A. Configure service sap sap-id access
- B. Configure port port-idEthernetmode access
- C. Configure port port-idEthernetmode network
- D. Configure port port-id mode access
- E. Configure port port-id mode network

Answer: B

16. Which of the following tasks must be carried out before deleting an Epipe service? (Choose 4)

- A. Shut down all SAPs associated with the service.
- B. Shut down all SDPs associated with the service.
- C. Delete all SAPs and SDPs associated with the service.
- D. Shut down all physical ports that are bound to a SAP.
- E. Delete the Customer ID.
- F. Shut down the service.

Answer: A,B,C,F

17. Which of the following SAPs will forward all tagged and untagged frames on the port? (Choose 2)

- A. sap 1/1/1
- B. sap 1/1/1:*
- C. sap 1/1/1:*.0
- D. sap 1/1/1:0*
- E. sap 1/1/1:0

Answer: A,B

18. A customer requests that their Layer 2 Ethernet service be configured to forward frames up to 9000 bytes. The service provider is using MPLS encapsulation.

What is the minimum MTU setting for the network ports?

- A. 9000
- B. 9004
- C. 9008
- D. 9022

E. 9036

Answer: D

19.FRF.5 is a standard that describes which of the following requirements?

- A. ATM to Frame Relay translation.
- B. Frame Relay to Ethernet translation.
- C. ATM tunneling over a Frame Relay core network.
- D. Frame Relay tunneling over an ATM core network.
- E. Frame Relay tunneling over an MPLS/IP core network

Answer: D

20.Which of the following statements are TRUE regarding a fully meshed VPLS service with a default setting? (Choose 3)

- A. The vc-id on the mesh-sdp must be explicitly configured.
- B. The vc-id on the mesh-sdp is automatically assigned by a PE using the service id.
- C. The VPLS service id, on all PE routers, does not have to match.
- D. The VPLS service id, on all PE routers, must match.
- E. If dynamic signaling is required, the signaling on all PE routers must be set to TLDP in the configuration of the SDPs.
- F. The signaling on all PE routers will default to TLDP in the configuration of the SDPs; therefore, no configuration change is required for dynamic signaling.

Answer: A,D,F