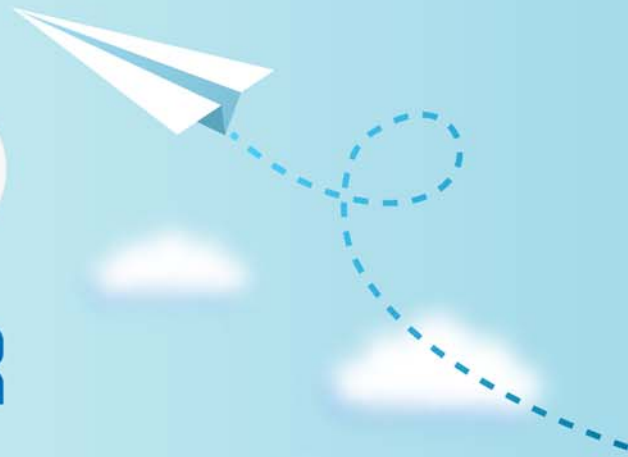


CERTPARK



QUESTION & ANSWER



CERTPARK.COM

Accurate Study Guides,
High Passing Rate!
provides update
free of charge
in one year!



<https://www.certpark.com>

Exam : **500-230**

Title : Cisco Service Provider
Routing Field Engineer

Version : DEMO

1.What is the default MP-BGP address-family on IOS-XR?

- A. IPv6 unicast
- B. There is no default address-family
- C. IPv4 unicast
- D. VPNv4

Answer: B

2.Which command removes a user from configuration mode but keeps the user connected to the router?

- A. clear line
- B. clear session
- C. clear commit
- D. clear config session

Answer: D

3.Which command is used to configure an interface that does not currently exist in the system?

- A. interface preconfigure
- B. preconfigure interface
- C. interface vrf preconfig
- D. controller preconfigure

Answer: A

4.What is the TRACE command?

- A. A packet tracer showing the path of a packet from ingress to egress in the router.
- B. The replacement for TraceRoute in IOS-XR.
- C. A form of always-on debugging available for a subset of commands.
- D. Exactly the same as the debug command, must be explicitly turned on.

Answer: A

5.One of your peers show <NO NEG> in the SHOW BGP VPNV4 UNICAST SUMMARY output.
What is the cause of this?

- A. The label value ranges are mismatched.
- B. The peer has no prefixes with a Route-Target that the local router is importing.
- C. The BGP prefixes between the routers have not fully converged and will correct itself in time.
- D. The peer router is not configured to use the VPNv4 address-family for this connection.

Answer: D