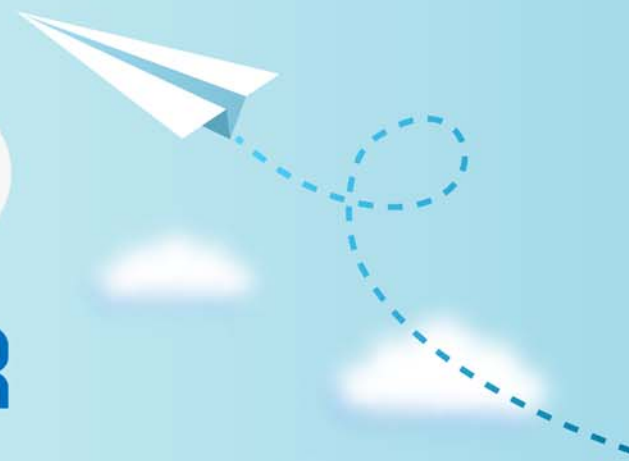


# CERTPARK

## QUESTION & ANSWER



CERTPARK.COM

Accurate Study Guides,  
High Passing Rate!  
provides update  
free of charge  
in one year!



<https://www.certpark.com>

**Exam** : **500-601**

**Title** : Application Centric  
Infrastructure Support  
Representative

**Version** : DEMO

1.If a Cisco ARC cluster is fully operational, how many replica copies does each shard have in addition to the leader replica?

- A. 4
- B. 3
- C. 1
- D. 2

**Answer: B**

2.Which two statements about Cisco ACI interaction with STP in legacy networks are true? (Choose two)

- A. External switches ignore flooded BPDU frames received from the Cisco ACIfabric.
- B. BPDU guard is enabled on FEX ports by default.
- C. BPDU guard cannot be configured on leaf edge ports.
- D. STP is enabled by default within the Cisco ACIfabric.
- E. BPDU frame is flooded within EPG No configuration is required.

**Answer: A,D**

3.Which MO name represents a physical domain?

- A. RtDomP
- B. PhysDomP
- C. physDomP
- D. InfraRtDomP

**Answer: C**

4.Which command allows you to log in to a line card on a leaf switch?

- A. Leaf# vsh\_lc
- B. Leaf#vsh
- C. Leaf\*vsh-lc
- D. Leaf# vshell -lc
- E. Leafs vsh-hw

**Answer: E**

5.Refer to the exhibit

```
# vlan.CktEp
encap          : vlan-2230
adminSt       : active
childAction    :
createTs      : 2015-06-10T15:12:53.000+01:00
ctrl          : policy-enforced
dn            : topology/pod-1/node-101/sys/ctx-[vxlan-2818051]/bd-[vxlan-
16514959]/vlan-[vlan-2230]
enfPref       : hw
epgDn         : uni/tn-Prod/ap-App1/epg-web-server
fabEncap      : vxlan-9101
hwId          : 49
id            : 45
lcOwn         : local
modTs        : 2015-06-10T15:12:12.544+01:00
mode          : CE
monPolDn      : uni/tn-Prod/monepg-Prod-Mon
name          : Prod:App1:web-server
operSt        : up
operStQual    : unspecified
operState     : disabled
pctag         : 49158
qosPrio       : unspecified
qosmCfgFailedBmp :
qosmCfgFailedTs : 00:00:00:00.000
qosmCfgState  : 0
rn            : vlan-[vlan-2230]
status        :
type          : ckt-vlan
vlanmgrCfgFailedBmp :
vlanmgrCfgFailedTs : 00:00:00:00.000
```

Which two statements about this managed object are true? (Choose two)

- A. This object is part of the concrete model.
- B. There are endpoints with encapsulation vlan-2230 in the EPG name "web-server" on node 101.
- C. This object is part of the resolved model.
- D. This object is part of the logical model
- E. This object represents an FPG named "web server" in tenant Prod.

**Answer:** B,C