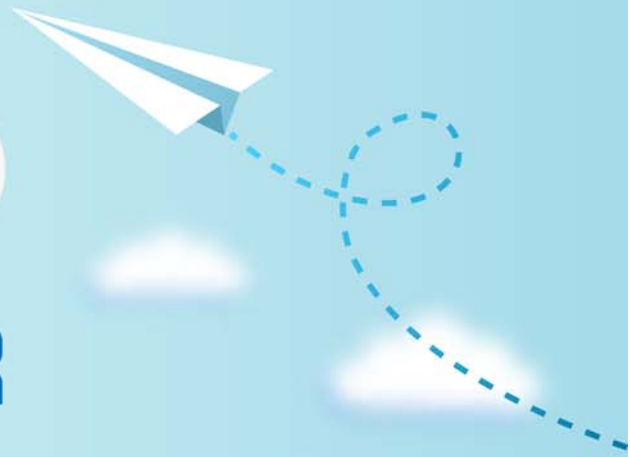


# CERTPARK



## QUESTION & ANSWER



CERTPARK.COM

Accurate Study Guides,  
High Passing Rate!  
provides update  
free of charge  
in one year!



**Exam** : **500-710**

**Title** : Video Infrastructure  
Implementation (VII)

**Version** : DEMO

1.Which two administrative functions can a Cisco Spark Partner reseller perform from the Cisco Spark Management portal? (Choose two.)

- A. Quickly start customer trials.
- B. Determine Single Sign-On customer usage reports.
- C. Enable Single Sign-On and Directory sync through corporate LDAP services on-premises.
- D. Determine role-based access and view usage reports.
- E. Help to manage the customer accounts.

**Answer: AE**

2.Which two ports are used for SIP communications between an endpoint and the SIP server? (Choose two.)

- A. 1719 (TCP) B. 5061 (TLS)
- C. 1721 (TLS)
- D. 5060 (TCP)
- E. 1720 (TCP)

**Answer: BD**

3.Which statement about Microsoft Skype for Business interoperability with Cisco Meeting Server is true?

- A. Calls cannot be place between S4B and Cisco Meeting App users
- B. Local directories can always be used between S4B users and CMA
- C. Chat can be used between S4B and Cisco Meeting App users
- D. Chat can be used between S4B and Cisco Meeting Server Spaces

**Answer: B**

4.An engineer wants to only allow the registration of endpoints with aliases containing [cisco.com](http://cisco.com) as the domain.

Which option accomplishes this task?

- A. Set the restriction policy to "Deny" and include the expression.\*@\*in the deny list.
- B. Set the restriction policy to "Allow" and include the expression\\|@ [cisco.com](http://cisco.com) in the allow list.
- C. Set the restriction policy to "Allow" and include the expression. \*@cisco. com in the allow list.
- D. Set the restriction policy to "None" and include the expression \\|@ [cisco.com](http://cisco.com) in the allow list.

**Answer: C**

5.Which statement about the deployment of Cisco Conductor with Cisco Telepresence Server for Rendezvous Conferences is true?

- A. Conductor must be added to the TMS database.
- B. A SIP trunk must be established between Conductor and the TelePresence Server.
- C. A neighbor zone and search rules must be built between the Expressway and the Conductor.
- D. A neighbor zone and search rules must be built between the Expressway and TelePresence Server.

**Answer: C**