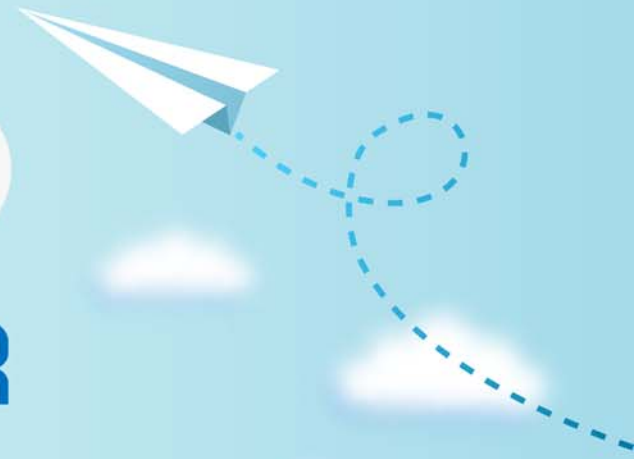


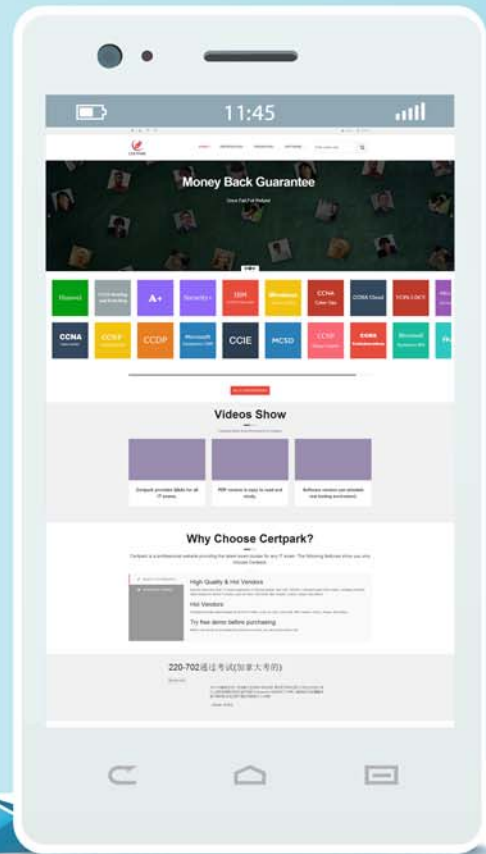
# CERTPARK

QUESTION & ANSWER



CERTPARK.COM

Accurate Study Guides,  
High Passing Rate!  
provides update  
free of charge  
in one year!



<https://www.certpark.com>

**Exam** : **5V0-11.21**

**Title** : VMware Cloud on AWS  
Master Specialist

**Version** : DEMO

1.The Tier-O (TO) router will send northbound packets through which device?

- A. The AWS Elastic Network Adapter (ENA) of the VMware ESXi host that the active TO Edge virtual machine is currently running on.
- B. The AWS Elastic Network Adapter (ENA) of the VMware ESXi host where the packet is originating from.
- C. The AWS Elastic Network Adapter (ENA) of the VMware ESXi host that the passive TO Edge virtual machine is currently running on.
- D. The AWS Elastic Network Adapter (ENA) of the VMware ESXi host that is currently the least utilized.

**Answer: C**

2.An administrator deploys a virtual machine to its software-defined data center (SDDC) and configures it to perform backups of the other virtual machines in the SDDC. The administrator also creates an AWS Simple Storage Service (S3) bucket in the linked Amazon Virtual Private Cloud (VPC) and is attempting to use the S3 bucket as a repository for their backups. The administrator confirms that the backup software is capable of using AWS S3 storage as a backup repository, and that the AWS S3 bucket is configured to use an endpoint in the linked VPC.

What else should the administrator do to ensure connectivity between SDDC virtual machines and the AWS S3 repository in the linked VPC through the Elastic Network Interface?

- A. Configure Direct Connect to a Private Virtual Interface for access to AWS services.
- B. Configure a route-based VPN for the SDDC to the VPC.
- C. Configure Direct Connect to a Public Virtual Interface for access to AWS services.
- D. Ensure Service Access for S3 is enabled in Networking and Security for the SDDC.

**Answer: A**

**Explanation:**

Reference:

<https://aws.amazon.com/blogs/storage/storage-options-and-designs-for-vmware-cloud-on-aws/>

3.A customer is running a software-defined data center (SDDC) in the US-West-1 region and wants to connect the workload network segment to their on-premises data center and their company Amazon Virtual Private Cloud (VPC) running in US-West-1.

Which two supported connectivity options can they use to accomplish this? (Choose two.)

- A. One virtual private network (VPN) and one VPC Peering
- B. VMware SD-WAN by VeloCloud
- C. VMware Managed Transit Gateway (VTGVV)
- D. Two virtual private networks (VPNs)
- E. VMware HCX

**Answer: B,D**

4.Which statement is true regarding how vSphere High Availability (HA) provides rapid recovery from outages in VMware Cloud on AWS?

- A. Sphere HA restarts virtual machines if their host becomes isolated on the VMware vSAN network.
- B. vSphere HA restarts impacted virtual machines on another host when an application fails.
- C. vSphere HA is enabled by default in VMware Cloud on AWS but can be disabled or modified.
- D. vSphere HA restarts impacted virtual machines (VMs) on another host when a VM stops sending heartbeats or the VM process fails (vmx).

**Answer: B**

**Explanation:**

Hosts in the cluster are monitored and in the event of a failure, the virtual machines on a failed host are restarted on alternate hosts.

Reference:

<https://docs.vmware.com/en/VMware-vSphere/7.0/com.vmware.vsphere.avail.doc/GUID-33A65FF7-DA22-4DC5-8B18-5A7F97CCA536.html>

5. A virtual machine in VMware Cloud on AWS sends a packet to an Amazon Elastic Compute Cloud (EC2) Linux instance in the associated AWS account.

Which device is the next hop for the packet?

- A. Edge Virtual Machine
- B. AWS Elastic Network Adapter (ENA) on the VMware ESXI host
- C. Tier-0 (T0) Router
- D. Tier-1 (T1) Router

**Answer: B**