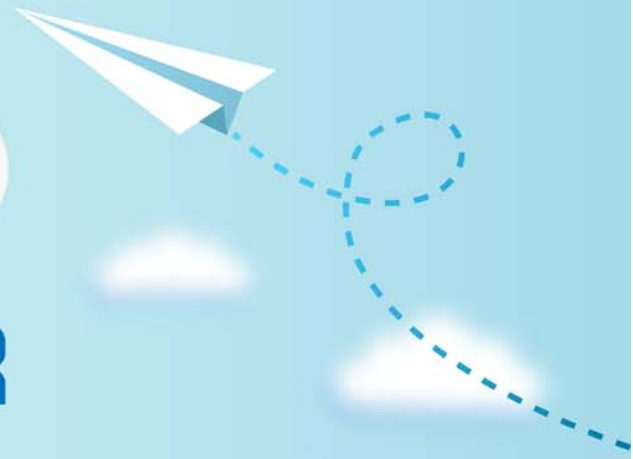


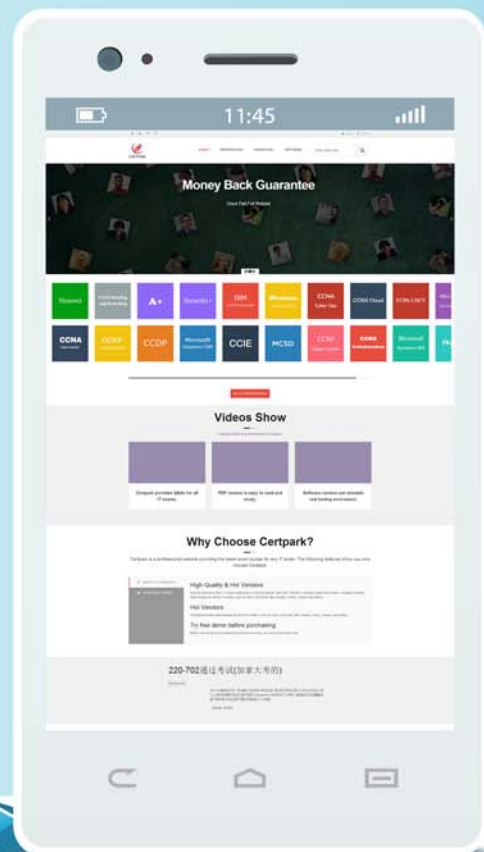
# CERTPARK

## QUESTION & ANSWER



CERTPARK.COM

Accurate Study Guides,  
High Passing Rate!  
provides update  
free of charge  
in one year!



<https://www.certpark.com>

**Exam : 640-916**

**Title : Introducing Cisco Data  
Center Technologies**

**Version : DEMO**

1.A network architecture team is looking for a technology on Cisco Nexus switches that significantly simplifies extending Layer 2 applications across distributed data centers. The team wants the Cisco Data Center Interconnect between sites and without changing or reconfiguring the existing network design. Which technology should be used?

- A. Multiprotocol Label Switching
- B. Cisco FabricPath
- C. virtual switching system
- D. virtual port channel
- E. Overlay Transport Virtualization

**Answer:** E

2.Which three devices support FCoE? (Choose three.)

- A. Cisco Nexus 5500
- B. Cisco Nexus 7000
- C. Cisco Nexus 3000
- D. Cisco Nexus 1000V
- E. Cisco UCS Fabric Interconnect

**Answer:** A,B,E

3.Which is the maximum number of active zone sets on Cisco MDS 9500 Series Fibre Channel Switches?

- A. 1 with all licenses
- B. 2 with Standard Zoning license
- C. 3 with Enhanced Zoning license
- D. 4 with Enterprise Zoning license

**Answer:** A

4.In a large enterprise, which two SAN switches are ideal core switches for providing high availability? (Choose two.)

- A. Cisco Nexus 5548
- B. Cisco MDS 9710
- C. Cisco MDS 9509
- D. Cisco Nexus 7028
- E. Cisco MDS 9222i

**Answer:** B,C

5.A network engineer wants to enable a FCoE feature on a Cisco Nexus 5500 Series Switch. When does that occur?

- A. after the configuration is saved and rebooted
- B. after the configuration is saved
- C. after at least one port is configured to operate in FCoE mode
- D. after the license is applied

**Answer:** A