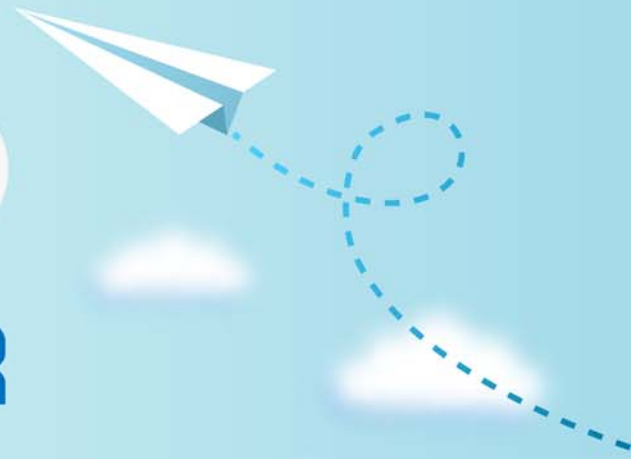


# CERTPARK

## QUESTION & ANSWER



CERTPARK.COM

Accurate Study Guides,  
High Passing Rate!  
provides update  
free of charge  
in one year!



<https://www.certpark.com>

**Exam : 642-999**

**Title : Implementing Cisco Data  
Center Unified Computing**

**Version : DEMO**

1.What is a true statement concerning automatic Fibre Channel pinning on a Cisco Unified Computing System 62XX Fabric Interconnect?

- A. By default, uplink Fibre Channel interfaces are configured for VSAN trunking.
- B. Using NPV, each downstream server will be pinned to an uplink port that is based on a PIN group.
- C. The Fibre Channel pinning process is implemented differently than end-host MAC address pinning.
- D. With VSAN trunking, the automatic pinning of server traffic to Fibre Channel uplink ports will be based on the server WWN.

**Answer: D**

2.Which two VMware features must be turned off in the data center cluster for Cisco VM-FEX universal passthrough to operate? (Choose two.)

- A. VMCI
- B. DRS
- C. FT
- D. HA
- E. vMotion

**Answer: A,C**

3.Refer to the exhibit.

```
FI-A# scope org
FI-A /org# scope boot-policy Testing
FI-A /org/boot-policy # create san
FI-A /org/boot-policy/san* # set order 1
FI-A /org/boot-policy/san* # create san-image primary
FI-A /org/boot-policy/san/san-image* # set vhma vHBA3
FI-A /org/boot-policy/san/san-image* # create path primary
FI-A /org/boot-policy/san/san-image/path* # set lun 0
FI-A /org/boot-policy/san/san-image/path* # commit-buffer
FI-A /org/boot-policy/san/san-image/path #
```

You are configuring a Cisco UCS Fabric Interconnect. You associate a blade server to a service profile that has the Testing boot policy. Which statement describes the result of the configuration?

- A. The iSCSI boot was created for the LAN boot policy.
- B. The blade server fails to boot due to a missing configuration line of set order 0.
- C. The blade server first tries to boot by using vHBA3 across the SAN network.
- D. The blade server first tries to boot from the local storage, and if this fails, it boots from vHBA3.

**Answer: C**

Explanation:[http://www.cisco.com/c/en/us/td/docs/unified\\_computing/ucs/sw/cli/config/guide/ 2 2/b\\_UCSM\\_CLI\\_Configuration\\_Guide\\_2\\_2/configuring\\_server\\_boot.pdf](http://www.cisco.com/c/en/us/td/docs/unified_computing/ucs/sw/cli/config/guide/2_2/b_UCSM_CLI_Configuration_Guide_2_2/configuring_server_boot.pdf)

4.Refer to the exhibit.

```
FI-B(nxos)# show platform software enm internal info vlandb id 311
```

```
vlan_id 311
```

```
-----
```

```
Designated receiver: Po21
```

```
Membership:
```

```
Po22 Eth1/32 Eth1/20 Po1 Po21 Po30
```

Which two statements about the fabric interconnect are true? (Choose two.)

- A. The fabric interconnect forwards all broadcast packets on VLAN 311 out of each interface listed in the Membership.
- B. The fabric interconnect forwards broadcasts on VLAN 311 only when they are received on Po21.
- C. Without any changes to the switch, eth 1/32 could become the designated receiver for VLAN 311.
- D. All multicast traffic from a blade on VLAN 311 goes out of Po21.
- E. IGMP join packets from blades on VLAN 311 goes out Po21.

**Answer:** B,E

5.You must upgrade a Cisco UCS -Series Server. Where must the Cisco UCS bundle image be located before you can begin the upgrade?

- A. the Cisco Integrated Management Controller memory of the server
- B. a USB drive connected to a Cisco UCS Fabric Interconnect
- C. a TFTP server accessible to the Cisco UCS Fabric Interconnect
- D. the flash file system of the fabric interconnect

**Answer:** C

Explanation:

[http://www.cisco.com/c/en/us/td/docs/unified\\_computing/ucs/sw/firmwaremgmt/gui/21/b\\_GUI\\_Firmware\\_Management\\_21/downloading\\_and\\_managing\\_firmware\\_in\\_cisco\\_ucs\\_manager.html#concept\\_1923688E7A2E46239DCAE363E4A3DE81](http://www.cisco.com/c/en/us/td/docs/unified_computing/ucs/sw/firmwaremgmt/gui/21/b_GUI_Firmware_Management_21/downloading_and_managing_firmware_in_cisco_ucs_manager.html#concept_1923688E7A2E46239DCAE363E4A3DE81)