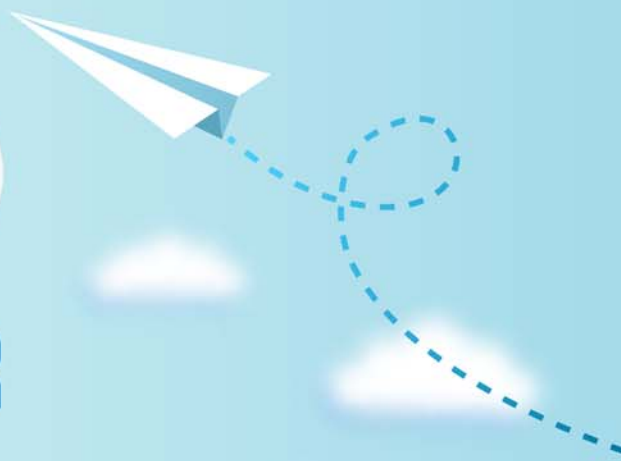


CERTPARK

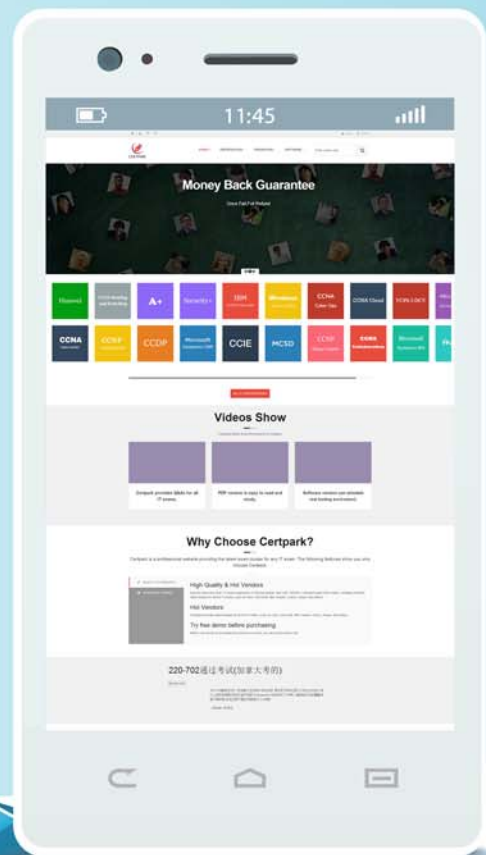


QUESTION & ANSWER



CERTPARK.COM

Accurate Study Guides,
High Passing Rate!
provides update
free of charge
in one year!



Exam : **70-398**

Title : Planning for and Managing
Devices in the Enterprise

Version : DEMO

1.Topic 1, Mix Questions set1 DRAG DROP

A company plans to upgrade all devices from Windows 7 to Windows 10. All Windows 10 devices belong to an organizational unit (OU) named Desktops. All devices for users in the sales department are enrolled in Azure Active Directory (AD). All users belong to an OU named Employees.

Users in the finance department must not be able to modify the power policy settings.

You need to apply the power policy.

What should you do? To answer, drag the appropriate option to the correct item. Each option may be used once, more than once, or not at all. You may need to drag the split bar between panes or scroll to view content.

Options	Answer Area
Active Directory	Item
Azure AD	Policy type
Computer-based group policy	Directory
Desktops OU	Target OU
Employees OU	
User-based group policy	

A

Answer:

Options	Answer Area
Active Directory	Item
Azure AD	Policy type
Computer-based group policy	Directory
Desktops OU	Target OU
Employees OU	
User-based group policy	

Option
Computer-based group policy
Active Directory
Desktops OU

2.DRAG DROP





You manage 500 laptop devices and 250 desktop devices that run Windows 10. All devices are joined to an Active Directory Domain Services (AD DS) domain. You also manage a Windows Server 2012 R2 file server named FILE01.

All user document folders must be located on FILE01.

You need to ensure that the mobile users can access documents offline.

Which four actions should you perform in sequence? To answer, move the appropriate actions from the list of actions to the answer area and arrange them in the correct order.

Actions	Sequence	Answer Area
At a command prompt, run the following command: gpupdate/target: FILE01		
Configure Group Policy folder redirection settings for offline files.		
Create a file share on FILE01 for redirected folders.		
Create a Group Policy Object for folder redirection.		
Link the Group Policy Object to appropriate AD DS organizational unit.		

 	 
--	--

Answer:

Actions	Sequence Answer Area
At a command prompt, run the following command: gpupdate/target: FILE01	Create a file share on FILE01 for redirected folders.
Configure Group Policy folder redirection settings for offline files.	Create a Group Policy Object for folder redirection.
Create a file share on FILE01 for redirected folders.	Configure Group Policy folder redirection settings for offline files.
Create a Group Policy Object for folder redirection.	Link the Group Policy Object to appropriate AD DS organizational unit.
Link the Group Policy Object to appropriate AD DS organizational unit.	

3.HOTSPOT

You upgrade 15 client devices to Windows 10 Enterprise.

You need to configure the devices.

Which Control Panel applets should you use? To answer, select the appropriate applet from each list in the answer area. Each correct answer is worth one point.

Answer Area

Which applet should you use to manage offline files?

Sync Center
Work Folders
Storage Spaces
File Explorer Options

Which applet should you use to require a password when the device wakes up?

System
Power Options
Administrative Tools
Bitlocker Drive Encryption

Which applet should you use to encrypt offline files?

Recovery
File History
File Explorer Options
Windows Mobility Center

Answer:

Answer Area

Which applet should you use to manage offline files?

▼

- Sync Center**
- Work Folders
- Storage Spaces
- File Explorer Options

Which applet should you use to require a password when the device wakes up?

▼

- System
- Power Options**
- Administrative Tools
- Bitlocker Drive Encryption

Which applet should you use to encrypt offline files?

▼

- Recovery
- File History
- File Explorer Options**
- Windows Mobility Center

4.A company implements offline files for all Windows 10 devices.

A user reports that they are running low on free disk space.

You need to determine the amount of disk space being used by offline files on the user's device.

What should you do?

- A. On the device, run the following Windows PowerShell command:`Get-Disk | Where-Object IsOffline- Eq $True | Set-Disk-IsOffline $False`
- B. Instruct the user to launch Resource Manager.
- C. On the device, run the following Windows PowerShell command:`Get-Disk | Where-Object IsOffline- Eq $False | Set-Disk-IsOffline $True`
- D. Instruct the user to launch Sync Center.

Answer: D

5.A company has tablet devices that run Windows 10. You configure auditing for devices.

You need to determine which audit policies are configured on the devices.

What should you do?

- A. At a command prompt, run the following command:`auditpol`
- B. Run the following Windows PowerShell cmdlet:`Get-AdminAuditLogConfig`
- C. At a command prompt, run the following command:`Dsget`
- D. At a command prompt, run the following command:`Winrm`
- E. Run the following Windows PowerShell cmdlet:`Get-AuditLogSearch`

Answer: A