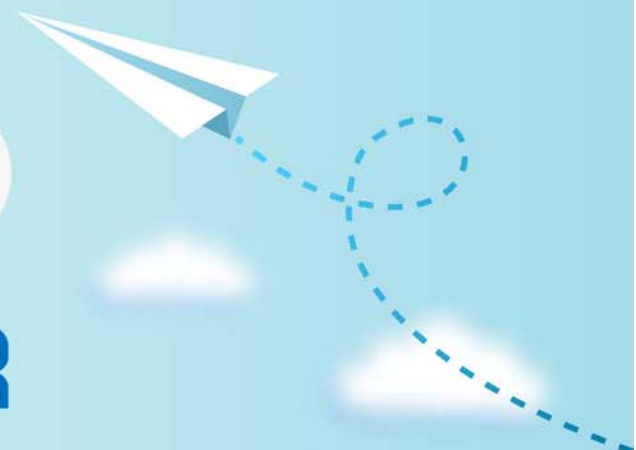


# CERTPARK

QUESTION & ANSWER



CERTPARK.COM

Accurate Study Guides,  
High Passing Rate!  
provides update  
free of charge  
in one year!



**Exam** : **70-764**

**Title** : Administering a SQL  
Database Infrastructure

**Version** : DEMO

## 1. Topic 1, Exam Pool A

Note: This question is part of a series of question that present the same scenario. Each question in the series contains I unique solution that might meet the stated goals Some question sets might have more than one correct solution, while others might not have a correct solution.

After you answer a question in this section, you will NOT be able to return to it As a result, these questions will not appear in the review screAen. Your company has several Microsoft SQL Saver instance. Each instance hosts many database. You observe I/O corruption on some of the instance.

You need to perform the following actions:

- identify databases where the PAGE verity option is not set.
- Configure full page protection for the identified databases.

Solution: You run the following Transact-SQL statement:

```
SELECT NAME, page_verify_option_desc
FROM master.sys.databases
WHERE page_verify_option_desc != 'CHECKSUM'
GO
```

For each database that you identify, you run the following Transact-SQL statement:

```
ALTER DATABASE <database_name>
SET PAGE_VERIFY CHECKSUM
```

Does the solution meet the goal?

- A. Yes
- B. No

**Answer:** A

2.Note: This question is part of a series of questions that present the same scenario. Each question in the series contains a unique solution that might meet the stated goals. Some question sets might have more than one correct solution, while others might not have a correct solution.

After you answer a question in this section, you will NOT be able to return to it. As a result, these questions will not appear in the review screen. Your company has several Microsoft SOI Server instances. Each instance hosts many databases. You observe I/O corruption on some of the instances.

You need to perform the following actions:

- Identify databases where the PAGE VERIFY option is not set.
- Configure full page protection for the identified databases.

Solution: You run the following Transact-SQL statement:

```
SELECT NAME, page_verify_option_desc
FROM master.sys.databases
WHERE page_verify_option_desc != 'TORN_PAGE_DETECTION'
GO
```

For each database that you identify, you run the following Transact-SQL statement:

```
ALTER DATABASE <database_name>  
SET PAGE_VERIFY TORN_PAGE_DETECTION
```

Does the solution meet the goal?

- A. Yes
- B. NO

**Answer:** B

**Explanation:**

We should check for CHECKSUM not TORN\_PAGE\_DETECTION References:

<https://docs.microsoft.com/en-us/sql/relational-databases/policy-based-management/set-the-page-verify-database-option-to-checksum?view=sql-server-2017>

3.Note: This question is part of a series of questions that present the same scenario. Each question in the series contains a unique solution that might meet goals. Some question sets might have more than one correct solution, while others might not have a correct solution.

After you answer a question in this section, you will NOT be able to return to it As a result these questions will not appear in the review screen. Your company has several Microsoft SQL Server instances, Each instance hosts many databases. You observe I/O corruption on some of the instances

You need to perform the following actions:

- Identify databases where the PAGE\_VERIFY option is not set
- Configure full page protection for the identified databases.

Solution: You run the following Transact-SQL statement:

```
SELECT NAME, page_verify_option_desc  
FROM master.sys.databases  
WHERE page_verify_option_desc = 'NONE'  
GO
```

For each database that you identify, you run the following Transact-SQL statement:

```
ALTER DATABASE <database_name>  
SET PAGE_VERIFY TORN_PAGE_DETECTION
```

Does the solution meet the goal?

- A. Yes
- B. No

**Answer:** B

**Explanation:**

We should check for CHECKSUM not NONE or TORN\_PAGE\_DETECTION

References:

<https://docs.microsoft.com/en-us/sql/relational-databases/policy-based-management/set-the-page-verify-database-option-to-checksum?view=sql-server-2017>

4.Note: This question is part of a series of questions that present the same scenario. Each question in the series contains a unique solution that might meet goals. Some question sets might have more than one

correct solution, while others might not have a correct solution.

After you answer a question in this section, you will NOT be able to return to it As a result these questions will not appear in the review screen.

You have a database named DB1 that is 640 GB and is updated frequently. You enabled log shipping for DB1 and configure backup and restore to occur every 30 minutes. You discover that the disks on the data server are almost full. You need to reduce the amount of disk space used by the log shipping process.

Solution: You configure log shipping to backup and restore by using shared folder.

Does this meet the goal?

A. Yes

B. No

**Answer: B**

5.Note: This question is part of a series of questions that present the same scenario. Each question in the series contains a unique solution that might meet goals. Some question sets might have more than one correct solution, while others might not have a correct solution.

After you answer a question in this section, you will NOT be able to return to it As a result these questions will not appear in the review screen.

You have a database named DB1 that is 640 GB and is updated frequently. You enabled log shipping for DB1 and configure backup and restore to occur every 30 minutes. You discover that the disks on the data server are almost full. You need to reduce the amount of disk space used by the log shipping process.

Solution: You enable compression for the transaction log backups:

Does this meet the goal?

A. Yes

B. No

**Answer: A**

**Explanation:**

SQL Server 2017 supports backup compression. When creating a log shipping configuration, you can control the backup compression behavior of log backups by choosing one of the following options: Use the default server setting, Compress backup, or Do not compress backup

Note: SQL Server 2008 Enterprise and later versions support backup compression.

References: <https://docs.microsoft.com/en-us/sql/database-engine/log-shipping/configure-log-shipping-sql-server?view=sql-server-2017>