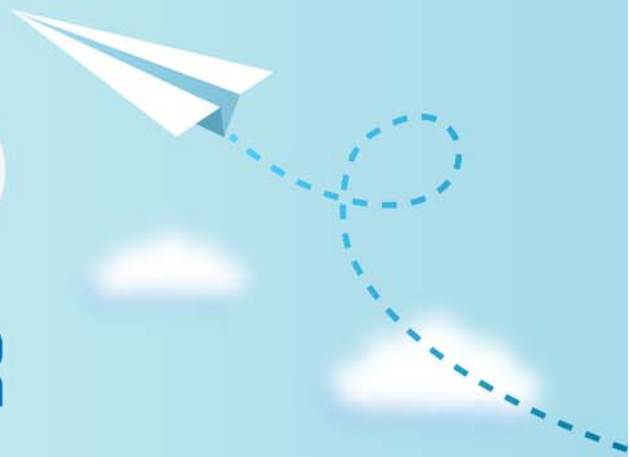


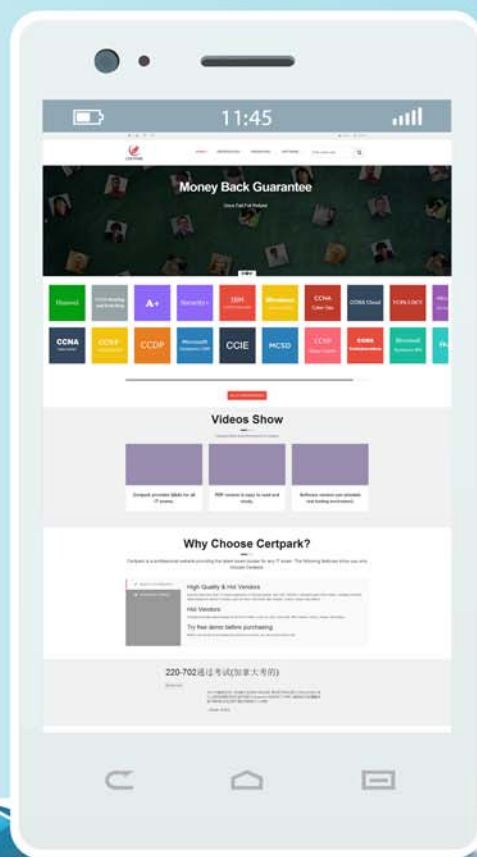
CERTPARK

QUESTION & ANSWER



CERTPARK.COM

Accurate Study Guides,
High Passing Rate!
provides update
free of charge
in one year!



<https://www.certpark.com>

Exam : **70-773**

Title : Analyzing Big Data with
Microsoft R

Version : DEMO

1.Note: This question is part of a series of Questions that present the same scenario. Each question in the series contains a unique solution that might meet the stated goals. Some question sets might have more than one correct solution, while others might not have a correct solution-After you answer a question in this section, you will NOT be able to return to it- As a result, these questions will not appear in the review screen.

You use `dplyrXdf` and you discover that after you exit the session, the output files that were created were deleted. You need to prevent the files from being deleted.

Solution: You use `rxSetComputeContext` with the `local` parameter before performing operations that save results.

Does this meet the goal?

A. Yes

B. No

Answer: B

2.Note: This question is part of a series of Questions that present the same scenario. Each question in the series contains a unique solution that might meet the stated goals. Some question sets might have more than one correct solution, while others might not have a correct solution-After you answer a question in this section, you will NOT be able to return to it- As a result, these questions will not appear in the review screen.

You use `dplyrXdf` and you discover that after you exit the session, the output files that were created were deleted. You need to prevent the files from being deleted.

Solution: You use `dplyrXdf` with the `outFile` parameter and specify a path other than the working directory for `dplyrXdf`.

Does this meet the goal?

A. Yes

B. No

Answer: A

3.Note: This question is part of a series of Questions that present the same scenario. Each question in the series contains a unique solution that might meet the stated goals. Some question sets might have more than one correct solution, while others might not have a correct solution-After you answer a question in this section, you will NOT be able to return to it- As a result, these questions will not appear in the review screen.

You use `dplyrXdf` and you discover that after you exit the session, the output files that were created were deleted. You need to prevent the files from being deleted.

Solution: You remove all instances of the `file.remove` method.

Does this meet the goal?

A. Yes

B. No

Answer: B

4.Note: This question is part of a series of Questions that present the same scenario. Each question in the series contains a unique solution that might meet the stated goals. Some question sets might have more than one correct solution, while others might not have a correct solution-After you answer a question in

this section, you will NOT be able to return to it- As a result, these questions will not appear in the review screen.

You use dplyrXdf and you discover that after you exit the session, the output files that were created were deleted. You need to prevent the files from being deleted.

Solution: You use dplyrXdf with the persist verb.

Does this meet the goal?

A. Yes

B. No

Answer: A

5.Note: This question is part of a series of Questions that present the same scenario. Each question in the series contains a unique solution that might meet the stated goals. Some question sets might have more than one correct solution, while others might not have a correct solution-After you answer a question in this section, you will NOT be able to return to it- As a result, these questions will not appear in the review screen.

You have a Microsoft SQL Server instance that has R Services (In-Database) installed. You need to monitor the R jobs that are sent to SQL Server.

Solution: You create an events trace configuration file and place the file in the same directory as the BXLServer process.

Does this meet the goal?

A. Yes

B. No

Answer: B