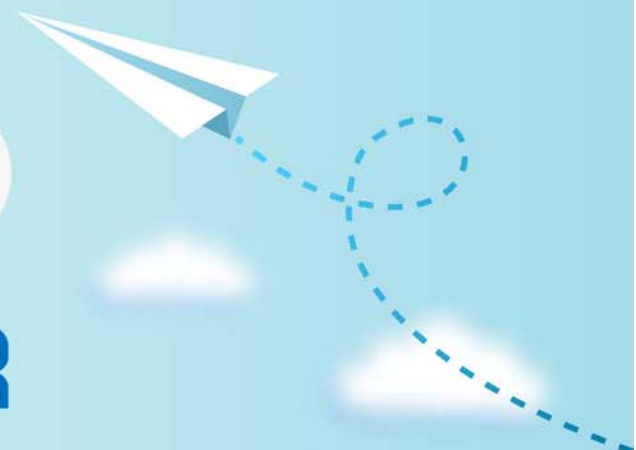


# CERTPARK

QUESTION & ANSWER



CERTPARK.COM

Accurate Study Guides,  
High Passing Rate!  
provides update  
free of charge  
in one year!



**Exam** : **700-651**

**Title** : Cisco Collaboration  
Architecture Sales  
Essentials (CASE)

**Version** : DEMO

1.How long do new workforce employees stay with a company on average?

- A. 5 to 10 years
- B. 9 to 15 years
- C. 3 years or less
- D. 3 to 5 years

**Answer: B**

2.Which feature of SWSS eliminates the need to repurchase software licenses?

- A. software updates
- B. expert support
- C. license portability
- D. license updates

**Answer: C**

Explanation:

When purchased with Cisco ONE™ Software, SWSS provides support for license portability. During a hardware refresh, this allows you to reassign license entitlements from one hardware platform to another and eliminates the need to purchase new software licenses.

[https://www.cisco.com/c/dam/en\\_us/services/portfolio/documents/support-service-qa.pdf](https://www.cisco.com/c/dam/en_us/services/portfolio/documents/support-service-qa.pdf)

3.How does Cisco Enterprise licensing provide a customer advantage?

- A. It requires individual licensing per device
- B. It simplifies collaboration solutions
- C. It simplifies bandwidth licensing
- D. It requires individual licensing per product

**Answer: B**

Explanation:

<https://www.cisco.com/c/dam/en/us/products/collateral/software/q-and-a-c67-738992.pdf>

4.Which options are the Cisco user-based license models?

- A. Cisco UWL and Cisco UCL
- B. Cisco WUL and Cisco CUL
- C. Cisco Flex Plans
- D. Cisco User Integration and Adoption Plans

**Answer: A**

5.Which Customer Lifecycle touch point demonstrates commitment to the business objectives of a customer by suggesting complimentary solutions?

- A. Maximize Customer Investment Value
- B. Evaluate Expansion Opportunities
- C. Identify Coverage Gaps
- D. Capitalize on Renewals

**Answer: B**

Explanation:

<https://impact.cisco.com/2016/02/5-key-touchpoints-in-the-customer-lifecycle-creating-customers-for-life/>

Demonstrate commitment to a customer's business objectives by suggesting complementary solutions designed to improve network performance. By tracking and managing the lifecycle of these products, your business stands to gain an ongoing annuity stream that adds up over time.