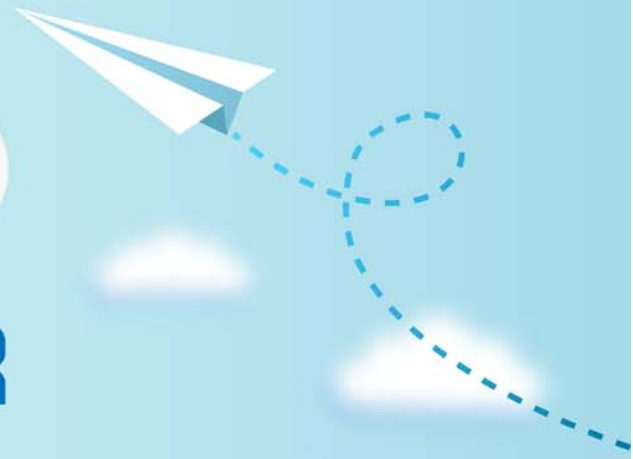


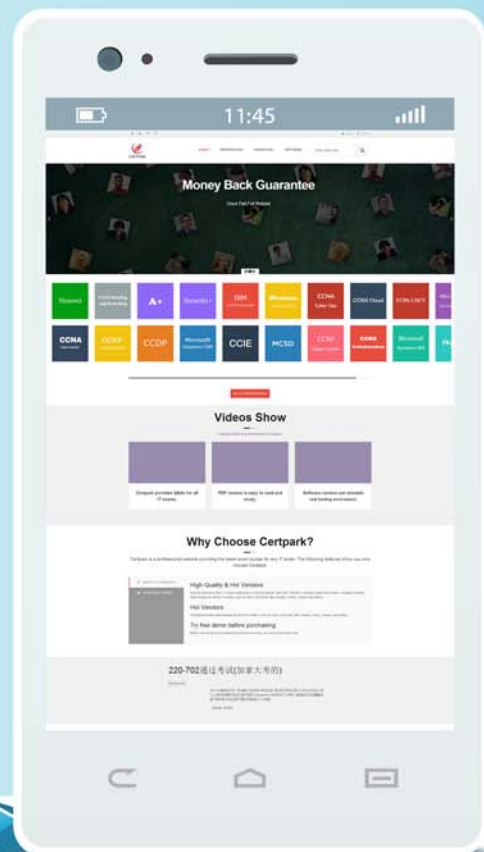
# CERTPARK

## QUESTION & ANSWER



CERTPARK.COM

Accurate Study Guides,  
High Passing Rate!  
provides update  
free of charge  
in one year!



<https://www.certpark.com>

**Exam : 7003.1**

**Title :** Avaya Communication  
Server 1000 for Avaya Aura  
Implementation Exam

**Version :** Demo

1.A technician deployed a Communication Server 1000E with dual homing feature configured. Both the T and 2T ports are connected on the media Gateway Controller (MGC) one connection is active to avoid network loops.

Which two statements are true, if the connection to the active port on the MGC is host?

(Choose two)

- A. The MGC will issue a link down error.
- B. The MGC will switch to the active port.
- C. The MGC and CPPM will have no loss of service.
- D. The MGC will switch to the active port after 12 seconds.

**Answer:** B,C

2.A customer has deployed a Communication Server 100 RIs. 7x system at their site. The technician has been asked to add the Call pickup feature to the 100 IP telephone in the sales department.

The customer wants to be sure active calls not lost when the changes are made.

Which Phones Configuration feature can be enabled that will ensure changes to the telephone are not transmitted to the call server until the telephone are busy.?

- A. Bulk change
- B. Courtesy change
- C. Group change
- D. Template change

**Answer:** B

3.A customer wants to build a new Ip node on their Communication Server (CS) 1000E system with three Signaling Servers. This node will support virtual trunks, IP media services, TPS and personnel directories. A technician logs into Elements manager to complete the configuration, after creating and saving the node configuration, the transfer now option chosen, then the servers are selected, the start sync is selected followed by restart application.

What is expected outcome from the system?

- A. The node file will be transferred from Signaling Servers to the call servers, and INI files will be transferred from the call server to the selected servers.
- B. The node file will be transferred from Call Servers to the Signaling servers, and the INI files will be transferred from the Call Servers to the selected servers.
- C. The node file will be transferred from Signaling Servers to the Call Server, and the INI files will be transferred from Call Servers to the Signaling servers.
- D. The node will be transferred from Element manager to the call server, and INI files will be transferred from Element manager to CallServer.

**Answer:** B

4.A customer wants to deploy an Avaya Server (CS) 1000 RIs. 7x system in Avaya Aura solution. They plan to have the system support 50,000 users.

Which system type will meet the customer's needs?

- A. CS 1000E Co-Resident Call Server and Signaling Server
- B. CS 1000E Standard Availability (SA)
- C. CS 1000E High Availability (HA)

D. CS 1000E High Scalability (HS)

**Answer: D**

5.You are installing a new Communication Server 1000E (CS 1000E) SA release 7x system for your customer. They have asked you to implement the corporate Directory Feature during the installation.

- A. SFTP must be disabled in LD 117.
- B. Valid telephony accounts must already exist in Subscriber Manager.
- C. The CS 1000E Call Server must be joined to security domain.
- D. Centralized authentication must be disabled.

**Answer: C**

6.A customer with a Communication Server (CS) 1000E at Rls. 5.5 with two IPMG is upgrading the system to CS 1000E SA release 7 x. The second media gateway includes a media Gateway Controller card with one high density DSP daughter board.

How many voice channels does this configuration provide?

- A. 32
- B. 64
- C. 96
- D. 128

**Answer: D**

7.Refer to the exhibit.

| DN   | Customer |
|------|----------|
| 2000 | 0        |
| 2001 | 0        |
| 2002 | 0        |
| 2003 | 0        |
| 2004 | 0        |
| 2005 | 0        |
| 2006 | 0        |
| 2007 | 0        |
| 2008 | 0        |
| 2009 | 0        |
| 2010 | 0        |
| 2011 | 0        |
| 2012 | 0        |
| 2013 | 0        |
| 2014 | 0        |
| 2015 | 0        |
| 2016 | 0        |
| 2017 | 0        |
| 2018 | 0        |
| 2019 | 0        |
| 2020 | 0        |
| 2021 | 0        |
| 2022 | 0        |
| 2023 | 0        |
| 2024 | 0        |
| 2025 | 0        |
| 2026 | 0        |
| 2027 | 0        |
| 2028 | 0        |
| 2029 | 0        |
| 2030 | 0        |
| 2031 | 0        |
| 2032 | 0        |
| 2033 | 0        |
| 2034 | 0        |
| 2035 | 0        |
| 2036 | 0        |
| 2037 | 0        |
| 2038 | 0        |
| 2039 | 0        |
| 2040 | 0        |
| 2041 | 0        |
| 2042 | 0        |
| 2043 | 0        |
| 2044 | 0        |
| 2045 | 0        |
| 2046 | 0        |
| 2047 | 0        |
| 2048 | 0        |
| 2049 | 0        |
| 2050 | 0        |
| 2051 | 0        |
| 2052 | 0        |
| 2053 | 0        |
| 2054 | 0        |
| 2055 | 0        |
| 2056 | 0        |
| 2057 | 0        |
| 2058 | 0        |
| 2059 | 0        |
| 2060 | 0        |
| 2061 | 0        |
| 2062 | 0        |
| 2063 | 0        |
| 2064 | 0        |
| 2065 | 0        |
| 2066 | 0        |
| 2067 | 0        |
| 2068 | 0        |
| 2069 | 0        |
| 2070 | 0        |
| 2071 | 0        |
| 2072 | 0        |
| 2073 | 0        |
| 2074 | 0        |
| 2075 | 0        |
| 2076 | 0        |
| 2077 | 0        |
| 2078 | 0        |
| 2079 | 0        |
| 2080 | 0        |
| 2081 | 0        |
| 2082 | 0        |
| 2083 | 0        |
| 2084 | 0        |
| 2085 | 0        |
| 2086 | 0        |
| 2087 | 0        |
| 2088 | 0        |
| 2089 | 0        |
| 2090 | 0        |
| 2091 | 0        |
| 2092 | 0        |
| 2093 | 0        |
| 2094 | 0        |
| 2095 | 0        |
| 2096 | 0        |
| 2097 | 0        |
| 2098 | 0        |
| 2099 | 0        |

A Communication Server 1000E Rls. 7 x customer is adding a new Human Resources department with eight IP telephone users. The customer has asked for the telephones to be programmed with consecutive Directory numbers (DNs) from their DID range (2000-2099).

Which numbers sequence is available to meet the customer's requirements?

- A. 2001-2008

- B. 2010-2017
- C. 2050-5057
- D. 5091-2098

**Answer: D**

8.A customer has a Communication Server (CS) 1000E RIs. 7 x system with a System Manager as the primary Security Server that has been designated as a Deployment Server. The application file (.nai) has been uploaded to the deployment manager library. The customer has added an element to the security domain and wants to deploy software applications to the element.

With respect to deployment services, which statement is false?

- A. Deployment Manager has logicto prevent applications beingdeployed on unsupported hardware platform.
- B. MAS application has its own separate .nai file.
- C. IM & Presence application has its own separate .nai file.
- D. MAS can be deployed on the same server as Session Manager.

**Answer: D**

9.A technician is installing the Linux Base Operating System software on the CPDC server for the Avaya Aura system and steps away while the software is loading. When the technician returns, he verifies that the Linux base installation is complete and successfully installed.

What status can the technician verify to ensure the installation is successful?

- A. There is no visible indication available.
- B. The Linux server reboots and the FQDN login prompt appears.
- C. The status of Linux Hardening items is displayed and the system reboots.
- D. The Linux server reboots and the Linux Status Completion screen appears.

**Answer: B**

10.A technician on a Communication Server 1000E SA RIs. 7x cannot get a second media Gateway to register with the Call Server. The call server and Media Gateway 1 sit in the same 19 inch rack while Media Gateway 2 is in another building and connected via the computer IP network Media Gateway 2 can ping the Call Server but cannot register. The network is suspected of having a firewall or port blocking issue.

Which diagnostic tool will help to isolate and identify a firewall or port blocking issue between the call server and Media Gateway 2?

- A. Gryphon Tool
- B. Packet Capture Tool
- C. Linux PPP Tool
- D. Linux Modem Configuration Tool

**Answer: B**