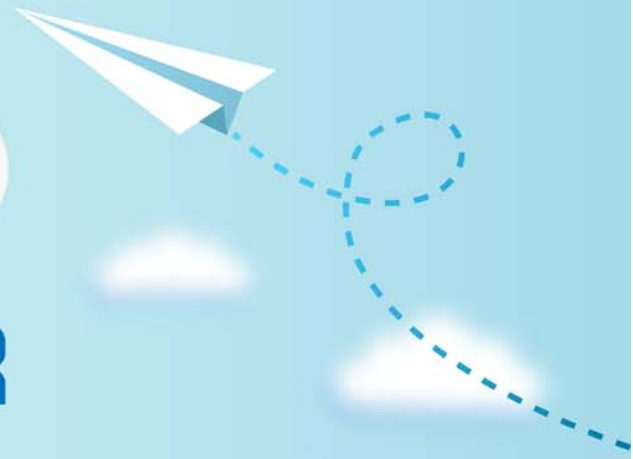


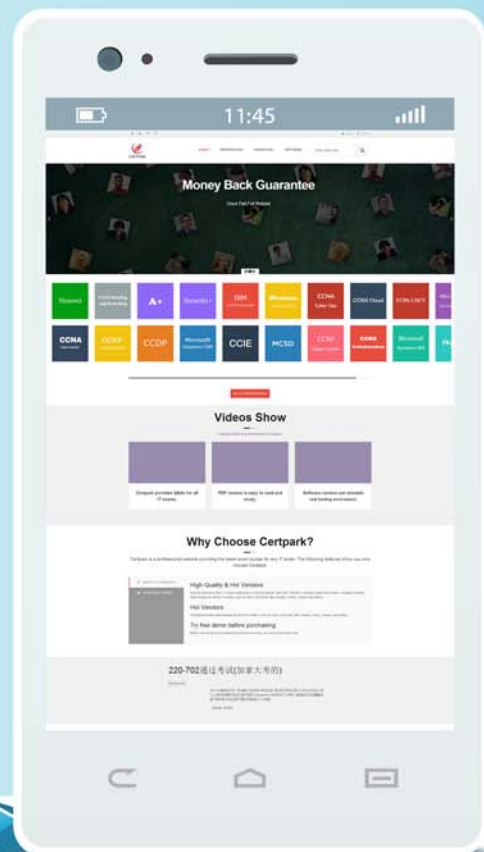
# CERTPARK

## QUESTION & ANSWER



CERTPARK.COM

Accurate Study Guides,  
High Passing Rate!  
provides update  
free of charge  
in one year!



<https://www.certpark.com>

**Exam : 72301X**

**Title : Avaya Aura Communication  
Applications Support  
Certified**

**Version : DEMO**

1.To validate the initial system status of Breeze with the WebRTC Snap-I, which two components should be checked? (Choose two.)

- A. application
- B. configured certificates
- C. cluster status
- D. licensing status
- E. installation status

**Answer: BC**

2.A technician is trying to access the Avaya Aura ® Media Server (AAMS) after receiving a troubleshooting ticket. After failing to enter the system using different web browsers, the technician realizes the incorrect URL was being used.

Which URL must be used to access the AAMS web page?

- A. https: AAMS FQDN or IP address:8443/emlogin
- B. http: AAMS FQDN or IP address:8443/emlogin
- C. https: AAMS FQDN or IP address:443/emlogin
- D. https: SMGR FQDN or IP address:8443/emlogin

**Answer: A**

3.A customer reports that Instant Messaging (IM) and Presence are not working for one or two users. Where would you go to check that IM and Presence have been enabled for the affected users?

A. Use Avaya Aura® System Manager (SMGR) web GUI to access the Engagement Development Platform >

Service Management click on List Presence Users.

B. Use System Manager (SMGR) web GUI to access User > Users Management > Manage Users > Communication Profile. Ensure that the presence profile is enables and that the right presence server is selected.

C. Use SSH to Avaya Breeze ™and run “display user xxxx” where xxxx is the station number.

D. Use Avaya Aura® System Manager (SMGR) web GUI to access User Management > Manage Users > More Actions > Presence Users. Ensure that the presence profile is enables and that the right presence server is selected.

**Answer: B**

4.When a user is forwarded to Avaya Aura® Messaging (AAM), Avaya Aura® Communication Manager (CM) needs to indicate to AAM who the call was originally destined for, so that the message is left in the correct mailbox.

Which SIP header is used to indicate for whom the call was originally destined, and the reason for being forwarded to AAM?

- A. B = history info
- B. To
- C. Request
- D. P-Asserted-Identity

**Answer: C**

5.Which statement about Network Routing Policies in Avaya Aura® Session Manager (SM) is true?

- A. A dial pattern and routing policy are necessary in SM to call from an H323 device to a Basic/Native SIP device (without an Avaya Aura® Communication Manager profile).
- B. A dial pattern and routing policy are necessary in SM to call from a Basic/Native SIP device (without a CM profile) to an H323 device on Avaya Aura® Communication Manager (CM).
- C. A dial pattern and routing policy are necessary in SM to call from an H323 device to an AST device on the same Avaya Aura® Communication Manager (CM).
- D. A dial pattern and routing policy are necessary in SM to call from an AST device to an H323 device on the same Avaya Aura® Communication Manager (CM).

**Answer: B**