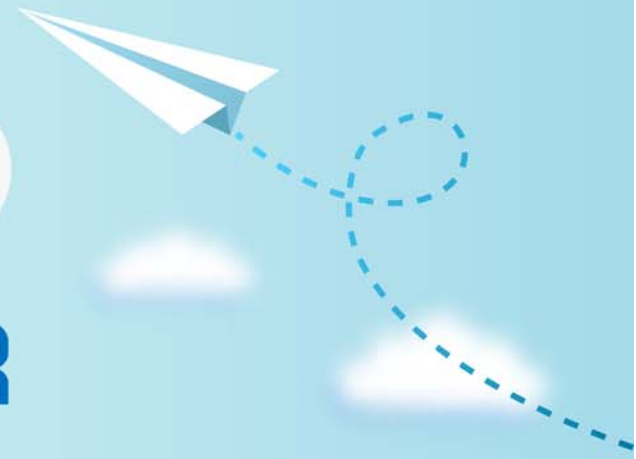


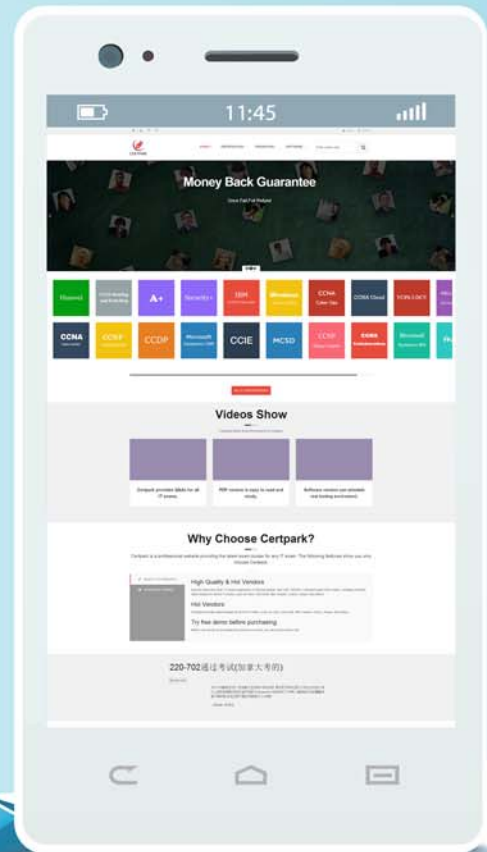
CERTPARK

QUESTION & ANSWER



CERTPARK.COM

Accurate Study Guides,
High Passing Rate!
provides update
free of charge
in one year!



<https://www.certpark.com>

Exam : **72400X**

Title : Avaya Equinox Solution with
Avaya Aura Collaboration
Applications Support Exam

Version : DEMO

1. In a Team Engagement Deployment, which Avaya Equinox® Conferencing component is responsible for mixing and distributing media?

- A. H.323 Gatekeeper
- B. Equinox® User Portal
- C. Equinox® Management Server
- D. Equinox® Media Server

Answer: D

Explanation:

Reference: <https://downloads.avaya.com/css/P8/documents/101045460> (131)

2. Consider an Avaya IXTM Workplace for Web Client connecting to a virtual meeting room from a public network.

Which two components within the call flow will be involved in the media path? (Choose two.)

- A. Avaya Aura® Media Server
- B. Avaya Auta® Web Gateway
- C. Equinox® Media Server
- D. Session Manager

Answer: BC

3. Which component hosts Unified Portal in a Team Engagement (TE) deployment of the Avaya Equinox® Conferencing solution?

- A. Avaya Aura® Web Gateway
- B. System Manager Server
- C. Session Manager Server
- D. Equinox® Management Server

Answer: A

Explanation:

Reference:

https://documentation.avaya.com/bundle/EquinoxConferencing_DeployingAvayaEquinoxSolution_r9102/page/Checklist_for_Deploying_Equinox_Mng_TE.html

4. Which two options are available for the traceSM command? (Choose two.)

- A. SDP
- B. SIP
- C. WEBRTC
- D. STUN/TURN/ICE
- E. TLS Handshaking

Answer: BC

Explanation:

Reference:

https://documentation.avaya.com/bundle/AvayaDeviceAdapterSnapinReference_r8.0/page/TraceSM_utility.html

5. From Release R8.0.1, which statement regarding Multimedia Messaging is true?

- A. It is installed on a Windows Server.
- B. Its capability is provided by the Avaya Multimedia Messaging (AMM) Snap-In.
- C. It is installed on a standalone Linux Server.
- D. Its capability is provided by the Presence Services Snap-In.

Answer: D