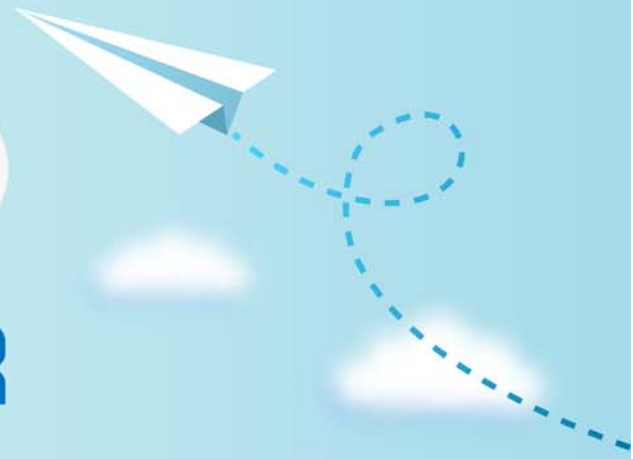


# CERTPARK

QUESTION & ANSWER



CERTPARK.COM

Accurate Study Guides,  
High Passing Rate!  
provides update  
free of charge  
in one year!



<https://www.certpark.com>

**Exam** : **74-678**

**Title** : Designing and Providing  
Microsoft Volume Licensing  
Solutions to Large  
Organisations

**Version** : Demo

## 1. Topic 1, A.Datum Corporation

### Overview

A Datum Corporation is a manufacturing company that has a main office in New York City, sales offices throughout the United States, and a manufacturing plant in Seattle.

A Datum has 3,000 users. One hundred and fifty users work at the main office in an administrative role, 650 users work in the sales offices, and 2,200 users work in the manufacturing plant.

### Existing Environment

#### Current Infrastructure

A Datum runs an on-premises server farm that is lightly virtualized. All servers run Windows Server 2008 R2.

A Datum uses Microsoft Lync Server 2010, Microsoft SharePoint Server 2010, and Microsoft Exchange Server 2010. Various versions of Microsoft SQL Server are used heavily across the server farm both as an infrastructure product and as a data warehouse tool.

The server farm contains 12 servers. Six of the servers have two processors with quad cores. Six of the servers have four processors with quad cores.

Half of the servers are managed by using Microsoft System Center 2010.

Each user at the main office has a desktop computer that runs Windows 7 Professional. The computers have Microsoft Office Professional Plus 2007 installed. Each user at the sales offices has a laptop that runs Windows 7 Professional. The laptops have Office Professional Plus 2010 installed.

Windows 7 licenses were acquired when the hardware was acquired. The users in the manufacturing plant do not have access to any devices except for terminals that run a line-of-business application.

#### Current Licensing Solution

A Datum recently signed an Enterprise Agreement that includes Office Professional Plus, Windows Enterprise Upgrade, and Microsoft Core CAL Suite licensed per user.

Currently, all of the licenses for SQL Server are assigned to long-term workloads.

### Requirements

#### Business Goals

A Datum spent a significant amount of time developing a custom application that will be used by hundreds of the company's partners and suppliers. The application will always run on the latest version of SQL Server and SharePoint Server. A Datum wants the application to be available to the users immediately.

A Datum wants a cost-effective solution for the manufacturing plant users to access email and to view the company's intranet site.

#### Planned Changes

Currently, the server farm runs entirely on-premises.

A Datum plans to extend the server farm to the cloud and is considering completely moving some workloads to the cloud. In addition, the company plans to use hosted services for the productivity servers in the next 24 to 36 months. The company expects the existing on-premises server farm to be heavily virtualized within three months. Each server will host eight to 20 virtual machines.

A Datum wants to improve the manageability and control of the users' desktops. In the short term, the

company will deploy Windows 8.1 Enterprise and Office Professional Plus 2013 internally. During the next six months, A Datum plans to implement a Virtual Desktop Infrastructure (VDI) by using Remote Desktop Services (RDS) on Windows Server 2012 R2. In line with the VDI implementation, all of the sales office users will be issued a tablet. A Datum wants to enable the users to work from their home computer as well, as the need arises. In addition, the company plans to enable a Bring Your Own Device (BYOD) strategy.

Which two goals are met by the company's current licensing solution given the planned changes? Each correct answer presents part of the solution.

- A. A Datum must run the most up-to-date versions of the desktop platform products to access the custom application.
- B. A Datum wants the users to be able to access their corporate desktop from their home computer.
- C. A Datum wants to deliver Windows and Office in a virtual desktop to the users.
- D. A Datum wants to be able to install multiple virtual desktops on the device of each user.
- E. A Datum wants the flexibility to deploy virtual desktops to the cloud.

**Answer:** B,C

**Explanation:**

Not A: The latest versions can not be used.

Not D, not E: No current cloud licensing exists.

\* Scenario:

/ Current Licensing Solution

A Datum recently signed an Enterprise Agreement that includes Office Professional Plus, Windows Enterprise Upgrade, and Microsoft Core CAL Suite licensed per user.

Currently, all of the licenses for SQL Server are assigned to long-term workloads.

/ A Datum uses Microsoft Lync Server 2010, Microsoft SharePoint Server 2010, and Microsoft Exchange Server 2010. Various versions of Microsoft SQL Server are used heavily across the server farm both as an infrastructure product and as a data warehouse tool.

/ Business Goals

A Datum spent a significant amount of time developing a custom application that will be used by hundreds of the company's partners and suppliers. The application will always run on the latest version of SQL Server and SharePoint Server. A Datum wants the application to be available to the users immediately.

2.A Datum needs to identify whether the company has the rights to assign some of its SQL Server 2014 licenses to Microsoft Azure to run SQL Server 2014 on virtual machines on Azure.

Which document should the company review?

- A. Volume Licensing Online Services Terms (OST)
- B. Microsoft Product List
- C. Volume Licensing Product Use Rights (PUR)
- D. Microsoft Service Provider Use Rights (SPUR)

**Answer:** A

**Explanation:**

Online Services Terms (OST)

When you subscribe to an Online Service through a Microsoft Volume Licensing program, the service terms for how you can use the service are defined in the Volume Licensing Online Services Terms (OST) document, Product List document, and program agreement

3.A Datum plans to implement the VDI.

You need to recommend a solution to ensure that the sales office users can access their corporate desktop from a company-owned iPad. The solution must be the most cost-effective solution today and must ensure that the company meets the licensing requirements of the planned IT strategy.

Which two licenses should you include in the recommendation? Each correct answer presents part of the solution.

- A. A Windows Virtual Desktop Access (VDA) license for each tablet
- B. A Windows Companion Subscription (CSL) license for each primary device
- C. A Windows 8.1 Enterprise Upgrade license for each tablet
- D. An RDS User CAL for each sales office user

**Answer:** A,D

**Explanation:**

A: VDA licensing is the recommended license for VDI access devices that do not qualify for SA. VDA provides organizations with the ability to license Windows for use via devices that do not traditionally come with a Windows license, such as thin clients, smartphones, and tablet devices. Organizations can also use VDA to license devices that the organization does not own, such as employees' home PCs and contractor devices.

D: The RDS CAL is the primary license for Microsoft VDI. It offers the flexibility to deploy both VDI and RDS Session Virtualization so that you can provide access to full desktop and shared desktop experiences. You must purchase one RDS CAL for each device or user that accesses VDI. A

\* Scenario: A Datum plans to implement a Virtual Desktop Infrastructure (VDI) by using Remote Desktop Services (RDS) on Windows Server 2012 R2. In line with the VDI implementation, all of the sales office users will be issued a tablet. A Datum wants to enable the users to work from their home computer as well, as the need arises. In addition, the company plans to enable a Bring Your Own Device (BYOD) strategy.

4.You need to recommend a solution to activate Windows 8.1 Enterprise.

What should you include in the recommendation?

- A. The Volume Activation Management Tool (VAMT)
- B. Key Management Service (KMS)
- C. Multiple Activation Key (MAK) independent activation
- D. Multiple Activation Key (MAK) proxy activation

**Answer:** A

**Explanation:**

\* Scenario: the company will deploy Windows 8.1 Enterprise

\* The Volume Activation Management Tool (VAMT) enables network administrators and other IT professionals to automate and centrally manage the Windows®, Microsoft® Office, and select other Microsoft products volume and retail-activation process. VAMT can manage volume activation using Multiple Activation Keys (MAKs) or the Windows Key Management Service (KMS).

5.A Datum purchases Windows 8.1 Enterprise Upgrade licenses through their current agreement.

What are three benefits of these licenses compared to the Original Equipment Manufacturer (OEM) licenses? Each correct answer presents a complete solution.

- A. License Mobility rights

- B. Rights to reassign licenses
- C. Re-imaging rights
- D. Perpetual usage rights
- E. Windows Virtual Desktop Access (VDA) rights

**Answer:** B,D,E

**Explanation:**

B: Windows Enterprise use rights are bound to the existing PC if SA is allowed to expire. And as before, Windows Enterprise edition upgrade licenses can be reassigned to a replacement device while SA is active, as long as the replacement device has a "qualifying OS."