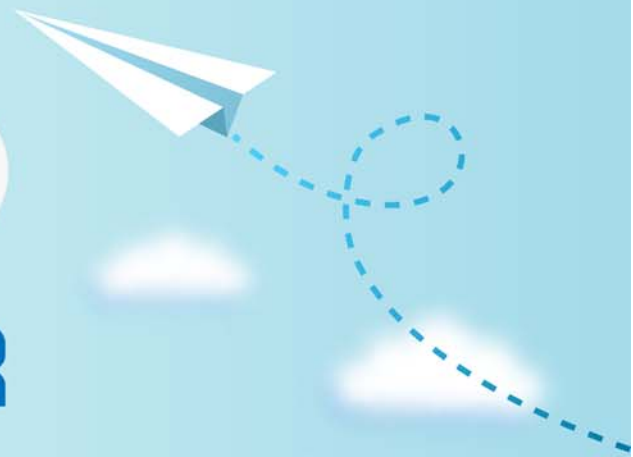


CERTPARK

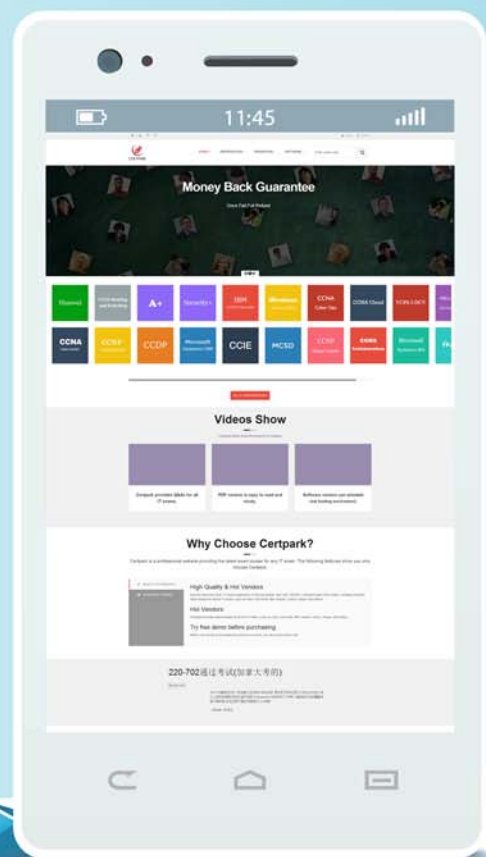


QUESTION & ANSWER



CERTPARK.COM

Accurate Study Guides,
High Passing Rate!
provides update
free of charge
in one year!



<https://www.certpark.com>

Exam : **9A0-359**

Title : **Adobe Flash CC ACE**

Version : **DEMO**

1. Your Timeline isn't wide enough to display object timing.

What should you do?

- A. Split the Timeline into two sections.
- B. Zoom farther away from the Timeline.
- C. Click the Show/Hide All Items button on the Timeline.
- D. Stretch the Timeline vertically.

Answer: B

2. You have created a Training Assessment and find that you need to adjust the timing for a number of objects on a slide. The timeline is NOT visible.

What should you do?

- A. Right-click the slide background and choose Show Timeline.
- B. Choose View > Show Timeline.
- C. Choose Window > Toolbars > Show Timeline.
- D. Choose Window > Timeline.

Answer: D

3. You have added a text caption to a slide. When you preview the slide, you notice that the text caption disappears before the slide ends.

What should you do to make the text caption stay on stage for the entire slide duration?

- A. Add one more text caption, add the same text to it, and drag it to the end of the timeline.
- B. Add the text caption on the master slide and select Master Slide Objects on Top.
- C. Right-click the text caption on the timeline and select Show for the rest of the slide.
- D. Right-click the text caption on the timeline and select Sync with Playhead.

Answer: C

4. You have created a splash screen for your course, which starts with an animation. You want the Start Course button to appear only after the animation is over.

What should you do?

- A. Associate a conditional action to make this work.
- B. Right-click the button on the timeline and select Sync with Playhead.
- C. Right-click the button on the timeline and select Show for the rest of the slide.
- D. Drag the start of the button to the end of the animation on the timeline.

Answer: D

5. You are adding effects to your objects and find it cumbersome to keep switching from the Timeline panel to Effects panel to match the timing.

What should you do to reduce your efforts?

- A. Switch to Effects workspace.
- B. Switch to Review workspace.
- C. Take a screenshot of the Timeline panel and refer to it while working with the Effects panel.
- D. First add all the effects and then synchronize the timing.

Answer: A