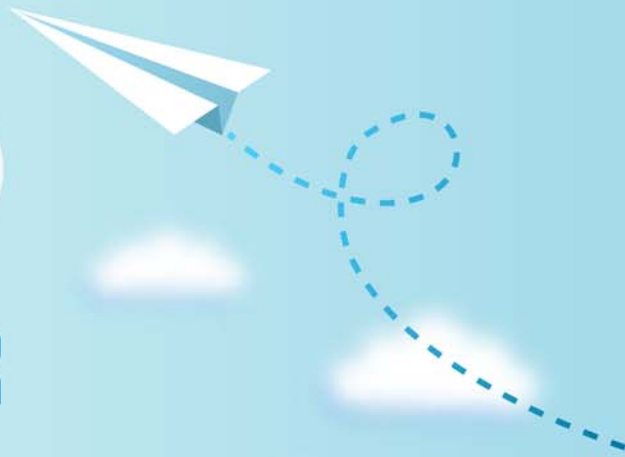


CERTPARK

QUESTION & ANSWER



CERTPARK.COM

Accurate Study Guides,
High Passing Rate!
provides update
free of charge
in one year!



<https://www.certpark.com>

Exam : **9L0-528**

Title : **ACTC 10.10 Recertification**

Version : **DEMO**

1. Your Mac is started up from its OS X Recovery partition. You need to repair the hard disk. Which procedure will let you perform the repair?

- A. Select Disk Utility in the OS X Utilities window, click Continue, select the hard disk, and click Repair Disk.
- B. In the OS X Utilities window, click Select Volume, click Continue, select the hard disk, and click Verify & Repair.
- C. Quit the Recovery app, then open Disk Utility from the /Applications/Utilities/ folder on the OS X Recovery partition, select the hard disk, and click Repair Disk.
- D. Quit the Recovery app, then open Disk Utility from the /Applications/Utilities/ folder on the Macintosh HD partition, select the hard disk, and click Repair Disk.

Answer: A

2. Which dynamic service discovery protocol does OS X use to discover devices on a network?

- A. SLP
- B. AppleTalk
- C. Bonjour
- D. DynDNS

Answer: C

3. Review the screenshot, and then answer the question below.



You connect an HFS+-formatted FireWire hard disk to a Mac, and configure it as shown in the screenshot. What will happen the next time a standard user attempts to mount the hard disk?

- A. The disk will mount, and the user will be able to read, modify, and delete any file on the disk.
- B. The user will be required to enter an administrator password to mount the disk; once the disk is mounted, the user will be able to read any file on the disk, but will be required to re-enter an administrator password to modify or delete files.
- C. The disk will mount, and the user will be able to read any file on the disk; the user will be required to enter an administrator password to modify or delete files on the disk.
- D. The user will be required to enter an administrator password to mount the disk; once the disk is mounted, the user will be able to read, modify, and delete any file on the disk.

Answer: A

4. In OS X Mountain Lion, where do most applications that are NOT sandboxed store their user-specific preferences?

- A. In a preferences database file in /Library/
- B. In .DS_Store files, at the root level of ~/
- C. In a preferences database file in ~/Library/
- D. In application-specific preferences files in ~/Library/Preferences/

Answer: D

5. Migration Assistant is open on a Mac with OS X Mountain Lion installed. It CANNOT migrate user files from _____.

- A. a Time Machine backup on a connected USB hard disk
- B. an archive stored on iCloud
- C. another volume on the same computer
- D. a Windows XP computer with Service Pack 3 or later installed

Answer: B