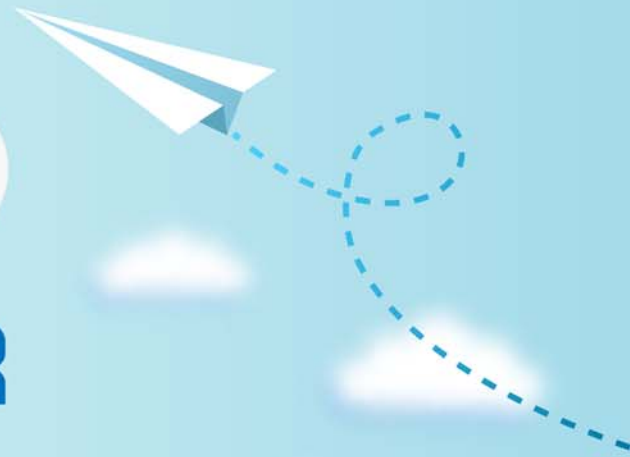


CERTPARK



QUESTION & ANSWER



CERTPARK.COM

Accurate Study Guides,
High Passing Rate!
provides update
free of charge
in one year!



Exam : **ACP-01301**

Title : Autodesk Certified
Professional - Revit for
Architectural Design

Version : DEMO

1.To place a schedule on a sheet, you_____.

- A. Define the schedules sheet location in its view properties.
- B. Define the schedule as a hosted view in the sheets properties.
- C. Click on the schedule in the project browser and drag it onto the sheet.
- D. Right-click on the schedules in the Project Browser and click Send to Sheet.

Answer: C

2.Type parameters for stairs are include_____.

- A. Actual number of risers
- B. Monolithic Stairs
- C. Stringers
- D. Break Symbol

Answer: B,C,D

3.Where do you set instance parameters for buildings and views?

- A. Quick Access Toolbar
- B. Properties Palette
- C. Options Bar
- D. InfoCenter

Answer: B

4.You can decrease the time taken by the rendering by setting Quality to a fast speed value in the Rendering dialog box.

- A. True
- B. False

Answer: A

5.What is the first step that you perform to change a section view to a detail view?

- A. Select the section or callout symbol
- B. On the View menu, click View Properties
- C. Create a new section or callout view
- D. Open the parent view

Answer: A