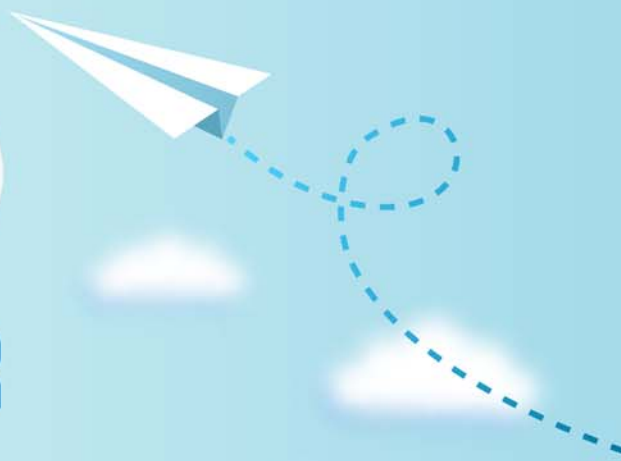


CERTPARK



QUESTION & ANSWER



CERTPARK.COM

Accurate Study Guides,
High Passing Rate!
provides update
free of charge
in one year!



<https://www.certpark.com>

Exam : **ANVE**

Title : **Axis Network Video Exam**

Version : **Demo**

1.Which of the following statements are true for H.264? (Choose two)

- A. The size of an I-frame depends on the preceding P-frame
- B. Increased motion in a scene means increased bit rate
- C. Group of Video (GOV) length is directly affected by the sizes of the I- and P-frames
- D. A P-frame references preceding and succeeding P-frames
- E. Longer GOV length means reduced bit rate

Answer: B,E

2.What is the main purpose of the Arctic Temperature Control functionality?

- A. To protect the camera electronics
- B. To protect the camera mechanics
- C. To protect the camera lens
- D. To protect the camera power

Answer: B

3.Which is true regarding the use of a smoked (tinted) dome instead of a clear dome?

- A. Decreases color fidelity
- B. Decreases field of view
- C. Disables infrared capabilities
- D. Reduces light sensitivity

Answer: D

4.A company is looking for a dome designed to withstand vibrations inherent to transportation.

Which of the following cameras should be recommended?

- A. AXIS P3344-VE
- B. AXIS M3014
- C. AXIS M3114-R
- D. AXIS P1344

Answer: C

5.Which is a benefit of using VLANs and IP subnets?

- A. An encrypted communication link is established over the internet, allowing surveillance video to be securely viewed off-site
- B. The network provides end-to-end encryption to prevent malicious users from intercepting network traffic
- C. The network will only allow access from authorized devices, eliminating the risk that malicious users disconnect cameras to intercept network traffic
- D. Network surveillance video can be kept separate from other network traffic, reducing the risk that malicious users will intercept it

Answer: D