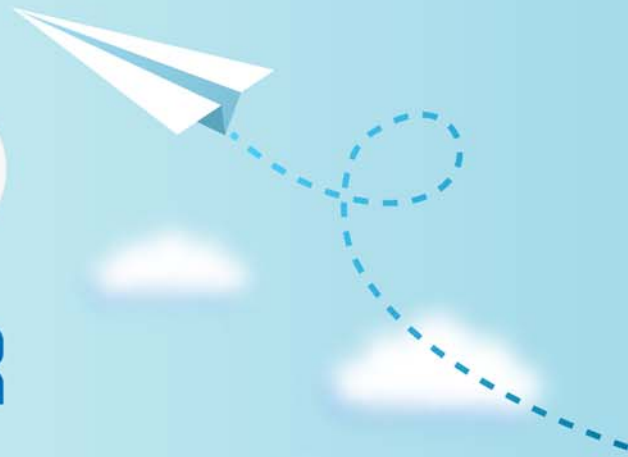


# CERTPARK

## QUESTION & ANSWER



CERTPARK.COM

Accurate Study Guides,  
High Passing Rate!  
provides update  
free of charge  
in one year!



<https://www.certpark.com>

**Exam** : **API-580**

**Title** : Risk Based Inspection  
Professional

**Version** : DEMO

1.The data validation step stresses the need for a knowledgeable individual.

- A. To comparing data from the inspections to the expected deterioration mechanism and rates
- B. To compare the results with previous measurements on that system
- C. Similar systems at the site or within the company or published data
- D. All of the above

**Answer: D**

2.Following are the critical variables for deterioration mechanism except

- A. Material of construction
- B. Process operating
- C. Start up and shut down conditions
- D. Insulation

**Answer: D**

3.If a qra has been prepared for a process unit, the analysis can borrow extensively from this effort.

- A. Rbi consequence
- B. Rbi likelihood
- C. Rbi probability

**Answer: C**

4.If the probability and consequence combination (risk) is high enough to be unacceptable, then

- A. A mitigation action to predict or prevent the eventis recommended.
- B. A mitigation action to predict or prevent the event isnot recommended
- C. Warrant to analyze risks involved

**Answer: A**

5.A Rbi analysis shares many of the techniques and data requirements with a\_\_\_\_\_.

- A. Qra
- B. Pha
- C. Hazop
- D. Event tree

**Answer: A**