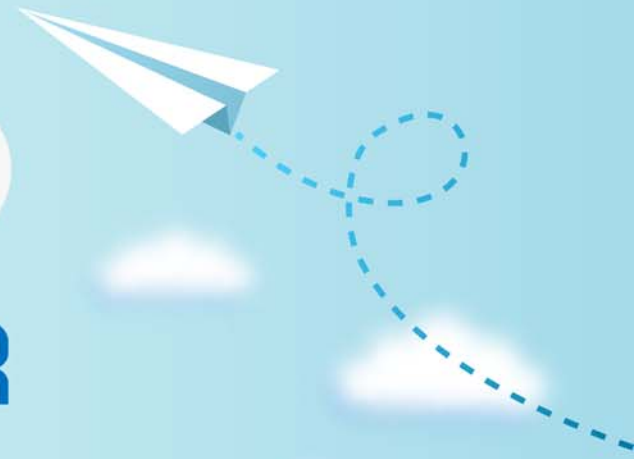


CERTPARK

QUESTION & ANSWER



CERTPARK.COM

Accurate Study Guides,
High Passing Rate!
provides update
free of charge
in one year!



<https://www.certpark.com>

Exam : C1000-023

Title : IBM Business Critical V2

Version : DEMO

1.What can be reused in an IBM DS8870 to IBM DS8880 conversion?

- A. Connectors to facility power
- B. Flash Cards in HPFE
- C. SKLM servers
- D. Earthquake Resistance Kit

Answer: A

2.An IBM z/OS customer with a 10 TB IBM DS8886 is concerned with its collocation cost due to the footprint used by the current storage that is due to refresh.

How does the IBM DS8880 family help this customer?

- A. It provides NVMe connectivity
- B. It ships in a 19 inch rack
- C. It features high-density drawers with 60 disks.
- D. It supports Data Reduction Pools

Answer: B

3.When implementing IBM DS8880 encryption, which mechanism does the IBM DS8880 use to configure access to the key servers

- A. XCLI
- B. CIM Agent
- C. Enterprise Storage Server Network Interface
- D. DS Storage Management GUI

Answer: D

4.Which solution for the IBM DS8880 and IBM Z environments manages complex multisite HA and DR?

- A. IBM Storage Insights Pro
- B. IBM GDPS
- C. IBM Copy Services Manager
- D. IBM z/OS Workload Manager

Answer: B

Explanation:

GDPS is a solution that manages complex multisite DR and HA IBM Z environments

<https://www.redbooks.ibm.com/redpapers/pdfs/redp5186.pdf>

5.An IBM DS8880 customer using System i has a critical application with 21 TB allocated on 800 GB Flash Drives at the primary site. Now the customer is building a secondary site 500 kilometers away for disaster recovery purposes.

What is the total capacity required to implement this solution?

- A. 21 TB of consistency space is required at the secondary site
- B. 21 TB plus additional consistency space are required at the secondary site
- C. 21 TB are required at the secondary site and consistency space is required at the primary site
- D. 21 TB on 800 GB flash drives are required at the secondary site

Answer: A