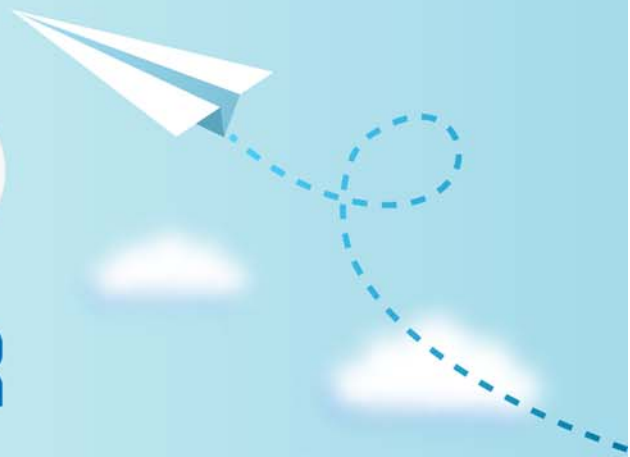


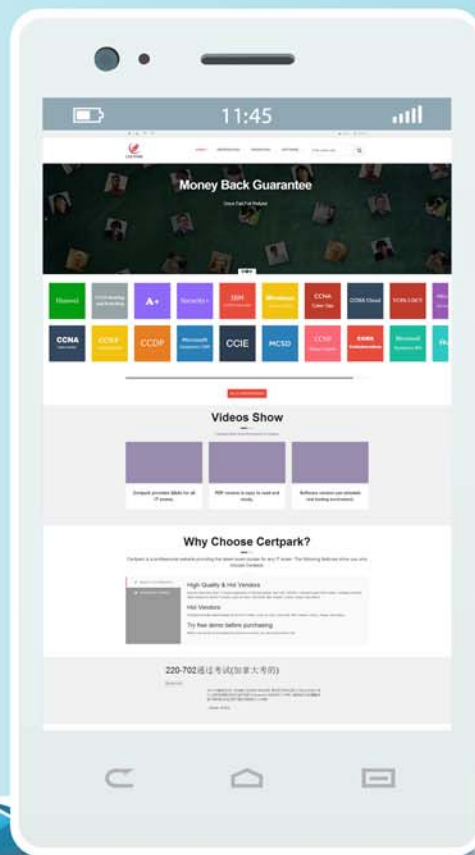
# CERTPARK

QUESTION & ANSWER



CERTPARK.COM

Accurate Study Guides,  
High Passing Rate!  
provides update  
free of charge  
in one year!



**Exam : C1000-103**

**Title : IBM Cloud Pak for  
Multicloud Management  
v1.3 Solution Architect**

**Version : DEMO**

1.What is the core benefit of using IBM Cloud Paks?

- A. Full software stack support, ongoing security, compliance, and version compatibility
- B. Continuous Integration and Continuous Delivery (CI/CD) tools for security
- C. Dedicated support team for application migration to IBM Cloud
- D. OpenStack integration out of the box

**Answer: A**

2.What entities can be discovered by IBM Cloud Pak for Multicloud Management service discovery if configured correctly?

- A. Kubernetes services, Kubernetes ingresses, Istio gateways
- B. Kubernetes services, Kubernetes APIs, DNS routes
- C. Kubernetes services, Kubernetes ingresses, OpenShift routes
- D. Kubernetes services, Istio gateways, Datapower gateways

**Answer: C**

3.What are two components of the Cloud Pak for Multicloud Management monitoring module?

- A. Web Servers
- B. Data Collectors
- C. Metrics
- D. Agents
- E. Listeners

**Answer: CE**

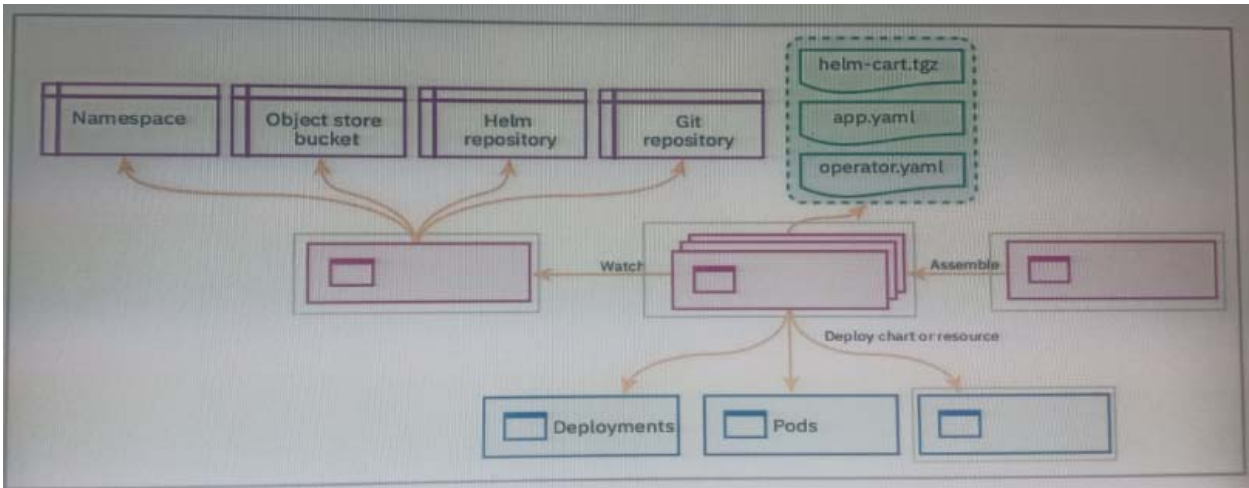
4.When provisioning a Middleware Template, a repository contains separate directories for available middleware. Under this directory, which file is used to customize the deployment experience?

- A. camvariables.json
- B. recipes.json
- C. components.json
- D. metadatA.rb

**Answer: D**

5.HOTSPOT

Click on the Channel resource in the diagram below.



**Answer:**