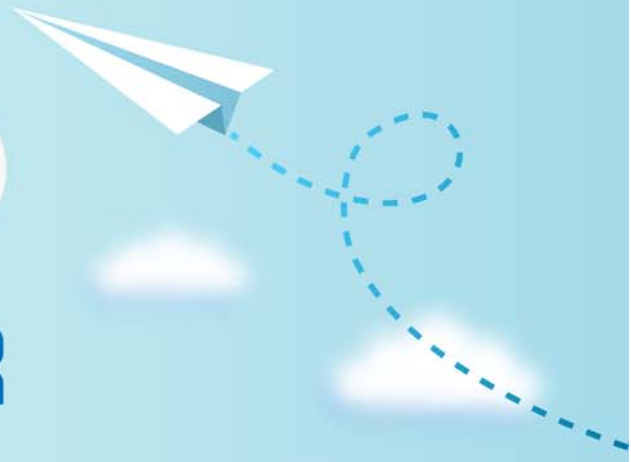


# CERTPARK



## QUESTION & ANSWER



CERTPARK.COM

Accurate Study Guides,  
High Passing Rate!  
provides update  
free of charge  
in one year!



<https://www.certpark.com>

**Exam** : **C1000-143**

**Title** : IBM Cloud Pak for Watson  
AIOps v3.2 Administrator

**Version** : DEMO

1.Which statement is true about a topology merge rule?

- A. Specifies that the value of a resource field should be copied to the matchTokens field so that it can be used to merge events to resources
- B. Merges two or more events together and relate them to the same topology resource
- C. Specifies that the value of a resource field should be copied to the tags field so that it becomes searchable in the UI
- D. Specifies that two resources from different topology Observer jobs in fact refer to the same physical device

**Answer: C**

2.Which statement is true about Event Manager (NOI) in an on-premises installation?

- A. Event Manager Components can only be started by using the Installation Manager.
- B. Start-up scripts can be created to automatically start the various Event Manager components.
- C. Startup GUI can be installed to automatic start the various components.
- D. Event Manager components can only be started ally by using Linux or Windows commands.

**Answer: A**

3.What is the default duration of the CA certificate used by IBM foundational services?

- A. 120 days
- B. Two years
- C. 90 days
- D. One year

**Answer: B**

4.Which statement is true about topology management in Cloud Pak for Watson AIOps?

- A. It has an ETSI interface (European Telecommunications Standards Institute)
- B. It enables the real-time and historical visualization of highly dynamic and distributed infrastructure
- C. It provides a holistic view into geographic data
- D. It provides Root Cause Analysis (RCA)

**Answer: B**

5.What does the Resource filter toolbar in Topology Manager reduce?

- A. Entity types in the Topology view
- B. Observer loads
- C. Resources exported from the Topology Manager
- D. Resources that an instance of Topology Manager holds

**Answer: A**