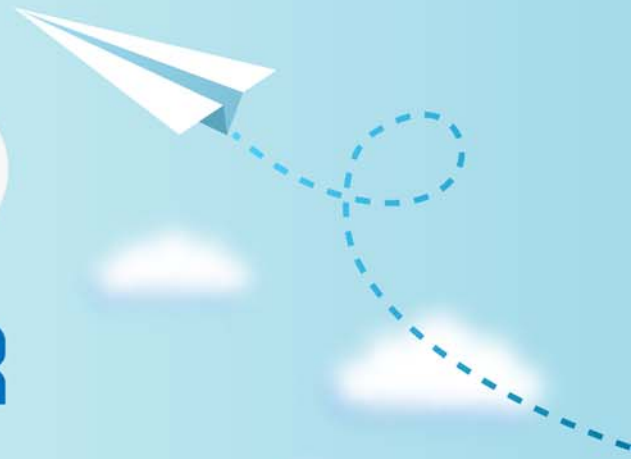


CERTPARK



QUESTION & ANSWER



CERTPARK.COM

Accurate Study Guides,
High Passing Rate!
provides update
free of charge
in one year!



<https://www.certpark.com>

Exam : **C2040-410**

Title : IBM Notes and Domino 9.0
Social Edition Application
Development B

Version : DEMO

1.Which control, used to dynamically switch content, includes support to code the Dynamic Content display using a Simple Action, client-side or server-side JavaScript?

- A. Switch
- B. Dynamic Content
- C. Multi-image Output
- D. Dynamic View Panel

Answer: B

2.When he saved this mobile XPage John received a compile-time error indicating a required property for the <xe:singlePageApp> control is not present.

```
<?xml version="1.0" encoding="UTF-8"?>
<xp:view xmlns:xp="http://www.ibm.com/xsp/core" xmlns:xe="http://www.ibm.com/xsp/core" >
    <xe:singlePageApp id="singlePageApp1">
        <xe:appPage id="appPage1" pageName="startPage">
            Hello Mobile World!
        </xe:appPage>
    </xe:singlePageApp>
</xp:view>
```

What property and value must John add to the <xe:singlePageApp> start tag to correct this error?

- A. startAppPage="appPage1"
- B. startAppPage="startPage"
- C. selectedPageName="appPage1"
- D. selectedPageName="startPage"

Answer: D

3.Which statement is true about the Application Layout control?

- A. The Application Layout control provides a consistent interface when added directly to each XPage in an application.
- B. To render properly, the Application Layout control must implement one of the oneuiv2.1 themes or a theme that extends a oneuiv2.1 theme.
- C. The Application Layout control includes a total of three facet areas for adding content (left, center and right columns) and three bar areas for icons, titles, links and drop down menus.
- D. When the Application Layout control is enabled for an application each XPage will include a left, center and right column area with the same dimensions to provide a consistent user interface across the application.

Answer: B

4.John added a Dynamic View Panel to the CustomersViews XPage to switch display to any one of several views in the Customers application. He set the pageName property to the CustomerDocument XPage to identify the XPage to open when a customer name is selected from the displayed view in the Dynamic View Panel control.

What must John do to have the selected customer document open in read mode on the CustomerDocument XPage?

- A. For the Dynamic View Panel, set the openDocAsReadOnly to "true".

- B. Nothing. The selected document in a Dynamic View Panel will by default open in read mode.
- C. For the Domino Document data source on the CustomerDocument XPage set the openDocAsReadonly to "true".
- D. Code the onColumnClick event of the Dynamic View Panel control with the Open Page simple action and set the target property to"openDocument".

Answer: D

5.Which statement is true for the Single Page Application control for use on a mobile XPage?

- A. The XML tag for the Single Page Application control is <xp:singlePageApp>.
- B. The XML tag for the Single Page Application control is <xc:singlePageApplication>.
- C. The Single Page Application control is used only when the mobile XPage includes a single mobile page.
- D. There must be only one Single Page Application control as the container for all of the Application Page controls on the mobile XPage.

Answer: D