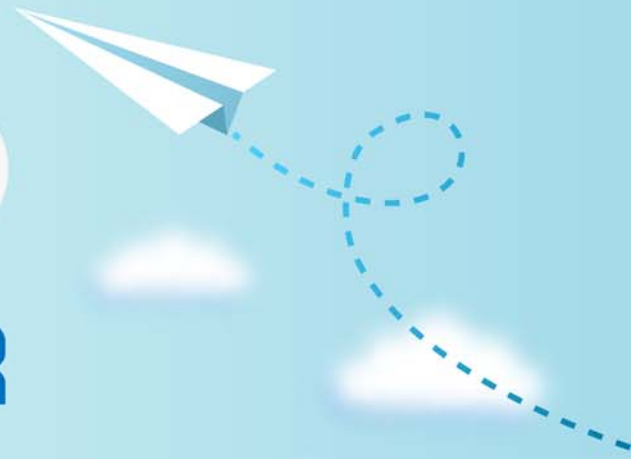


CERTPARK

QUESTION & ANSWER



CERTPARK.COM

Accurate Study Guides,
High Passing Rate!
provides update
free of charge
in one year!



<https://www.certpark.com>

Exam : C2070-448

**Title : IBM Content Collector (ICC)
v2.2**

Version : Demo

1.Where is the Content Collector Outlook Extension installed?

- A. On the ICC Server only.
- B. On the Exchange Server.
- C. On the client workstations only.
- D. On the client workstations and ICC Server.

Answer: C

2.The Outlook Web Access Service must be installed on a server running which web service.?

- A. Apache
- B. Exchange
- C. Websphere
- D. Internet Information Service (IIS)

Answer: D

3.What is the command line syntax for installing Content Collector Notes Client Extension in silent mode?

- A. install.exe -i SILENT <full_path_to_response_file> -f
- B. install.exe SILENT -f <full_path_to_response_file> -i
- C. install.exe -i SILENT -f <full_path_to_response_file>
- D. install.exe <full_path_to_response_file> -i SILENT -f

Answer: C

4.What is the first step required to enable offline repositories in Lotus Domino?

- A. Replace the design of your mail database by the mail template that is enabled for Content Collector.
- B. Specify the recipients of the user notification memo and add any information that you want to communicate. Then send the memo.
- C. From the inbox of your mail database, select Actions > Install IBM InfoSphere Content Collector Offline Repository to create a memo.
- D. Right-click the Install IBM InfoSphere Content Collector Offline Repository hotspot in the user notification memo and then click Edit. At the bottom of the window that opens, add a blank line in front of the On Error Goto processError line to suppress any No signature warnings.

Answer: A

5.When using the File System Source Connector to process files on other machines, what permissions are needed?

- A. Write access to the target content files only.
- B. Administrator privileges on the local ICC server only.
- C. Read and write access to the target P8 or CM8 repository.
- D. Full access rights to domain machines where the target content files are stored.

Answer: D

6.When is the IBM FileNet P8 Connector definition created?

- A. During the software installation process.
- B. During the installation of the prerequisites.
- C. When you run the Initial Configuration wizard.

D. When opening Configuration Manager for the first time.

Answer: C

7."Client Configuration" settings are used in conjunction with which of the following Connectors?

- A. All Connectors
- B. Lotus Domino and Microsoft Exchange
- C. IBM Content Manager and IBM FileNet P8
- D. File System Source and Microsoft SharePoint

Answer: B

8.Which of the following is NOT required when performing a change in message queue directory for the SMTP Receiver?

- A. Enabling SMTP Authentication.
- B. Stopping and starting the SMTP Receiver service.
- C. Making sure that no active antivirus scans are running on the selected directory.
- D. Selecting a directory where STMP Receiver stores the emails processed by SMTP connector.

Answer: A

9.ICC uses a Lotus Notes address book to resolve mailbox IDs. How is it configured using the ICC Configuration Manager?

- A. In the "address" tab of each collector task within mail archiving tasks, under "address book usage", select either of "Public" or "Private".
- B. In the "address" tab of the Lotus Notes email connector, under "address book usage", select "Public".
- C. In the "address" tab of the Lotus Notes email connector, enter the host name of the active directory server to be used.
- D. Modify the location of the Notes address book to the notes.ini file, that is used by ICC, identified by the tab "connection" of the Lotus Notesemail connector.

Answer: B

10.What service(s) must be restarted when you change the user account of the E-Mail Connector service and the Web Applications service?

- A. IBM ICC Web Applications service.
- B. IBM ICC Information Center service and IBM ICC Web Applications service.
- C. IBM ICC E-Mail Connector service and IBM ICC Task Routing Engine service.
- D. IBM ICC Task Routing Engine service and IBM ICC Web Applications service.

Answer: D

11.You want to enable a Notes template for archiving using the ICC setup tools. If this is a template for a non mail application, which entry does NOT need to be provided?

- A. The template name.
- B. Availability of the menu entry for the Search function.
- C. Availability of the menu entry for the Restore function.
- D. The name of the Content Collector Actions submenu.

Answer: B

12.If the default ports for the ICC web application are already in use, which WebSphere Application Server configuration file needs to be modified to change the port numbers?

- A. key.p12
- B. web.xml
- C. notes.ini
- D. portdef.props

Answer: D

13.If you use DB2 Content Manager as your repository, what must be installed on the library server prior to running the initial configuration wizard?

- A. DB2 Text Support
- B. DB2 Control Center
- C. FileNet Java Client API
- D. Content Collector Text Search Support

Answer: D

14.When using an IBM FileNet P8 Repository, what must happen after modifying the styleset files that are used to create an index?

- A. Stop and restart the ICC FileNet P8 Repository Connector service.
- B. Re-index the existing object store.
- C. Remove the index and then recreate the index for an existing object store.
- D. Re-index the index area by committing the job automatically in the Index Jobs Manager.

Answer: C

15.The ICC SMTP Connector service account must have what permissions?

- A. Full access to the SMTP trigger mailbox.
- B. Full access rights to the SMTP message queue directory.
- C. Local user account with full access rights to all file locations.
- D. In a scale-out environment, administrator rights to the SMTP message queue directory on the primary node only.

Answer: B

16.Which activity is responsible for extracting text from an email attachment for full-text indexing with FileNet P8?

- A. Configuring the Text Extraction Connector.
- B. Setting up "Extract Text" task node in a task route.
- C. Setting up "Extract Metadata" task node in the task route.
- D. Setting up "EC Extract Attachments" task node in the task route.

Answer: B

17.What prerequisite must be installed on the IBM Content Collector server before you can create connections to IBM Content Manager?

- A. ICC Integrator for CM

- B. ICC CM Connection Manager
- C. IBM Information Integrator for Content
- D. IBM Content Manager Client for Windows

Answer: C

18. When you configure the Sharepoint connector in ICC which two user id formats can be used if you do not specify the domain? (Choose two.)

- A. UPN (User Principal Name)
- B. URL (Uniform Resource Locator)
- C. PNC (Principal Naming Convention)
- D. UNC (Universal Naming Convention)
- E. FHS (FileSystem Hierarchy Standard)

Answer: A,D

19. Where is the ICC Web Application logging level set?

- A. In the %IBMAFUROOT%\AFUWeb\configuration\config.ini file.
- B. In the Start parameters field of the ICC Web Application service properties.
- C. Through the ICC Web Application shortcut under the ICC Set-up Tools menu.
- D. On the Log Settings tab of the ICC Configuration Manager Web Application page.

Answer: D

20. Where would you go to determine where Content Collector logs are being written?

- A. Content Collector installation directory
- B. Content Collector log configuration utility
- C. ContentCollector Configuration Manager
- D. Content Collector Configuration Database

Answer: C