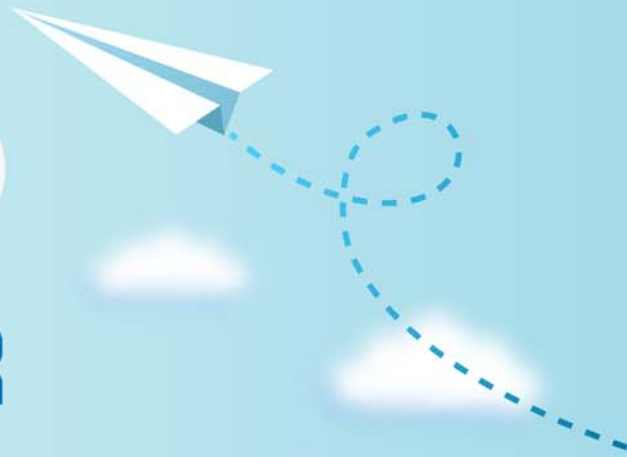


# CERTPARK



## QUESTION & ANSWER



CERTPARK.COM

Accurate Study Guides,  
High Passing Rate!  
provides update  
free of charge  
in one year!



**Exam** : **C2090-304**

**Title** : IBM InfoSphere  
QualityStage v9.1 Solution  
Developer

**Version** : DEMO

1.How does QualityStage output the correct ISO code for a record?

- A. ISO code functionality is not available.
- B. ISO code supplied by the Country rule set.
- C. ISO code supplied by the USPREP rule set.
- D. ISO code supplied by the US Address rule set.

**Answer: C**

Explanation: The ISOterritorycode is appended to the domain preprocessor abbreviation (PREP).

2.You need to create a batch delta match process for transaction records against a very large master file of existing clients.

Which QualityStage match option should be used?

- A. Transitive One-source match
- B. Two-source many-to-one match
- C. Deterministic One-source match
- D. Two-source many-to-many match

**Answer: A**

Explanation: Transitive One-source matchcan extend further than one-source-dependent because it uses all the pairs that score above the match cutoff. It's recommended if you want to account forinconsistentdata entryin fields that assist in duplicate identification.

3.How can Word Investigation reports be used to modify a rule set?

- A. Corrects spelling errors in the data field.

- B. Adds tokens to allow identification of additional duplicates.
- C. Identifies new tokens to allow additional words to be classified.
- D. Identifies matched words to be used in match designer frequency distribution.

**Answer: A**

4.Which statement about the jobs used by the Match Specification Setup Wizard is true?

- A. The jobs must be created.
- B. The jobs must be imported.
- C. The jobs exist for only One-source individual match.
- D. The jobs are created in the repository at installation time.

**Answer: A**

5.When would you use the survive technique 'Most Frequent'?

- A. When more than one target field is required.
- B. When the most frequent occurrence is required.
- C. When the most frequently populated value is required.
- D. When the most frequently populated value is required with two or more occurrences.

**Answer: D**

6.You are designing a reference match that will be run on a daily basis. Where should the reference data frequencies typically be generated?

- A. In a Server job in the same Job Sequence.

- B. In a shared container in the same job as the match.
- C. In a different job stream and part of the daily process.
- D. In a different job stream and not part of the daily process.

**Answer: B**

7.Which statement is true about creating a Match Statistics report from a One-source match?

- A. You must use the Match Statistics stage.
- B. The One-source Match Statistics link target must be ODBC.
- C. The One-source Match Statistics link target must be a sequential file.
- D. The One-source Match Statistics link target can be any QualityStage supported target.

**Answer: A**

8.Which two steps in the QualityStage Data Quality Methodology facilitates effective matching?

- A. Parsing
- B. Surviving
- C. Tokenization
- D. Data Mapping
- E. Standardization

**Answer: B,E**

9.You re-ran a job to update the standardized data. This standardized data file is used in your test environment configuration on Match Designer.

What action would you take to insure the most current standardized data file is used?

- A. No action is required.
- B. You need to open Test Environment and click [Update].
- C. You need to open Data Table Definition and click [Update].
- D. You need to click [Test All Passes] to apply changes in the standardized data.

**Answer: A**

10.If a token had the value 13D and the "D" had to be isolated in a variable named Temp, what Pattern

Action code would be used?

- A. COPY [1] Temp
- B. COPY [1](c) Temp
- C. COPY [1](-n) Temp
- D. COPY [1](-c) Temp

**Answer: A**