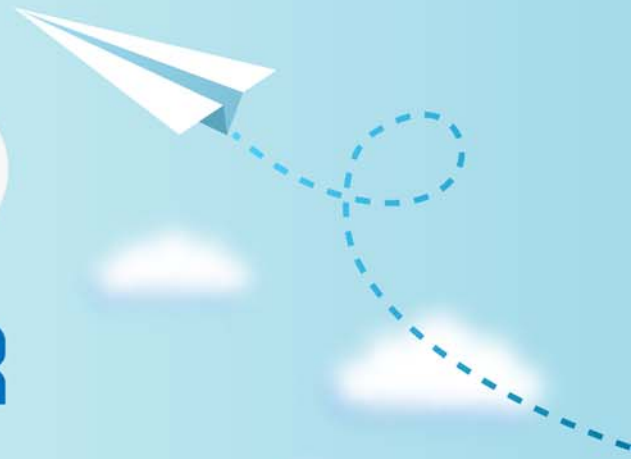


CERTPARK



QUESTION & ANSWER



CERTPARK.COM

Accurate Study Guides,
High Passing Rate!
provides update
free of charge
in one year!



<https://www.certpark.com>

Exam : **C2090-552**

Title : IBM Optim Implementation
for Distributed Systems
(2009)

Version : Demo

1.You can use the silent installer in a UNIX environment to install the Optim Server. The silent installer is NOT available for which two of the following platforms? (Choose two.)

- A. HP-UX 11i v2
- B. Red Hat Linux 3
- C. IBM AIX 5
- D. Solaris 8
- E. SUSE 10

Answer: B,D

2.When installing Optim, what is the minimum disk space needed for the database.?

- A. 50gb
- B. 50mb
- C. As required
- D. 500mb

Answer: C

3.You are planning an installation of IBM Optim. Which two configurations are supported for the Optim Server and Optim Directory? (Choose two.)

- A. DB2 database running on Ubuntu Linux
- B. DB2 or Oracle databases running on AIX
- C. Oracle or Microsoft SQL Server databases running on AIX
- D. DB2 or Informix databases running on Sun Solaris
- E. DB2 or Microsoft Access databases running on Windows XP Professional

Answer: B,D

4.Which two statements are true about Optim security roles? (Choose two.)

- A. Functional Privilege classes such as Create New Actions and Create New Definitions can be controlled using Roles.
- B. Privileges such as Archive Request and Compare Request can be controlled using Roles
- C. By default, the Access Control Domain allows access to all Optim Actions and privileges. Only denial of privileges can be assigned using roles.
- D. Default Roles may not be modified to allow or deny Functional Privilege Classes and New Action Privileges.
- E. Edit the FAD (File Access Definition) to control which roles has access to all of the files.

Answer: A,B

5.The customer has critical production systems against which Optim archive and delete processes are run. If Optim archive and delete processes are run at the wrong time, it will impact business. Which of the following will resolve the issue?

- A. Using the Optim Configuration program, initialize Optim Security and assign a Security Administrator. For each role, grant or deny the appropriate privileges.
- B. Configure object security, which will deny access to sensitive production objects.
- C. By default, the Access Control Domain allows or denies access to particular Optim functions.
- D. Configure program security to restrict access to the Optim executables.

Answer: A

6. When performing an archive process that uses a Storage Profile, which action could be performed as a result of using the storage profile?

- A. Creates a connection to the database for use by the storage management device.
- B. Creates a connection to the storage management device and copies an Archive File to a backup device.
- C. Creates a storage allocation parameter for the storage or file management system.
- D. Creates a duplicate of the existing information from the Archive Repository on the storage management device.

Answer: B

7. When installing Optim, which of the following is true?

- A. ODM/Optim Connect must be installed during the Optim Installation process.
- B. ODM/Optim Connect must be installed after Optim is successfully installed.
- C. ODM/Optim Connect can be installed either during the Optim installation, or after Optim is successfully installed.
- D. ODM/Optim Connect is not a part of the Optim Installation.

Answer: C

8. The Optim Directory is built in an Oracle Database. If the project Database is Unicode enabled, which of the following is true?

- A. The Optim Directory can be enabled as either Unicode or Non-Unicode.
- B. The Optim Directory and the DB Alias must both be initialized the same, either both as Unicode or both as Non-Unicode.
- C. The Optim Directory and the DB Alias both must be Unicode enabled.
- D. The DB Alias must be enabled as Non-Unicode.

Answer: C

9. You have installed the Optim Server on an AIX system. The system is configured with various internal and external storage options attached to the server. Where should the Optim Temporary Work folder be placed?

- A. the attached archive appliance
- B. the attached NAS device
- C. the system's internal disk drives
- D. the attached SAN device

Answer: C

10. You are installing IBM Optim into an Oracle environment. Which statement is correct about user permissions?

- A. The installation user requires the DBA role.
- B. The installation user is the only user that can run Optim.
- C. The installation user's permissions must be deleted once the installation is complete and all DB Aliases are created.

D. The installation user must have the SELECT ANY DICTIONARY role.

Answer: D

11. Which databases are directly supported on distributed platforms for Optim Test Data Management?

- A. DB2 LUW, Oracle, Microsoft SQL Server, Microsoft Access
- B. Sybase, Informix, Progress, DB2 LUW, MySQL, Microsoft SQL Server
- C. Informix, Microsoft SQL Server, Sybase, DB2 LUW, Oracle
- D. Microsoft Access, MySQL, Progress, DB2 LUW, Oracle, Sybase

Answer: C

12. Where can the Optim Directory be stored?

- A. DB2 UDB for z/OS running on mainframe platform
- B. SQL Server running on UNIX platform
- C. DB2 LUW running on Windows, UNIX or Linux platforms
- D. Microsoft Access database running on Windows platforms

Answer: C

13. Consider the following Archive file name that is defined using macros:

/home/<\$USER>/archives/<MON \$SEQ6>.AF Which filenames would be generated from this macro?

(Note: Assume that the file was created on Monday, February 2, 2009, by the person with the user ID of dev3x and the last sequential number assigned was 263.)

- A. /dev3x/Feb000263.AF
- B. /home/dev3x/archives/MON 264.af
- C. /home/dev3x/archives/Feb264.af
- D. /home/dev3x/archives/MON000264.AF

Answer: D

14. You must have a password to review and change Product Options. What is the default password?

- A. "null"
- B. "softtech"
- C. "optim"
- D. "ibm"

Answer: C

15. Optim objects are saved in the Optim Directory. Which two statements are true about saving Optim objects? (Choose two.)

- A. Optim objects like Column Maps, Table Maps and Access Definitions are saved with two-part names.
- B. Only Optim relationships are saved in the Optim Directory.
- C. If a Column Map is noted as local, with no name, it is used only once and then discarded.
- D. An Archive Request cannot be saved in the Optim Directory.
- E. There may be more than one Optim object with the same name as long as they are different types of objects.

Answer: A,E

16. Given the following command-line export command: PROCMD /EXPORT TYPE=EX NAME=%.%
Which required parameter is missing from this syntax?

- A. The name of the export file is missing.
- B. The name of the report file is missing.
- C. The name of the Optim Directory is missing.
- D. The name of the parameter file is missing.

Answer: A

17. Click the Exhibit button.

Options		Child	Parent Table	Child Table
(1)	(2)	Limit		
<input checked="" type="checkbox"/>	<input type="checkbox"/>		CUSTOMERS	ORDERS
<input checked="" type="checkbox"/>	<input type="checkbox"/>		ITEMS	DETAILS
<input checked="" type="checkbox"/>	<input type="checkbox"/>		ORDERS	DETAILS
<input checked="" type="checkbox"/>	<input type="checkbox"/>		SALES	STATE_LOOKUP
<input checked="" type="checkbox"/>	<input type="checkbox"/>		SALES	CUSTOMERS

EXTRACT STEPS for TEST.CERT

Step 1:
Extract Rows from Start Table ORAOPTIM.SAMPLE.SALES. No Point and Shoot List, Selection Criteria or Statistical Controls used, therefore Start Table does not need to be revisited, even if part of a Cycle.

Step 2:
Extract Rows from ORAOPTIM.SAMPLE.STATE_LOOKUP which are Children of Rows Previously Extracted from ORAOPTIM.SAMPLE.SALES in Step 1 using Relationship CERTTEST.

Step 3:
Extract Rows from ORAOPTIM.SAMPLE.CUSTOMERS which are Children of Rows Previously Extracted from ORAOPTIM.SAMPLE.SALES in Step 1 using Relationship RSC.

Step 4:
Extract Rows from ORAOPTIM.SAMPLE.ORDERS which are Children of Rows Previously Extracted from ORAOPTIM.SAMPLE.CUSTOMERS in Step 3 using Relationship RCO.

Untraversed Table(s):
ORAOPTIM.SAMPLE.ITEMS

Reference Table(s):
ORAOPTIM.SAMPLE.DETAILS
All Rows

Untraversed Relationship(s):
CERTTEST

Given the information from the Relationships tab of an Access Definition, and the associated Show Steps

report as shown in the exhibit, what is the reason that the ITEM 552.S table is listed as UNTRAVERSED?

- A. Options (2) must be enabled for the relationship between DETAILS and ITEM 552.S.
- B. The DETAILS table is designated as a Reference Table so all relationships are ignored for this table.
- C. Options (1) must be disabled for the relationship between DETAILS and ITEM 552.S.
- D. No relationship exists between ITEM 552.S and any other table.

Answer: B

18. When you specify the default minimum retention period for protecting Archive Files on a managed storage system from deletion, when will the files be deleted?

- A. When the expiration date on the Archive File has been reached, Optim issues a request to the managed storage system to delete the file.
- B. After the minimum retention period expires, the file can be deleted from Optim.
- C. After the minimum retention period expires, the file can be marked deleted by the managed storage system.
- D. After the retention period is reached, the file will be automatically deleted by Optim.

Answer: C

19. What will cause a failure during an Archive Process?

- A. An Optim Connect or ODBC definition does not exist for the Archive Collection.
- B. An Archive File Collection already contains more than 12 Archive Files.
- C. An invalid Archive File is automatically added to an Archive File Collection.
- D. An Archive Process will always complete unless the ignore Errors?check box is selected

Answer: C

20. You can specify the default minimum retention period for protecting Archive Files on Centera from deletion. How is the minimum retention period calculated?

- A. from the time Centera copies the file
- B. from the time the Archive Process copies the file to Centera
- C. from the time that the Archive Process copies the file to the local file system
- D. from the time Centera copies the file from the local file system

Answer: B