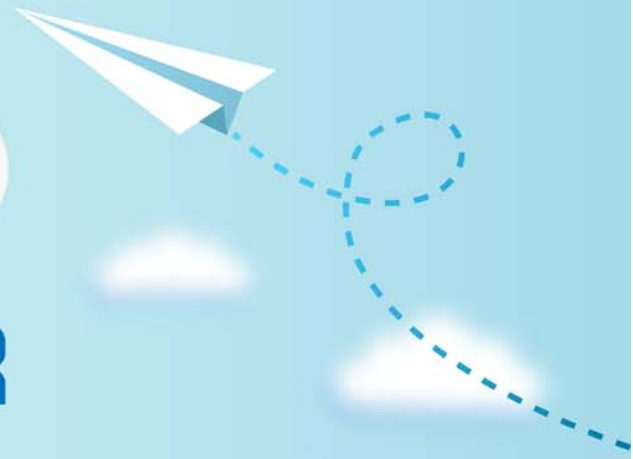


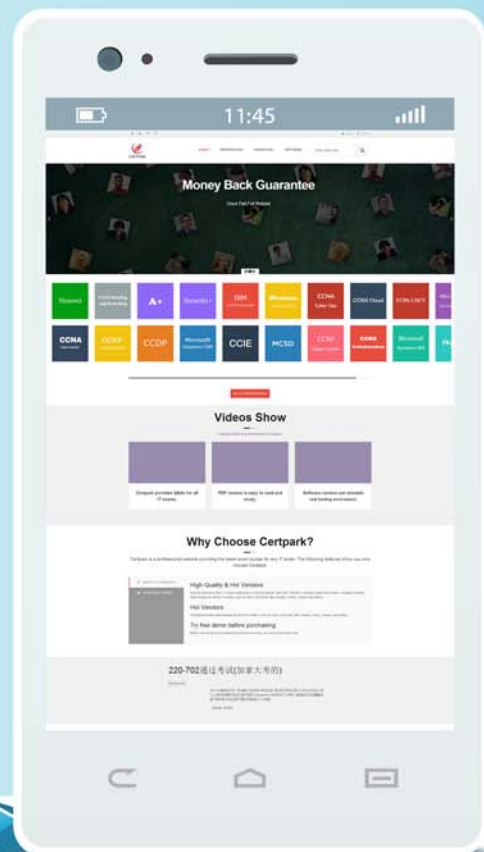
# CERTPARK

## QUESTION & ANSWER



CERTPARK.COM

Accurate Study Guides,  
High Passing Rate!  
provides update  
free of charge  
in one year!



<https://www.certpark.com>

**Exam : C2090-622**

**Title : IBM Cognos 10 BI  
Administrator**

**Version : DEMO**

1.After the installation of IBM Cognos BI, what must be done to ensure that only select users have unrestricted access to Public Folders in IBM Cognos Connection?

- A. Add the Anonymous user to the Directory Administrators role.
- B. Remove the Everyone group from the Server Administrators role.
- C. Remove the Everyone group from the System Administrators role.
- D. Remove the All Authenticated Users group from the Directory Administrators role.

**Answer: C**

2.A user wants to be able to view the contents of a container entry, such as a package or a folder, and view general properties of the container itself without having full access to the content. Which permission does the administrator assign to the user.?

- A. Read
- B. Write
- C. Traverse
- D. Set Policy

**Answer: C**

3.To be able to access and modify any object within the portal, regardless of any security policies set for the object, the administrator must be a member of which built-in role?

- A. Server Administrators
- B. Report Administrators
- C. System Administrators
- D. Directory Administrators

**Answer: C**

4.What permission is needed to view and change the permissions of a IBM Cognos BI object?

- A. Read
- B. Set Policy
- C. Traverse
- D. Execute

**Answer: B**

5.To administer the contents of namespaces, the administrator must be a member of which predefined role?

- A. Report Administrators
- B. Server Administrators
- C. Directory Administrators
- D. System Administrators

**Answer: C**