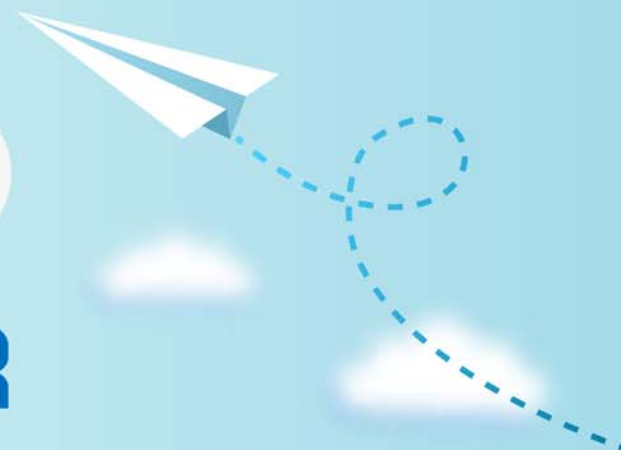


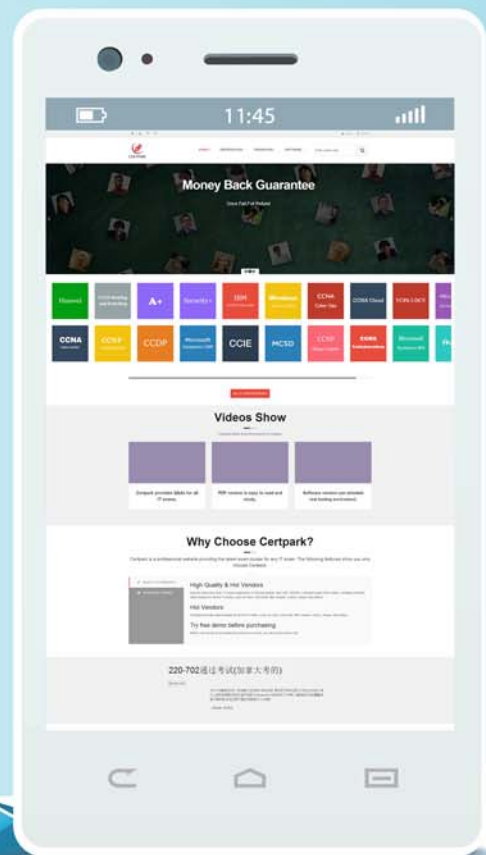
# CERTPARK

QUESTION & ANSWER



CERTPARK.COM

Accurate Study Guides,  
High Passing Rate!  
provides update  
free of charge  
in one year!



<https://www.certpark.com>

**Exam** : **C2090-642**

**Title** : IBM Cognos 10 BI  
Scorecard Developer

**Version** : DEMO

1.An administrator attempted to transfer metric values from the staging area into the metric store. However, not all of the metrics were populated with expected values. In which table can the administrator locate the rejected rows for review, correction, and reloading?

- A. KPI\_VALUE\_STAGE\_REJECTS
- B. OBJECT\_STAGE\_REJECTS
- C. METRIC\_TYPE\_STAGE\_REJECTS
- D. OBJECT\_NOTE\_STAGE\_REJECTS

**Answer: A**

2.How would the scorecard developer delete the Marketing scorecard and move its children under the Corporate scorecard.?



- A. In the user interface, drag the children to the Corporate scorecard and then delete the Marketing scorecard.
- B. In the user interface, mark the Marketing scorecard for deletion, drag the Corporate scorecard and run re-calculate metrics derived values.
- C. In the .cmm file, re-assign the parent to the children scorecard and then mark the Marketing scorecard for deletion.
- D. In the .cmdfile. re-assign the parent to the children scorecard and then mark the Marketing scorecard for deletion.

**Answer: C**

3.A tab-delimited file with a cmm extension contains what type of objects?

- A. Metrics
- B. Metric types
- C. Metric values
- D. Import sources

**Answer: B**

4.Which statement is true about staging tables?

- A. Staging tables map to Data ManagerTables

- B. Staging tables map to tab-delimited files
- C. Staging tables map to tables in the data warehouse
- D. Staging tables map to tables in the content store

**Answer: B**

5. What must be done to load the data successfully into Metric Studio using structured query language (SQL) scripts?

- A. Perform the task Recalculate metric store derived values after each script execution.
- B. Perform the task Import data from files into staging area after each script execution
- C. Structure the query language to map data from the relational database to the content store.
- D. Structure the query language to map data from the relational database to the staging tables

**Answer: D**