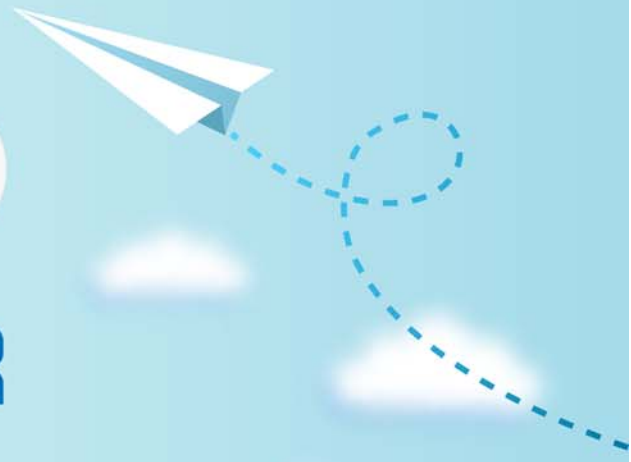


# CERTPARK

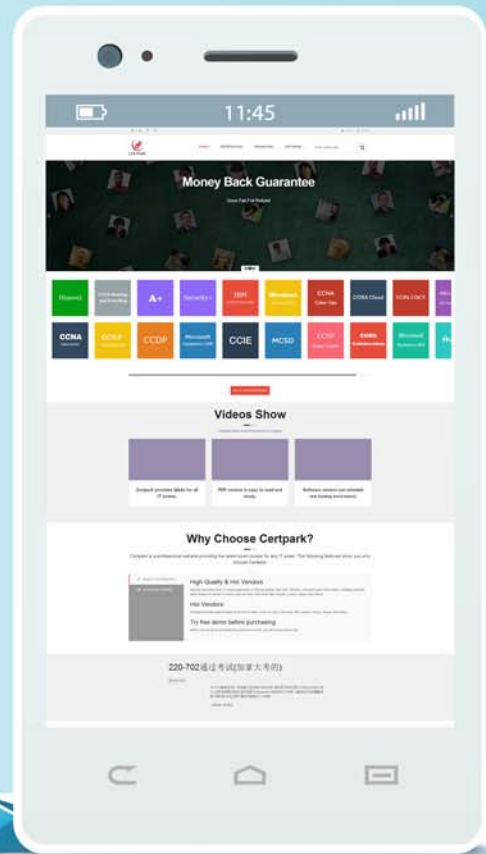


## QUESTION & ANSWER



CERTPARK.COM

Accurate Study Guides,  
High Passing Rate!  
provides update  
free of charge  
in one year!



<https://www.certpark.com>

**Exam** : **C9520-924**

**Title** : IBM WebSphere Portal 8.0  
Migration and Support

**Version** : DEMO

1. Which best describes how you prevent linking to unsafe servers when creating links in an IBM Web Content Manager rich text element to content in a remote enterprise content management server?
- A. You need to specify a list of allowed domains that your portal can access using the portal's AJAX proxy component.
  - B. You can use the global Ajax proxy configuration to customize the outgoing HTTP traffic, such as applying specific HTTP timeout values or configuring an outbound HTTP proxy server.
  - C. Map the URL patterns for the content management server to the federated\_documents\_policy dynamic policy using the WP ConfigService configuration service using the IBM WebSphere Integrated Solutions console.
  - D. All of the above.

**Answer: D**

2. Tony wants to migrate the web content data from IBM WebSphere Portal 7.0 to WebSphere Portal 8.0.

Which of the following options does he need to do?

- A. He needs to run the wcmigrate all-data task to migrate the IBM Web Content Manager data.
- B. He needs to run the WPMigrate migrate-wcm task to migrate the Web Content Manager data.
- C. He needs to make a copy of WebSphere Portal 7.0 JCR repository and run the ConfigEngine connect-database task to connect to the copy of the JCR repository.
- D. He needs to make a copy of WebSphere Portal 7.0 JCR repository and run a ConfigEngine validate-database task to connect to the copy of the JCR repository.

**Answer: C**

3. GreenCo has set up several web content libraries for IBM Web Content Manager to separate content. Tony is in charge of designing graphic images for all portals at GreenCo. He has set up a library to store these images. Jackie runs the Marketing portal for GreenCo and uses the images that Tony has created. Jackie sets up her library to syndicate from the authoring server to the Marketing portal but receives syndication errors, what could be the cause of the errors?

- A. Jackie needs to set up two-way syndication with the Marketing portal.
- B. Tony needs to copy his Web Content Manager library to the Marketing portal.
- C. Both Tony library and Jackie library need to be included in the syndication and a syndication relationship should be created.
- D. Tony needs to set up a new JCR database on the Marketing portal to store his images.

**Answer: C**

4. John is building a website based on IBM WebSphere Portal that renders multiple portlets in the portal pages, but he is required to show only specific portlets that user had depending on the groups they belong in the LDAP.

How can he hide portlets to which logged in users do not have access?

- A. John can use the Personalization features in the WebSphere Portal. He can hide the portlets by creating a "Visibility Rule" to hide or display portlet based on group membership.
- B. John can use the Personalization features in the WebSphere Portal. He can create a "Select Action Rule" rule and display select portlets in the page.
- C. John can use the Personalization features in the WebSphere Portal. He can create a "Display Rule"

rule and display select portlets in the page.

D. No, Out of box Personalization features does not allow to hide specific portlets in the page. Only the visibility of page can be controlled using rules.

**Answer:** A

5. Users of the IBM Web Content Manager authoring system have just reported timeout errors when saving large items.

What can be done to overcome these errors?

A. Increase the total transaction lifetime timeout setting using the IBM WebSphere Integrated Solutions console

B. Increase the session timeout using the IBM WebSphere Integrated Solutions console.

C. Increase the resource.maxUploadSize property in WCMConfigService using the IBM WebSphere Integrated Solutions console.

D. Request users not to create items that are large.

**Answer:** A