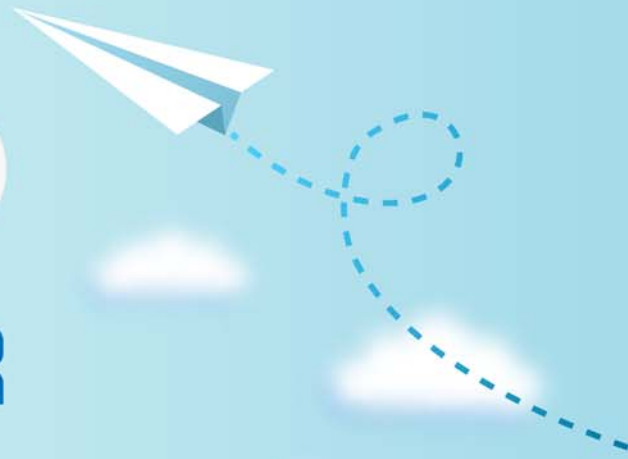


CERTPARK

QUESTION & ANSWER



CERTPARK.COM

Accurate Study Guides,
High Passing Rate!
provides update
free of charge
in one year!



Exam : **C9530-376**

Title : IBM WebSphere MQ V7.0,
Solution Design

Version : DEMO

1. Which new feature in WebSphere MQ V7.0 needs to be taken into account when WebSphere MQ solutions are deployed into mixed z/OS and distributed environments?

- A. Queue sharing groups are now available between z/OS and other platforms; however, at least one queue manager in the group must still be hosted on z/OS.
- B. The use of WebSphere MQ Explorer for the administration of z/OS based queue managers no longer requires a license for the Client Attachment Feature (CAF) for a limited number of users.
- C. WebSphere MQ Client applications from distributed environments can now directly connect to z/OS queue managers; the Client Attachment Feature (CAF) is no longer required.
- D. A WebSphere MQ Client implementation on z/OS is now available, so that full WebSphere MQ no longer needs to be installed on all z/OS systems that want to participate in message queuing.

Answer: B

2. The topic object for the topic x/y is defined with WILDCARD=PASSTHRU. Which of the following is the most appropriate use of a wildcard for this topic?

- A. Subscribe to topic x/y/#
- B. Publish the information to topic x/y/#
- C. Publish the information to topic x/y/+
- D. It is not possible to use a wildcard with this topic

Answer: A

3. An application creates documents in PDF format, which are subsequently transmitted via WebSphere MQ to a number of other servers in the network. Each server runs its own queue manager. The documents received by some servers are consistently corrupted, whereas on other servers the documents are intact. Other message traffic seems unaffected. What is the most likely source of this problem?

- A. The environment variable MQCCSID specifies an incorrect value on the affected servers.
- B. Incompatible message compression parameters are configured on the sending and receiving channel agents.
- C. The network connection to the affected servers is unreliable and a message retry exit was not specified on the sending channel agent.

D. The affected servers run different CCSIDs from the servers creating the documents and the message descriptor specifies MQMD.Format as QSTR? causing message conversion.?QSTR? causing message conversion.

Answer: D

4. An application is being designed which will send updates about customers to different applications.

Given the sensitive nature of the data, the sending application needs to manage which applications receive the data. Which of the following is the best solution to ensure this?

A. Apply the publish-subscribe paradigm (one-to-many).

B. Each application should have its own queue on which it will listen for updates

C. All applications should listen on the same queue and after processing the message should update its header so the last application process can remove it from the queue

D. All receiving applications should listen on the same queue and the sending application should send separate copies of the message with attributes which allow the receiving applications to search the queue for their own copies.

Answer: B

5. A solution designer is considering different API options for a new WebSphere MQ application. Only IBM supported WebSphere MQ programming options should be considered. Which one of the following is not supported by IBM?

A. XMS

B. JMS

C. Perl

D. WebSphere MQ classes for .NET

Answer: C