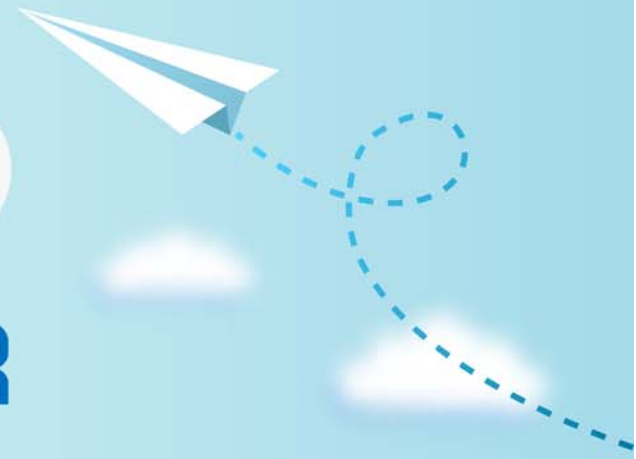


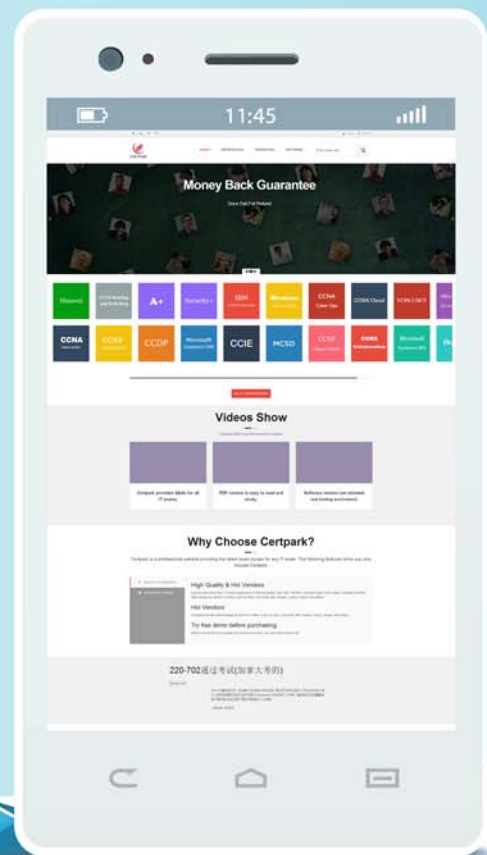
CERTPARK

QUESTION & ANSWER



CERTPARK.COM

Accurate Study Guides,
High Passing Rate!
provides update
free of charge
in one year!



Exam : **C9560-519**

Title : IBM Tivoli Netcool/OMNIBus
V8.1 Implementation

Version : DEMO

1.A company has 1,000 Cisco switches in their environment that send approximately 5,000 traps each to the Netcool system in a 24 hour period. In addition to this, they have 5,000 servers and workstations; each sending approximately 100 syslog messages to IBM Tivoli Netcool/OMNIBus in the same time period. Based on the scenario above, what is the calculated event rate per 24 hours?

- A. 5,500,000 events
- B. 2t500,000 events
- C. 1,000,000 events
- D. 6,000,000 events

Answer: D

2.What are two configurations allowed in the Console Preferences Profile?

- A. Refresh rates of the pages included
- B. Pages included in the profile
- C. Maximum events shown in the Event List
- D. Roles with access to the profile
- E. Console view options

Answer: B,D

3.What are three supported databases for the JDBC gateway?

- A. PostgreSQL
- B. DB2
- C. Derby
- D. Oracle
- E. ISQLLite
- F. Microsoft SQL Server

Answer: B,D,F

Explanation:

https://www.ibm.com/support/knowledgecenter/SSSHTQ/omnibus/gateways/jdbcgw/wip/reference/jdbcgw_db_support.html

4.A new employee has the task of assigning roles to the groups who will be using the Web GUI. Which role does the employee need to operate his duties?

- A. configurator
- B. operator
- C. ncw__admin
- D. iscadmins

Answer: D

5.What are two roles required to view and edit Gauges pages?

- A. ncw_dashboard_editor
- B. ncw_gauges_viewer
- C. netcool_rw
- D. ncw_editor
- E. new user

Answer: B,D