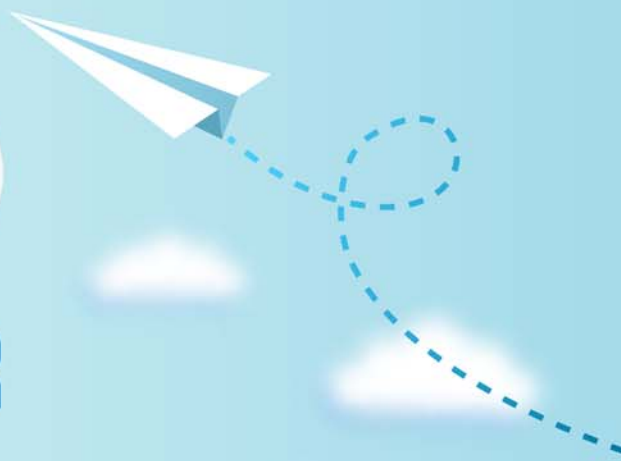


CERTPARK



QUESTION & ANSWER



CERTPARK.COM

Accurate Study Guides,
High Passing Rate!
provides update
free of charge
in one year!



<https://www.certpark.com>

Exam : CAU302

Title : CyberArk Defender + Sentry

Version : DEMO

1.To support a fault tolerant and high-availability architecture, the Password Vault Web Access (PVWA) servers need to be configured to communicate with the Primary Vault and Satellite Vaults.

What file needs to be changed on the PVWA to enable this setup?

- A. Vault.ini
- B. dbparm.ini
- C. pvwa.ini
- D. Satellite.ini

Answer: A

2.Auto-Detection can be configured to leverage LDAP/S.

- A. TRUE
- B. FALSE

Answer: A

3.Vault admins must manually add the auditors group to newly created safes so auditors will have sufficient access to run reports.

- A. TRUE
- B. FALSE

Answer: B

4.When a group is granted the 'Authorize Account Requests' permission on a safe Dual Control requests must be approved by:

- A. Any one person from that group
- B. Every person from that group
- C. The number of persons specified by the Master Policy
- D. That access cannot be granted to groups

Answer: C

5.When creating an onboarding rule, it will be executed upon.

- A. All accounts in the pending accounts list.
- B. Any future accounts discovered by a discovery process.
- C. All accounts in the pending accounts list and any future accounts discovered by a discovery process.

Answer: B

Explanation:

Reference:

<https://docs.cyberark.com/Product-Doc/OnlineHelp/PAS/Latest/en/Content/PASIMP/Managing-Discovery-Processes.htm>