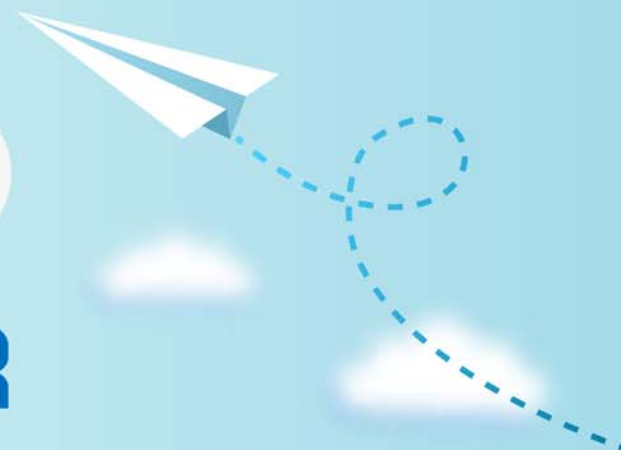


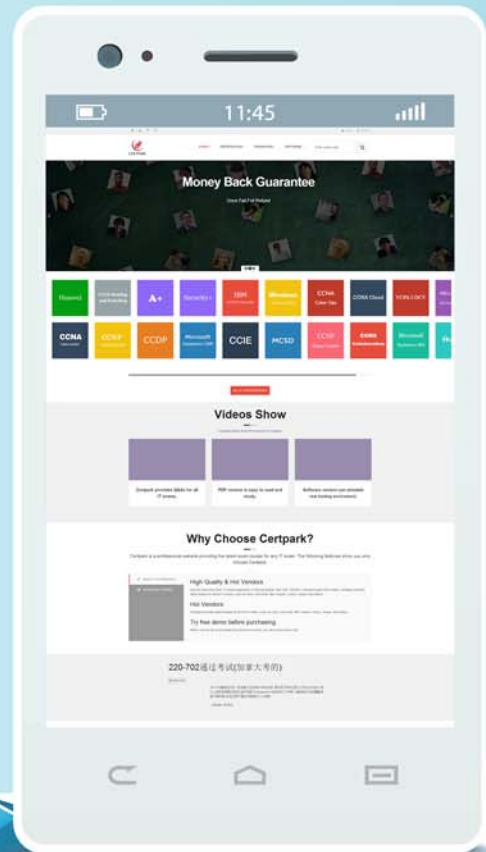
# CERTPARK

QUESTION & ANSWER



CERTPARK.COM

Accurate Study Guides,  
High Passing Rate!  
provides update  
free of charge  
in one year!



**Exam : CPUX-F**

**Title :** UXQB Certified Professional  
for Usability and User  
Experience - Foundation  
Level

**Version : DEMO**

1.Which one of the following statements best describes the purpose of a focus group?

- A. To gather focused information from a group of users in a usability test session
- B. To gather contextual information relating to user needs without interfering with users' work
- C. To collect contextual information relating to user needs by talking to users with particular focus on a user group
- D. To gather ideas for personas and scenarios
- E. To discuss a set of questions on specific topics
- F. To evaluate an interactive system

**Answer:** E

**Explanation:**

Focus group

A focused discussion where a moderator leads a group of participants through a set of questions on specific topics.

Note: 1.

Do not use focus groups for usability evaluation. Focus groups are about attitude and opinion. In comparison, usability tests are about observing actual user behaviour.

2."The level of understanding and implementation of a systematic human-centred design process within an organisation" is:

- A. LeanUX
- B. Usability Maturity
- C. Humancentred design
- D. Effectiveness
- E. Satisfaction
- F. Accessibility

**Answer:** B

3.Which one of the following statements best describes the term, "mental model"?

- A. A description of a fictitious but realistic user and what they intend to do when using an interactive system
- B. A description of the subtasks within a task that have to be carried out in order to reach the user's goals
- C. A person's thought process about how an interactive system works
- D. A low-cost, simple model of a design or concept used to gather feedback from users and other stakeholders during the early stages of design
- E. Information to help a user to interact with an interactive system
- F. A data model of how usability test participants felt about an interactive system following a usability test session

**Answer:** C

4.CORRECT TEXT

Fill in the blank:

The context of use description is the basis for identifying \_\_\_\_\_ and tracing them back to their \_\_\_\_\_.

**Answer:** user needs, source

5.A colleague is planning interviews with users of a restaurant review system. Among other questions, their interview checklist includes the question

How do you choose a restaurant?

Which two of the following terms best characterise this interview question?

- A. Closed
- B. Formative
- C. Leading
- D. Neutral
- E. Open
- F. Summative

**Answer:** D,E