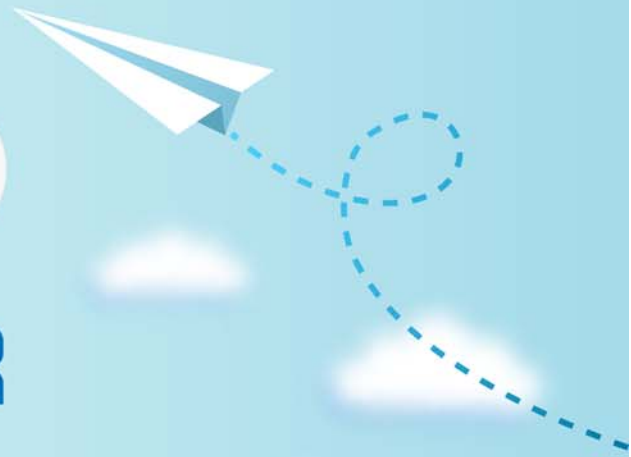


CERTPARK

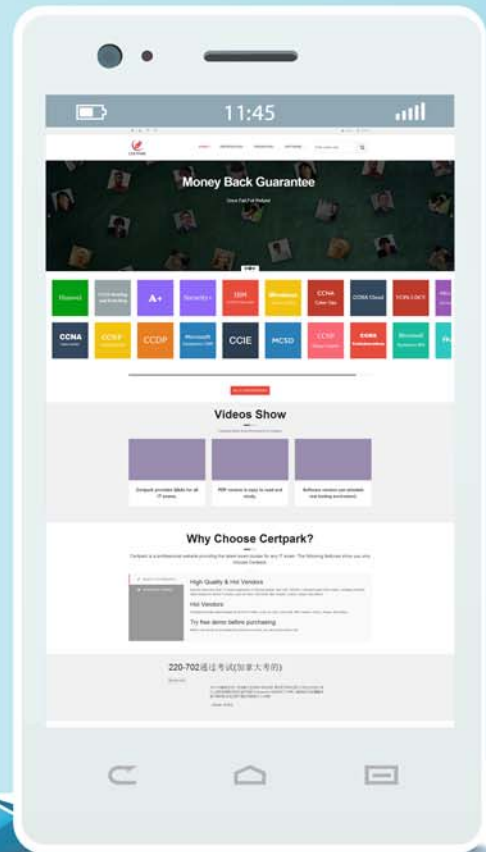


QUESTION & ANSWER



CERTPARK.COM

Accurate Study Guides,
High Passing Rate!
provides update
free of charge
in one year!



<https://www.certpark.com>

Exam : **CWS-100**

Title : **Certified Wireless Specialist**

Version : **DEMO**

1.If created correctly, what document would define the available infrastructure services on an existing wired network?

- A. Security Policy
- B. Request for Proposal (RFP)
- C. Bill of Materials (BoM)
- D. Network Diagram

Answer: D

2.What 802.11 fast roaming solution allows a client to authenticate to a different AP than that to which it is connected through the AP to which it is connected?

- A. Role-Based Access Control (RBAC)
- B. Preauthentication
- C. Captive Portal
- D. Virtual Private Network (VPN)

Answer: B

3.An organization wishes to ensure that a fairly even distribution of clients is spread across the installed APs.

What common vendor feature should be implemented to allow for this?

- A. Per-User Preshared Key (PPSK)
- B. Adaptive Radio Management (ARM)
- C. Load balancing
- D. Band steering

Answer: B

4.For what is the S1G (Sub-1 GHz) PHY (Physical Layer) most likely to be used?

- A. Tablets
- B. IoT (Internet of Things)
- C. Laptops
- D. Desktops

Answer: B

5.Why must a cloud-managed AP have access to the Internet for initial setup?

- A. Because the users connecting to the AP will demand Internet access
- B. Because the AP uses the Internet to calibrate its antennas
- C. Because the AP uses the Internet to access the cloud service
- D. Because the AP uses the Internet to set its password

Answer: C