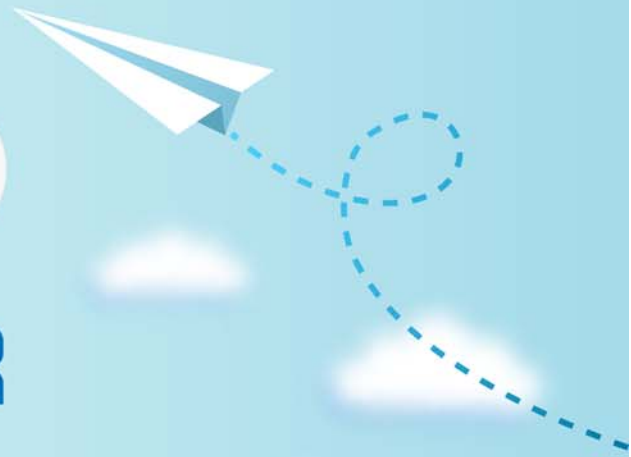


CERTPARK

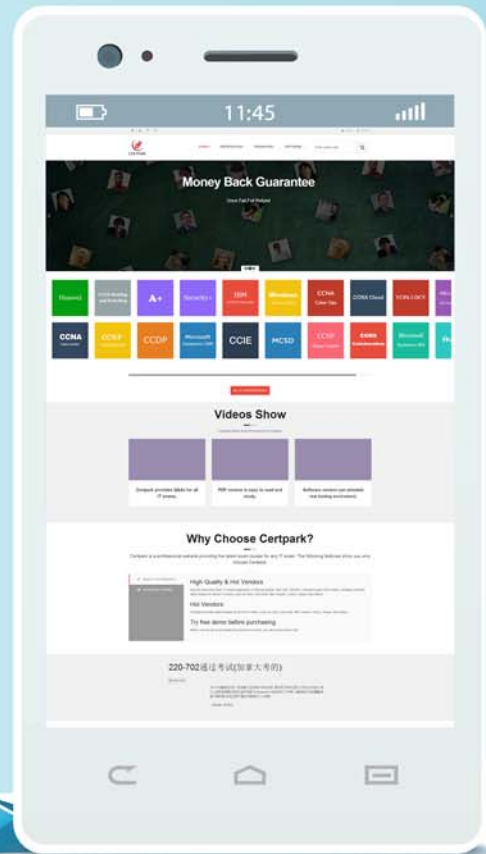


QUESTION & ANSWER



CERTPARK.COM

Accurate Study Guides,
High Passing Rate!
provides update
free of charge
in one year!



<https://www.certpark.com>

Exam : **CWSP-207**

Title : **CWNP Wireless Security
Professional (CWSP)**

Version : **DEMO**

1.What are of some of the common security capabilities often integrated within in access points deployed in a distributed WLAN architecture?

- A. Captive web portal
- B. Firewall
- C. Integrated RADIUS
- D. WIPS
- E. All of the above

Answer: E

2.In what deployment scenarios would it be desirable to enable peer-to-peer traffic blocking?

- A. In home networks in which file and printer sharing is enabled
- B. At public hot-spots in which many clients use diverse applications
- C. In corporate Voice over Wi-Fi networks with push-to-talk multicast capabilities
- D. In university environments using multicast video training sourced from professor's laptops

Answer: B

3.What are some of the purposes of the 4-Way Handshake? (Choose all that apply.)

- A. Transfer the GTK to the supplicant.
- B. Derive a PTK from the PMK.
- C. Transfer the GMK to the supplicant.
- D. Confirm cipher suites.

Answer: ABD

4.What kind of remote actions can an MDM administrator send to the mobile device over the Internet?

- A. Configuration changes
- B. Restrictions changes
- C. Locking the device
- D. Wiping the device
- E. Application changes
- F. All of the above

Answer: F

5.Given: You must implement 7 APs for a branch office location in your organization. All APs will be autonomous and provide the same two SSIDs (CORP1879 and Guest).

Because each AP is managed directly through a web-based interface, what must be changed on every AP before enabling the WLANs to ensure proper staging procedures are followed?

- A. Fragmentation threshold
- B. Administrative password
- C. Output power
- D. Cell radius

Answer: B