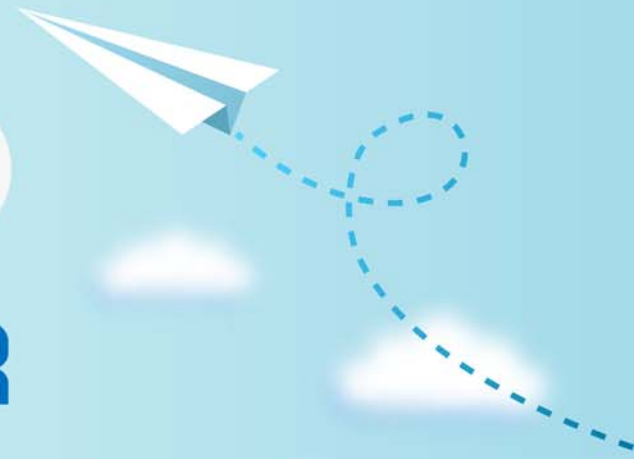


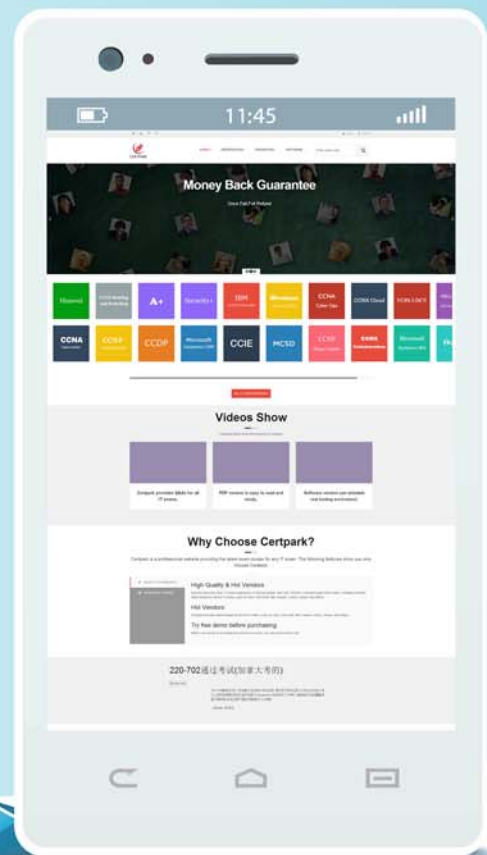
CERTPARK

QUESTION & ANSWER



CERTPARK.COM

Accurate Study Guides,
High Passing Rate!
provides update
free of charge
in one year!



Exam : **CWT-100**

Title : Certified Wireless
Technician

Version : DEMO

1. In what way are 802.11 channels defined?

- A. By a high frequency and channel width
- B. By channel width alone
- C. By a center frequency and channel width
- D. By a low frequency and channel width

Answer: B

2. What can occur when two copies of a signal wave arrive at the receiver at the same time, but 180 degrees out of phase with each other?

- A. Increased signal amplitude
- B. Bits may be added to the total count
- C. Increased signal strength
- D. Signal nulling or cancellation

Answer: D

3. What is defined as the bending of an RF wave as it passes through a medium?

Select one:

- A. Reflection
- B. Refraction
- C. Absorption
- D. Scattering

Answer: B

4. What metric is most commonly used at the receiver to report the signal strength?

Select one:

- A. dBm
- B. Watt
- C. Milliwatt
- D. Nanowatt

Answer: A

5. At what point is RF power typically stipulated in milliwatts?

- A. At the transmitter
- B. Fifty feet from the transmitter
- C. At the receiver
- D. One hundred feet from the transmitter

Answer: A