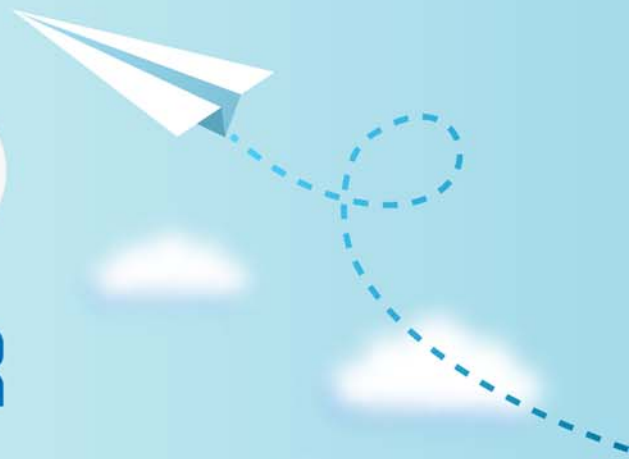


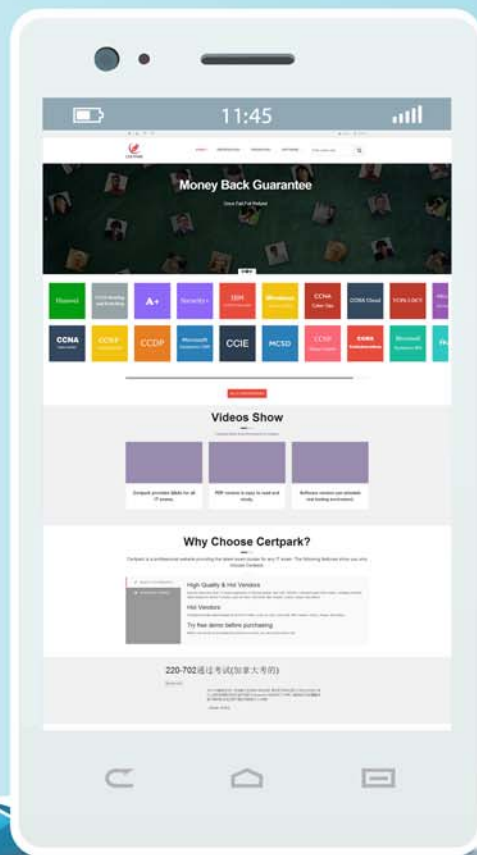
CERTPARK

QUESTION & ANSWER



CERTPARK.COM

Accurate Study Guides,
High Passing Rate!
provides update
free of charge
in one year!



<https://www.certpark.com>

Exam : **C_BOWI_43**

Title : SAP Certified Application
Associate - SAP
BusinessObjects Web
Intelligence 4.3

Version : DEMO

1.Which three options are default page number cells? There are 3 correct answers to this question.

- A. Page Number
- B. Total Number of Pages
- C. Page Number / Total Pages
- D. Total Number of Pages in Section

Answer: A,B,C

2.You insert the function CurrentDate() into a cell.

To clarify the date you add a string so that the formula is now:

= "Sales Report from "+CurrentDate()

Which formatting capability is disabled for the cell?

- A. Format cell
- B. Hide cell
- C. Align text
- D. Format number

Answer: D

3.In the query panel, you modify the script and no errors occur. You remove an object and add a different object to the Result Object pane.

What happens to the script?

- A. The script includes both the manual change and the new result objects.
- B. The script remains unchanged because the script was changed manually.
- C. The script fails to parse.
- D. The script is regenerated because the result object list is changed.

Answer: D

4.How can you see general report information such as the document author and the document creation date?

- A. Select the Query Properties button.
- B. Open the Query panel.
- C. Insert the pre-defined cell Query Summary in the report.
- D. Open the Document Summary panel.

Answer: D

5.In what application mode can you freeze column headers?

- A. Data
- B. Design, With Data
- C. Reading
- D. Design, Structure Only

Answer: C