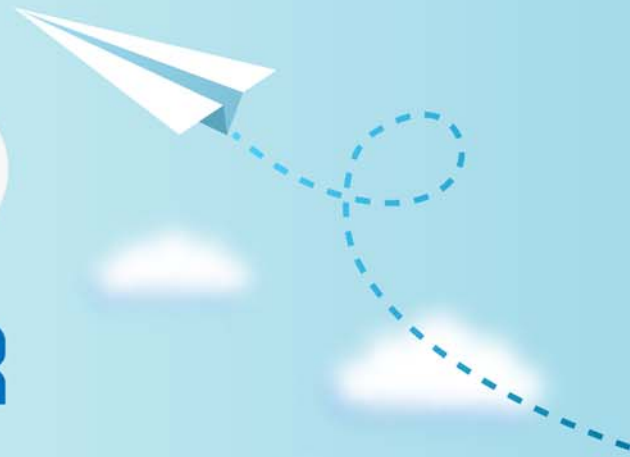


CERTPARK



QUESTION & ANSWER



CERTPARK.COM

Accurate Study Guides,
High Passing Rate!
provides update
free of charge
in one year!



<https://www.certpark.com>

Exam : **C_C4C50_2015**

Title : SAP Certified Integration
Associate - SAP Cloud for
Customer

Version : Demo

1.Which of the following is passed as parameter to the Mash-up in Sales and Cloud for Service?

- A. CRM Business Partner ID on account header
- B. ERP Customer ID or CRM Customer ID on account header
- C. CRM integrate to only SAP System
- D. HTTP mashup to show dashboard with BI/BW information consolidated for a specific account.

Answer: B

2.SAP's prepackaged integration content for SAP Cloud for Customer and SAP ERP includes synchronous and asynchronous interfaces.

Which of the following statements are true about asynchronous interfaces?

There are 2 correct answers to this question.

- A. There is no immediate response from the target system
- B. The target system doesn't need up when you trigger the message in the source system
- C. There is immediate response from the target system
- D. SAP Cloud for target has a rich set of API's that are secure and easy to consume

Answer: A,B

3.For Monitoring in Middleware (SAP HCI Eclipse), you have to perform which of the following?

There are 2 correct answers to this question.

- A. Advanced Filter criteria to select message based on direction, timestamp, Service Interface
- B. Go to the Message Monitoring view in the SAP HCI Eclipse for monitoring overview
- C. View incoming/outgoing XML payload indirectly
- D. View tail log for detailed error messages

Answer: B,D

4.Which of the following is not a step of SAP Web Dispatcher as SSL Server?

- A. Import the certificates into Server PSE
- B. Import the Root CA
- C. Send Certificate Request to CA - and get the Certificate Response signed by CA
- D. into Client Trust List
- E. Create Certificate Request out of Server PSE

Answer: A

5.You can monitor messages across which of the following?

There are 2 correct answers to this question.

- A. SAP onpremise
- B. SAP on real time
- C. SAP middleware (PI/HCI)
- D. SAP ERP for sales

Answer: A,C