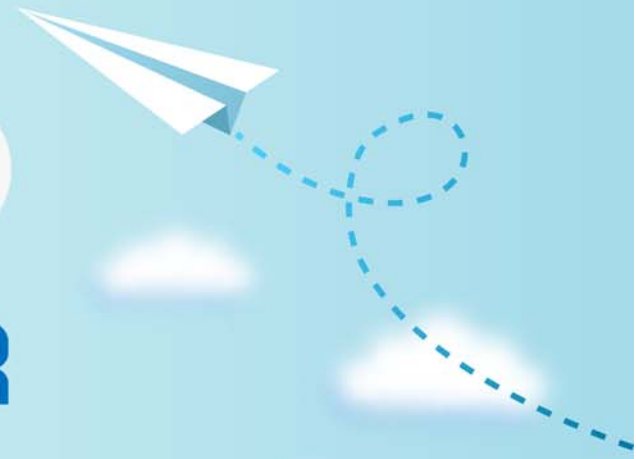


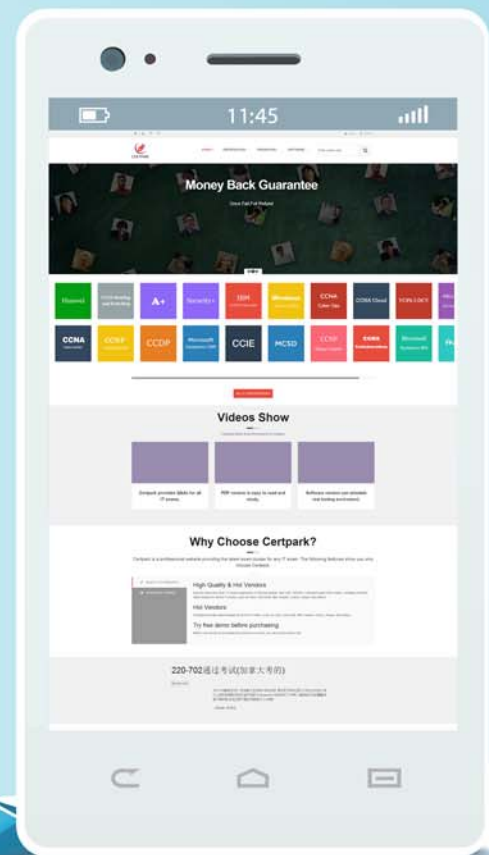
# CERTPARK

## QUESTION & ANSWER



CERTPARK.COM

Accurate Study Guides,  
High Passing Rate!  
provides update  
free of charge  
in one year!



**Exam** : **C\_GRCAC\_12**

**Title** : SAP Certified Application  
Associate - SAP Access  
Control 12.0

**Version** : DEMO

1.Which of the following logs can be collected for an Emergency Access Management session? Note:  
There are 3 correct answers to this question.

- A. Audit log
- B. System log
- C. Change log
- D. GRC Audit log
- E. Application log

**Answer:** A,B,C

2.For which of the following objects can you create an access request? Note: There are 3 correct answers to this question.

- A. User
- B. Job
- C. Division
- D. Department
- E. Organizational Unit

**Answer:** A,B,E

3.You want to use the User Analysis Dashboard to evaluate Segregation of Duties violations after your most recent batch risk analysis has completed. However, when reviewing the data you realize that the dashboard does not display all of your current users.

What do you need do to correct the problem?

- A. Execute the Repository Object Sync and then re-execute the user level batch risk analysis.
- B. Execute the Authorization Synch and then re-execute the user level batch risk analysis.
- C. Execute the Action Usage Sync followed by the Role Usage Sync and then re-execute the user level batch risk analysis.
- D. Execute the user level batch risk analysis again and remove any exclude objects.

**Answer:** A

4.Which of the following reviewer options does SoD Review support?

- A. Manager and Role Owner
- B. Manager or Role Owner
- C. Manager and Risk Owner
- D. Manager or Risk Owner

**Answer:** B

5.How can you make sure that a risk analysis is performed when you use access request management?

Note: There are 2 correct answers to this question

- A. Set Enable Offline Risk Analysis parameter to Yes
- B. Configure the MSMP workflow stage to require a risk analysis
- C. Configure the MSMP workflow path to require a risk analysis
- D. Set the Enable Risk Analysis Form on Submission parameter to Yes

**Answer:** B,D